



Title Plan - LT 601500

Survey Number LT 601500
Surveyor Reference 38021 Stage 9A
Surveyor Christopher Paul Hopper
Survey Firm Davis Ogilvie & Partners Ltd (Christchurch)
Surveyor Declaration

Survey Details

Dataset Description LOTS 194 - 210, 506, 608 - 609 & 1008 - 1010 BEING A SUBDIVISION OF LOT 4 DP 563687 & LOT 1007 DP 573510

Status Initiated

Land District Canterbury **Survey Class** Class A

Submitted Date **Survey Approval Date**
Deposit Date

Territorial Authorities

Waimakariri District

Comprised In

RT 1002655
RT 1045270

Created Parcels

Parcels	Parcel Intent	Area	RT Reference
Lot 194 Deposited Plan 601500	Fee Simple Title	0.0420 Ha	1172518
Lot 195 Deposited Plan 601500	Fee Simple Title	0.0420 Ha	1172519
Lot 196 Deposited Plan 601500	Fee Simple Title	0.0420 Ha	1172520
Lot 197 Deposited Plan 601500	Fee Simple Title	0.0431 Ha	1172521
Lot 198 Deposited Plan 601500	Fee Simple Title	0.1110 Ha	1172522
Lot 199 Deposited Plan 601500	Fee Simple Title	0.0452 Ha	1172523
Lot 200 Deposited Plan 601500	Fee Simple Title	0.0429 Ha	1172524
Lot 201 Deposited Plan 601500	Fee Simple Title	0.0420 Ha	1172525
Lot 202 Deposited Plan 601500	Fee Simple Title	0.0429 Ha	1172526
Lot 203 Deposited Plan 601500	Fee Simple Title	0.0414 Ha	1172527
Lot 210 Deposited Plan 601500	Fee Simple Title	0.0408 Ha	1172534
Lot 204 Deposited Plan 601500	Fee Simple Title	0.0410 Ha	1172528
Lot 205 Deposited Plan 601500	Fee Simple Title	0.0421 Ha	1172529
Lot 206 Deposited Plan 601500	Fee Simple Title	0.0350 Ha	1172530
Lot 207 Deposited Plan 601500	Fee Simple Title	0.0350 Ha	1172531
Lot 208 Deposited Plan 601500	Fee Simple Title	0.0359 Ha	1172532
Lot 209 Deposited Plan 601500	Fee Simple Title	0.0426 Ha	1172533
Lot 506 Deposited Plan 601500	Vesting on Deposit for Recreation Reserve (Territorial Authority)	0.1635 Ha	
Lot 608 Deposited Plan 601500	Vesting on Deposit for Road	0.2502 Ha	



Title Plan - LT 601500

Created Parcels

Parcels	Parcel Intent	Area	RT Reference
Lot 609 Deposited Plan 601500	Fee Simple Title	0.0344 Ha	1172535
Lot 1008 Deposited Plan 601500	Fee Simple Title	0.7384 Ha	1172536
Area A Deposited Plan 601500	Easement		
Area B Deposited Plan 601500	Easement		
Lot 1009 Deposited Plan 601500	Fee Simple Title	1.2810 Ha	1172537
Lot 1010 Deposited Plan 601500	Fee Simple Title	1.1396 Ha	1172538
Total Area		<u>4.3740 Ha</u>	

LT 601500 Schedule/Memorandum

Land registration district
Canterbury

Territorial authority
Waimakariri District

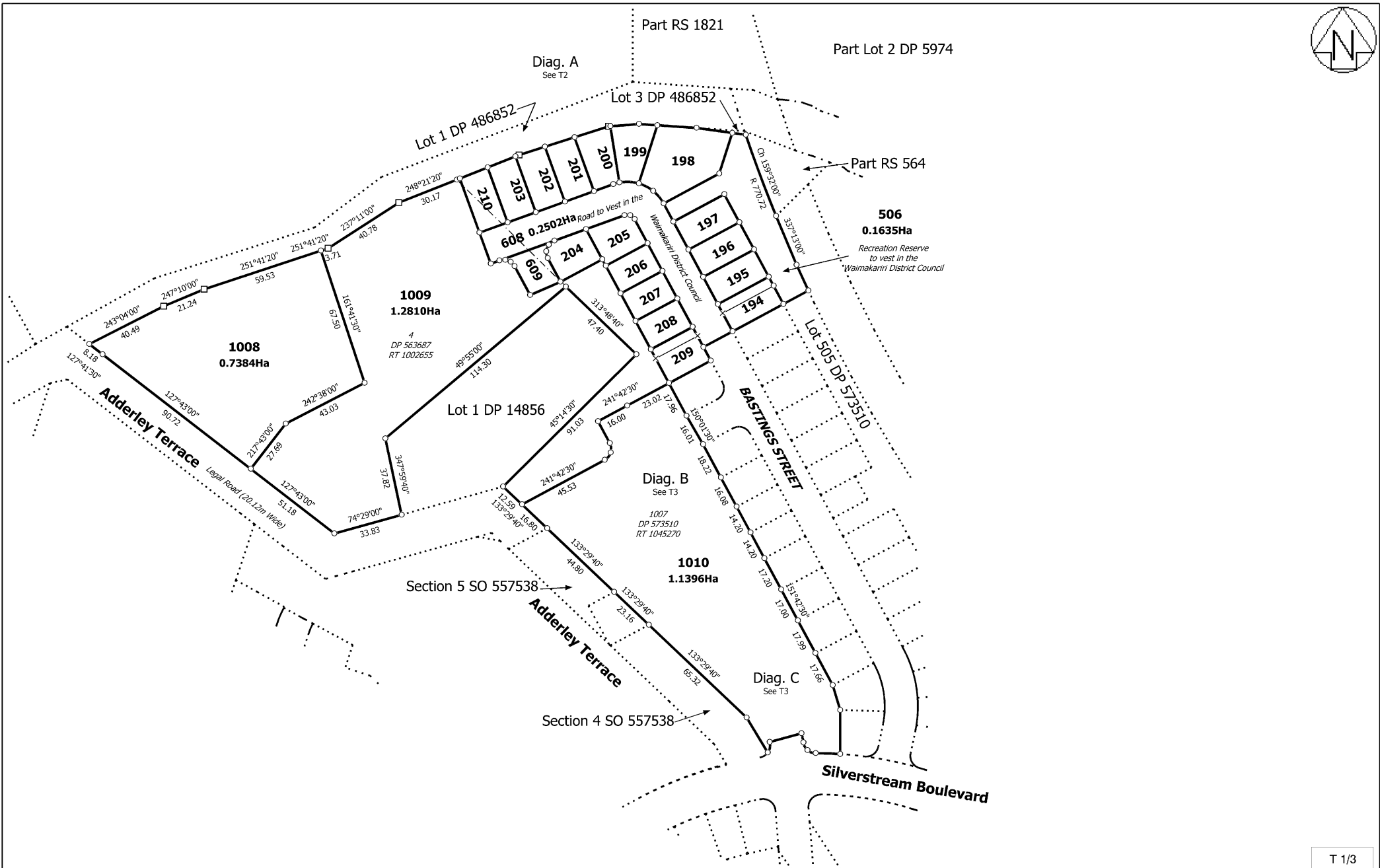
Memorandum of Easements

Parcels shown with a prefix of *HL*- include height-limited boundaries

PURPOSE	SHOWN	BURDENED LAND	BENEFITED LAND
Right of way Right to convey electricity, telecommunications, water	Lot 609	Lot 609	Lot 204

Memorandum of Easements in Gross

PURPOSE	SHOWN	BURDENED LAND	GRANTEE
Right to drain water	A	Lot 209	Waimakariri District Council
" "	B	Lot 194	Waimakariri District Council





Diag. A

Lot 1 DP 486852

Lot 3 DP 486852

Part RS 564

Part RS 564

1010

T 2/3

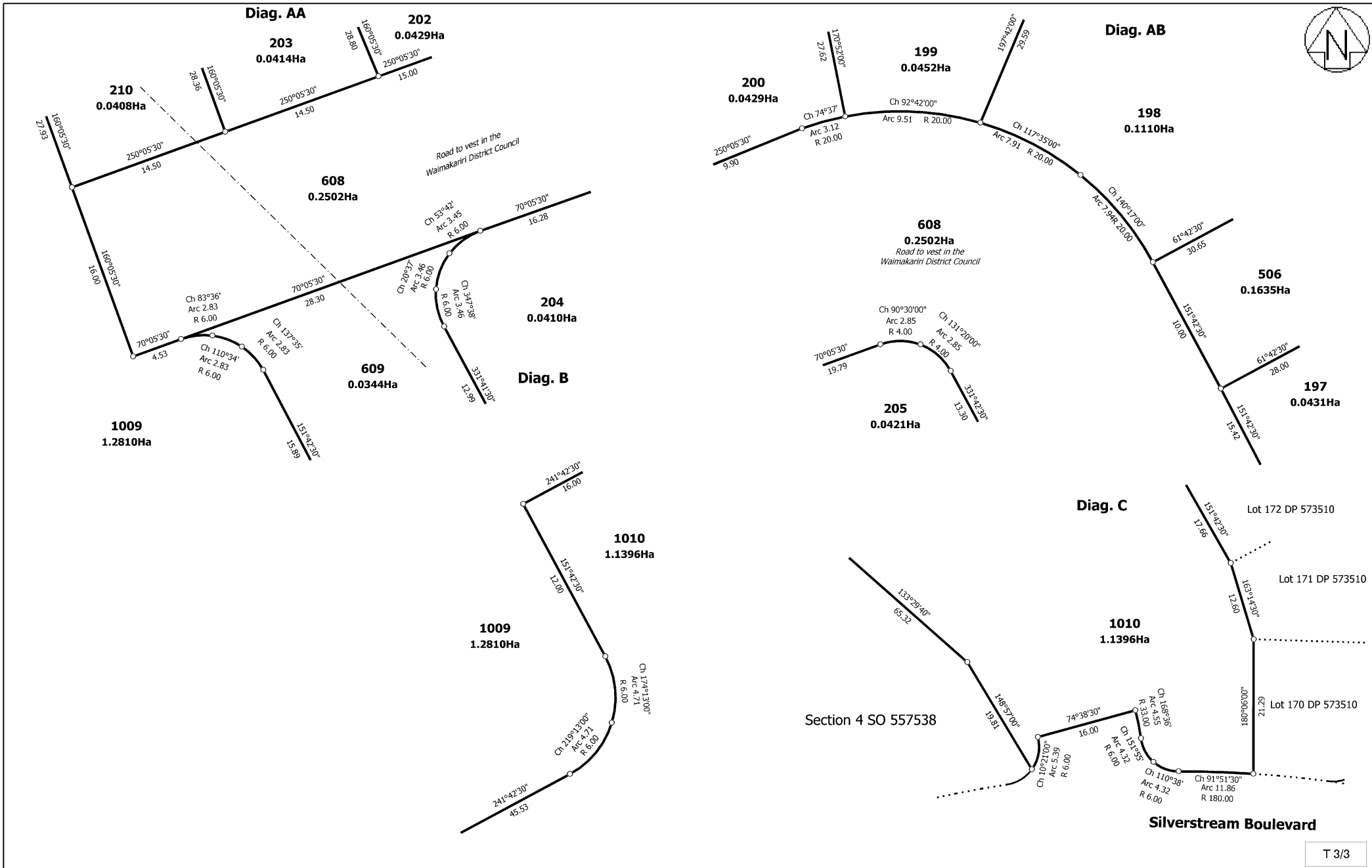


Land District: Canterbury

LOTS 194 - 210, 506, 608 - 609 & 1008 - 1010 BEING A SUBDIVISION OF LOT 4 DP 563687 & LOT 1007 DP 573510

Surveyor: Christopher Paul Hopper
Firm: Davis Ogilvie & Partners Ltd (Christcl)

Title Plan
LT 601500
DRAFT



Land District: Canterbury
 Digitally Generated Plan
 Generated on: 19/02/2024 2:15pm Page 6 of 6

LOTS 194 - 210, 506, 608 - 609 & 1008 - 1010 BEING A SUBDIVISION OF LOT
 4 DP 563687 & LOT 1007 DP 573510

Surveyor: Christopher Paul Hopper
 Firm: Davis Ogilvie & Partners Ltd (Christcl)

Title Plan
 LT 601500
 DRAFT