



Title Plan - DP 476973

Survey Number DP 476973
Surveyor Reference 31457 Silverstream Stage 4A
Surveyor Christopher Paul Hopper
Survey Firm Davis Ogilvie & Partners Ltd (Christchurch)
Surveyor Declaration I Christopher Paul Hopper, being a licensed cadastral surveyor, certify that:
(a) this dataset provided by me and its related survey are accurate, correct and in accordance with the Cadastral Survey Act 2002 and the Rules for Cadastral Survey 2010, and
(b) the survey was undertaken by me or under my personal direction.
Declared on 05 Nov 2014 09:42 AM

Survey Details

Dataset Description LOTS 361 - 410, 2007, 2008, 3004, 4003, 5008 - 5010 & 7016 BEING A SUBDIVISION OF LOT 7001 DP 453541, PART RURAL SECTION 472 & SECTION 2 SO 453503 AND EASEMENT OVER PART RURAL SECTION 367

Status Deposited

Land District Canterbury **Survey Class** Class A

Submitted Date 05/11/2014 **Survey Approval Date** 05/11/2014
Deposit Date 21/10/2014

Territorial Authorities

Waimakariri District

Comprised In

CT 616343
CT 616344
CT CB407/33

Created Parcels

Parcels	Parcel Intent	Area	CT Reference
Area H Deposited Plan 476973	Easement		
Area I Deposited Plan 476973	Easement		
Area J Deposited Plan 476973	Easement		
Area K Deposited Plan 476973	Easement		
Area L Deposited Plan 476973	Easement		
Area M Deposited Plan 476973	Easement		
Area N Deposited Plan 476973	Easement		
Area O Deposited Plan 476973	Easement		
Area P Deposited Plan 476973	Easement		
Lot 361 Deposited Plan 476973	Fee Simple Title	0.0400 Ha	660356
Lot 362 Deposited Plan 476973	Fee Simple Title	0.0383 Ha	660357
Lot 363 Deposited Plan 476973	Fee Simple Title	0.0381 Ha	660358
Lot 364 Deposited Plan 476973	Fee Simple Title	0.0390 Ha	660359
Lot 365 Deposited Plan 476973	Fee Simple Title	0.0375 Ha	660360
Lot 366 Deposited Plan 476973	Fee Simple Title	0.0342 Ha	660361
Lot 367 Deposited Plan 476973	Fee Simple Title	0.0516 Ha	660362
Lot 368 Deposited Plan 476973	Fee Simple Title	0.0522 Ha	660363



Title Plan - DP 476973

Created Parcels

Parcels	Parcel Intent	Area	CT Reference
Lot 369 Deposited Plan 476973	Fee Simple Title	0.0395 Ha	660364
Lot 370 Deposited Plan 476973	Fee Simple Title	0.0443 Ha	660365
Lot 371 Deposited Plan 476973	Fee Simple Title	0.0370 Ha	660366
Lot 372 Deposited Plan 476973	Fee Simple Title	0.0392 Ha	660367
Lot 373 Deposited Plan 476973	Fee Simple Title	0.0400 Ha	660368
Lot 374 Deposited Plan 476973	Fee Simple Title	0.0309 Ha	660369
Lot 375 Deposited Plan 476973	Fee Simple Title	0.0309 Ha	660370
Lot 376 Deposited Plan 476973	Fee Simple Title	0.0309 Ha	660371
Lot 377 Deposited Plan 476973	Fee Simple Title	0.0500 Ha	660372
Lot 378 Deposited Plan 476973	Fee Simple Title	0.0477 Ha	660373
Lot 379 Deposited Plan 476973	Fee Simple Title	0.0328 Ha	660374
Lot 380 Deposited Plan 476973	Fee Simple Title	0.0328 Ha	660375
Lot 381 Deposited Plan 476973	Fee Simple Title	0.0484 Ha	660376
Lot 382 Deposited Plan 476973	Fee Simple Title	0.0550 Ha	660377
Lot 383 Deposited Plan 476973	Fee Simple Title	0.0521 Ha	660378
Lot 384 Deposited Plan 476973	Fee Simple Title	0.0464 Ha	660379
Lot 385 Deposited Plan 476973	Fee Simple Title	0.0347 Ha	660380
Lot 386 Deposited Plan 476973	Fee Simple Title	0.0335 Ha	660381
Lot 387 Deposited Plan 476973	Fee Simple Title	0.0345 Ha	660382
Lot 388 Deposited Plan 476973	Fee Simple Title	0.0345 Ha	660383
Lot 389 Deposited Plan 476973	Fee Simple Title	0.0310 Ha	660384
Lot 390 Deposited Plan 476973	Fee Simple Title	0.0310 Ha	660385
Lot 391 Deposited Plan 476973	Fee Simple Title	0.0369 Ha	660386
Lot 392 Deposited Plan 476973	Fee Simple Title	0.0363 Ha	660387
Lot 393 Deposited Plan 476973	Fee Simple Title	0.0383 Ha	660388
Lot 394 Deposited Plan 476973	Fee Simple Title	0.0427 Ha	660389
Lot 395 Deposited Plan 476973	Fee Simple Title	0.0364 Ha	660390
Lot 396 Deposited Plan 476973	Fee Simple Title	0.0300 Ha	660391
Lot 397 Deposited Plan 476973	Fee Simple Title	0.0333 Ha	660392
Lot 398 Deposited Plan 476973	Fee Simple Title	0.0325 Ha	660393
Lot 399 Deposited Plan 476973	Fee Simple Title	0.0336 Ha	660394
Lot 400 Deposited Plan 476973	Fee Simple Title	0.0350 Ha	660395
Lot 401 Deposited Plan 476973	Fee Simple Title	0.0318 Ha	660396
Lot 402 Deposited Plan 476973	Fee Simple Title	0.0360 Ha	660397
Lot 403 Deposited Plan 476973	Fee Simple Title	0.0319 Ha	660398
Lot 404 Deposited Plan 476973	Fee Simple Title	0.0320 Ha	660399
Lot 405 Deposited Plan 476973	Fee Simple Title	0.0320 Ha	660400
Lot 406 Deposited Plan 476973	Fee Simple Title	0.0335 Ha	660401
Lot 407 Deposited Plan 476973	Fee Simple Title	0.0461 Ha	660402
Lot 408 Deposited Plan 476973	Fee Simple Title	0.0379 Ha	660403
Lot 409 Deposited Plan 476973	Fee Simple Title	0.0452 Ha	660404
Lot 410 Deposited Plan 476973	Fee Simple Title	0.0420 Ha	660405
Lot 2007 Deposited Plan 476973	Fee Simple Title	0.5548 Ha	660406
Lot 2008 Deposited Plan 476973	Fee Simple Title	0.3422 Ha	660407



Title Plan - DP 476973

Created Parcels

Parcels	Parcel Intent	Area	CT Reference
Lot 4003 Deposited Plan 476973	Vesting on Deposit for Local Purpose Reserve	0.0851 Ha	660953
Lot 5008 Deposited Plan 476973	Vesting on Deposit for Recreation Reserve (Territorial Authority)	0.1024 Ha	660954
Lot 5009 Deposited Plan 476973	Vesting on Deposit for Recreation Reserve (Territorial Authority)	0.1271 Ha	660955
Lot 5010 Deposited Plan 476973	Vesting on Deposit for Recreation Reserve (Territorial Authority)	0.1275 Ha	660956
Lot 7016 Deposited Plan 476973	Fee Simple Title	0.5540 Ha	660408
Area A Deposited Plan 476973	Easement		
Area B Deposited Plan 476973	Easement		
Area C Deposited Plan 476973	Easement		
Area D Deposited Plan 476973	Easement		
Area E Deposited Plan 476973	Easement		
Area F Deposited Plan 476973	Easement		
Area G Deposited Plan 476973	Easement		
Area AA Deposited Plan 476973	Easement		
	Road	<u>0.9081 Ha</u>	
Total Area		4.7126 Ha	

Schedule / Memorandum

Land Registration District
Canterbury

Plan Number
DP 476973

Territorial Authority (the Council)
Waimakariri District Council



MEMORANDUM OF EASEMENTS			
Purpose	Shown	Servient Tenement	Dominant Tenement
RIGHT OF WAY, RIGHT TO DRAIN SEWAGE & WATER, RIGHT TO CONVEY WATER, ELECTRICITY, TELECOMMUNICATIONS & COMPUTER MEDIA	A DP 476973	Lot 367 DP 476973	Lot 368 DP 476973
	B DP 476973	Lot 368 DP 476973	Lot 367 DP 476973
	C DP 476973	Lot 377 DP 476973	Lot 378 DP 476973
	D DP 476973	Lot 378 DP 476973	Lot 377 DP 476973
	E DP 476973	Lot 381 DP 476973	Lot 382 DP 476973 Lot 383 DP 476973
	F DP 476973	Lot 382 DP 476973	Lot 381 DP 476973 Lot 383 DP 476973
	G DP 476973	Lot 383 DP 476973	Lot 381 DP 476973 Lot 382 DP 476973
RIGHT OF WAY	E DP 476973	Lot 381 DP 476973	LOT 380 DP 476973 LOT 384 DP 476973
	F DP 476973	Lot 382 DP 476973	
	G DP 476973	Lot 383 DP 476973	

Schedule / Memorandum

MEMORANDUM OF EASEMENTS IN GROSS			
Purpose	Shown	Servient Tenement	Grantee
RIGHT TO CONVEY TELECOMMUNICATIONS & COMPUTER MEDIA	A DP 476973	Lot 367 DP 476973	Chorus New Zealand Ltd
	B DP 476973	Lot 368 DP 476973	
	C DP 476973	Lot 377 DP 476973	
	D DP 476973	Lot 378 DP 476973	
	E DP 476973	Lot 381 DP 476973	
	F DP 476973	Lot 382 DP 476973	
	G DP 476973	Lot 383 DP 476973	

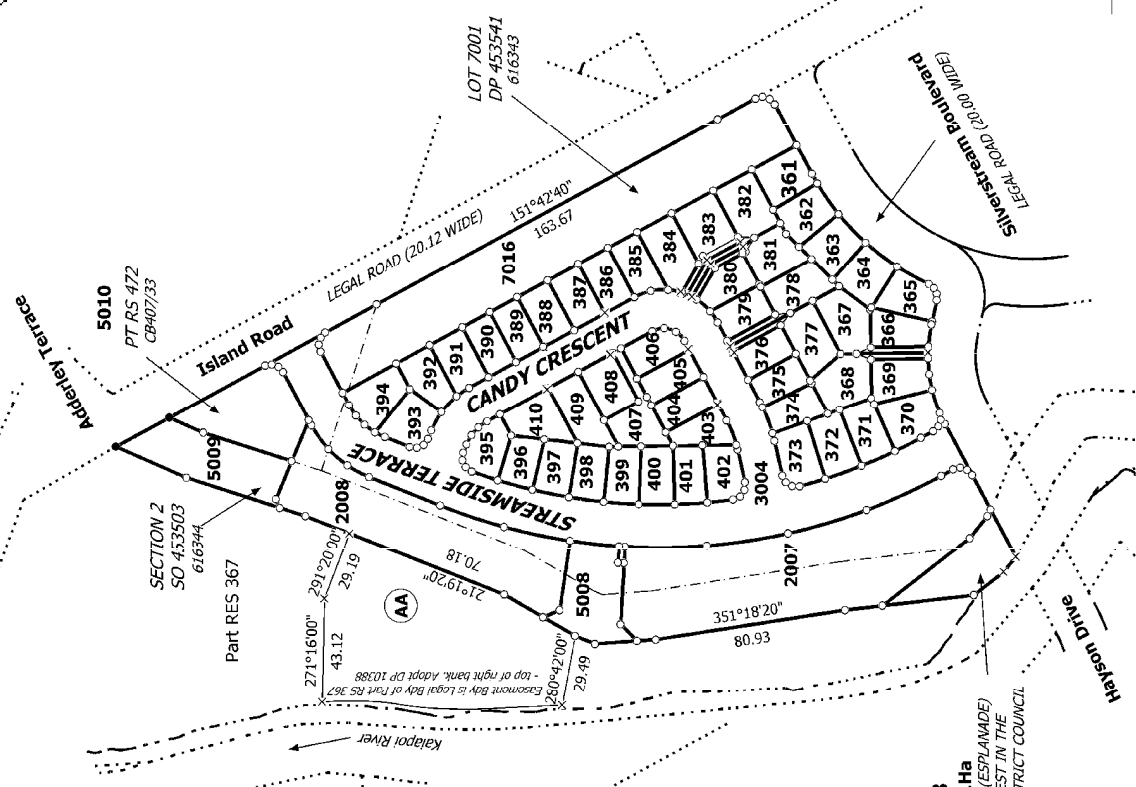
PROPOSED EASEMENTS IN GROSS			
Purpose	Shown	Servient Tenement	Grantee
RIGHT TO DRAIN WATER IN GROSS	AA DP 476973	Part RS 367	Waimakariri District Council

Schedule / Memorandum

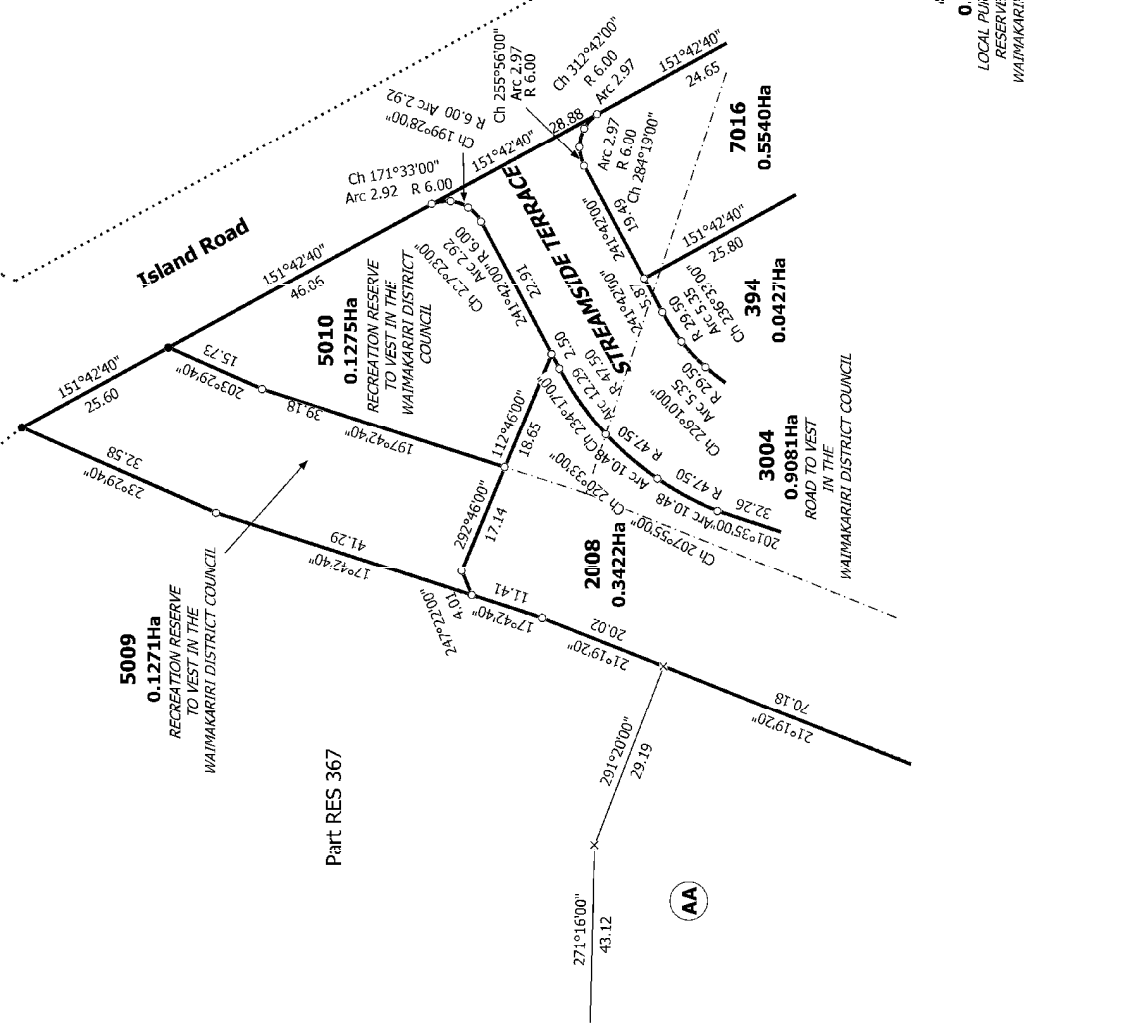
MEMORANDUM OF EASEMENTS IN GROSS			
Purpose	Shown	Servient Tenement	Grantee
RIGHT TO CONVEY ELECTRICITY	H DP 476973	Lot 410 DP 476973	Mainpower New Zealand Ltd
	I DP 476973	Lot 408 DP 476973	
	J DP 476973	Lot 406 DP 476973	
	K DP 476973	Lot 404 DP 476973	
	L DP 476973	Lot 403 DP 476973	
	M DP 476973	Lot 376 DP 476973	
	N DP 476973	Lot 384 DP 476973	
	O DP 476973	Lot 386 DP 476973	
P DP 476973	Lot 387 DP 476973		



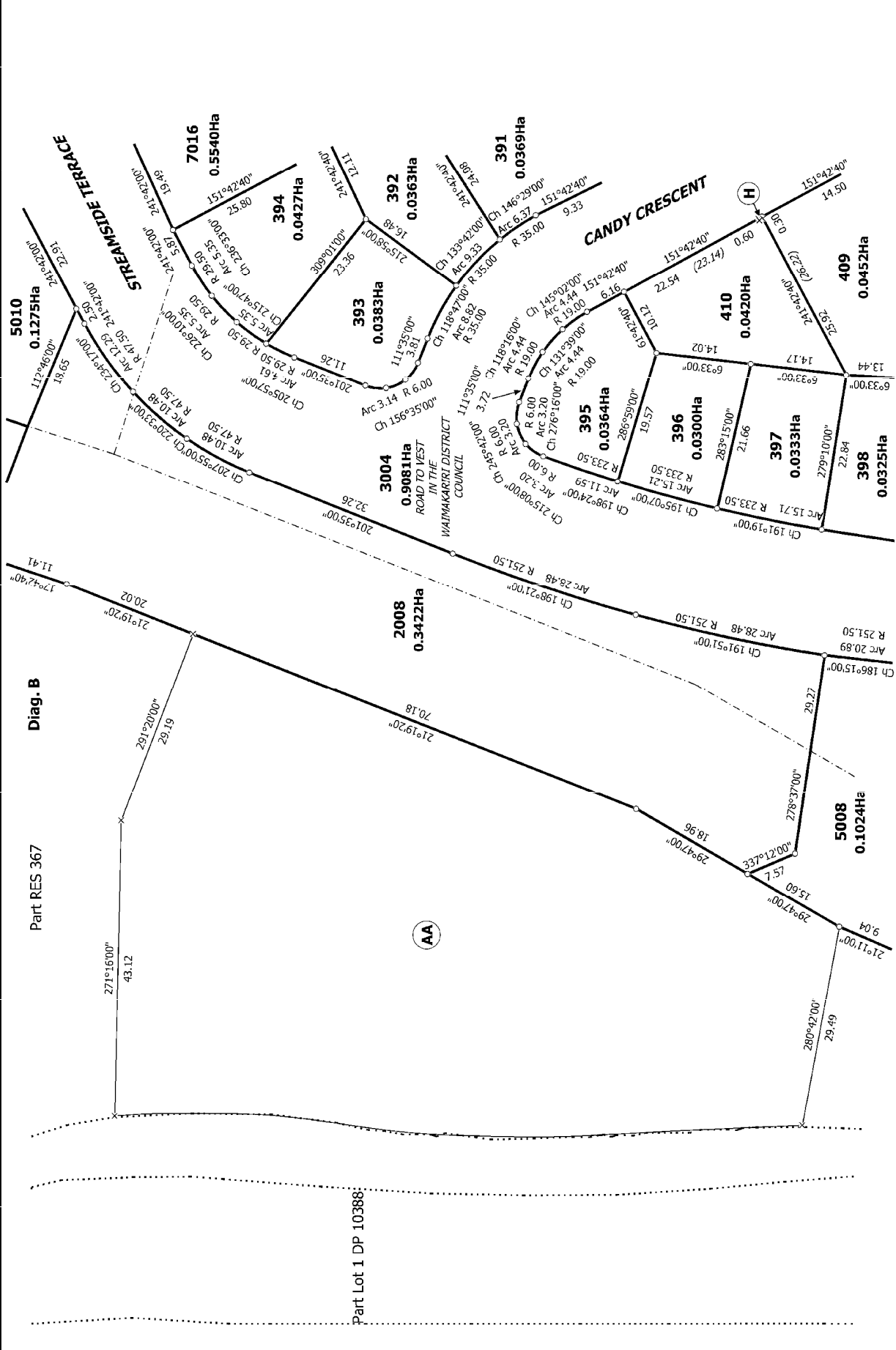
Diag. A



Diag. D



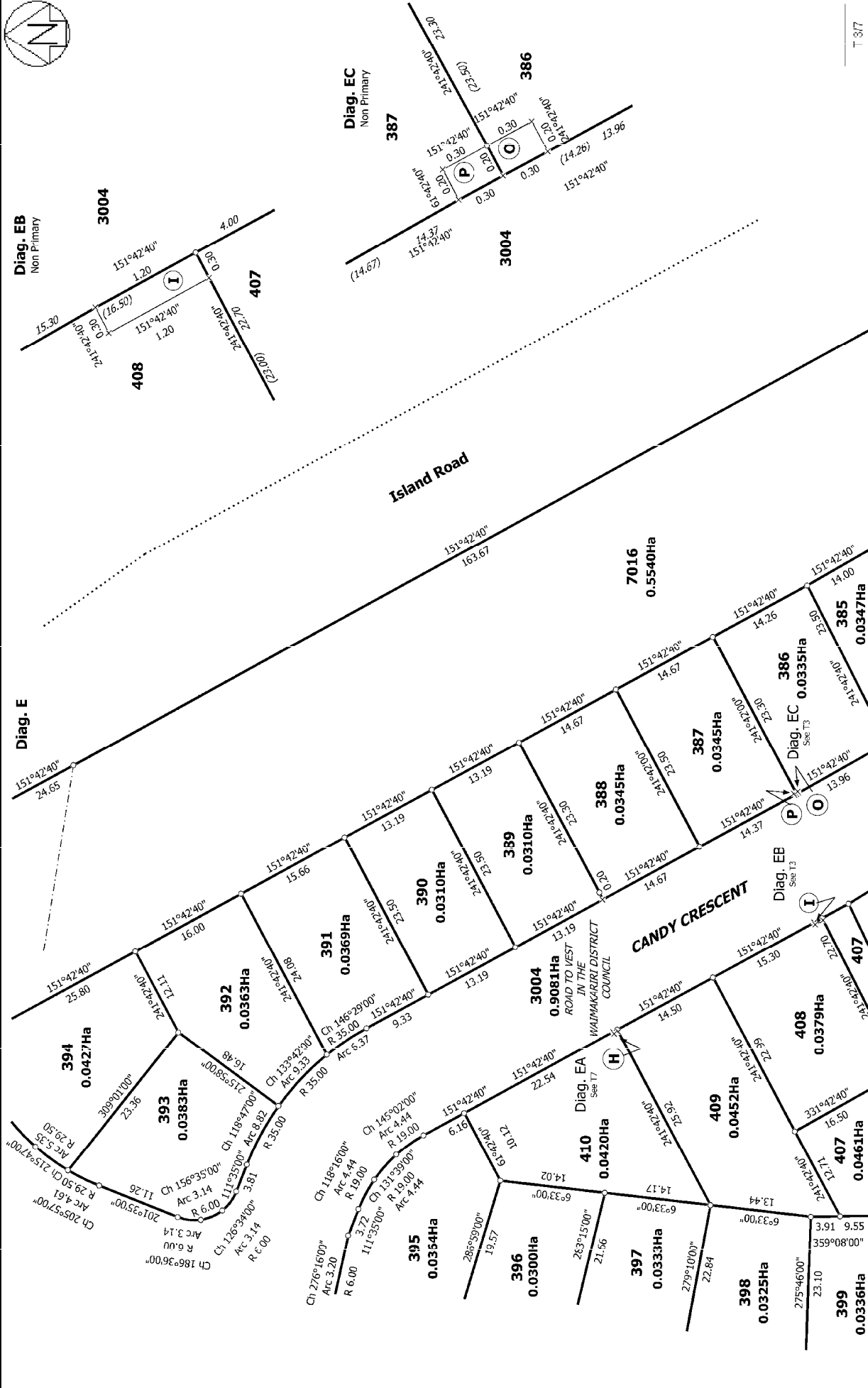
Land District: Canterbury	Surveyor: Christopher Paul Hopper Firm: Davis Ogilvie & Partners Ltd (Christch	Title Plan DP 476973
Digitally Generated Plan	Lots 361 - 410, 2007, 2008, 3004, 4003, 5008 - 5010 & 7016 being a subdivision of Lot 7001 DP 453541, Part Rural Section 472 & Section 2 SO 453503 and FASFMV OVER Part Rural Section 367	Deposited on: 21/10/2014
Generated on: 07/11/2014 11:01:01am Page 7 of 13		



T 2/7

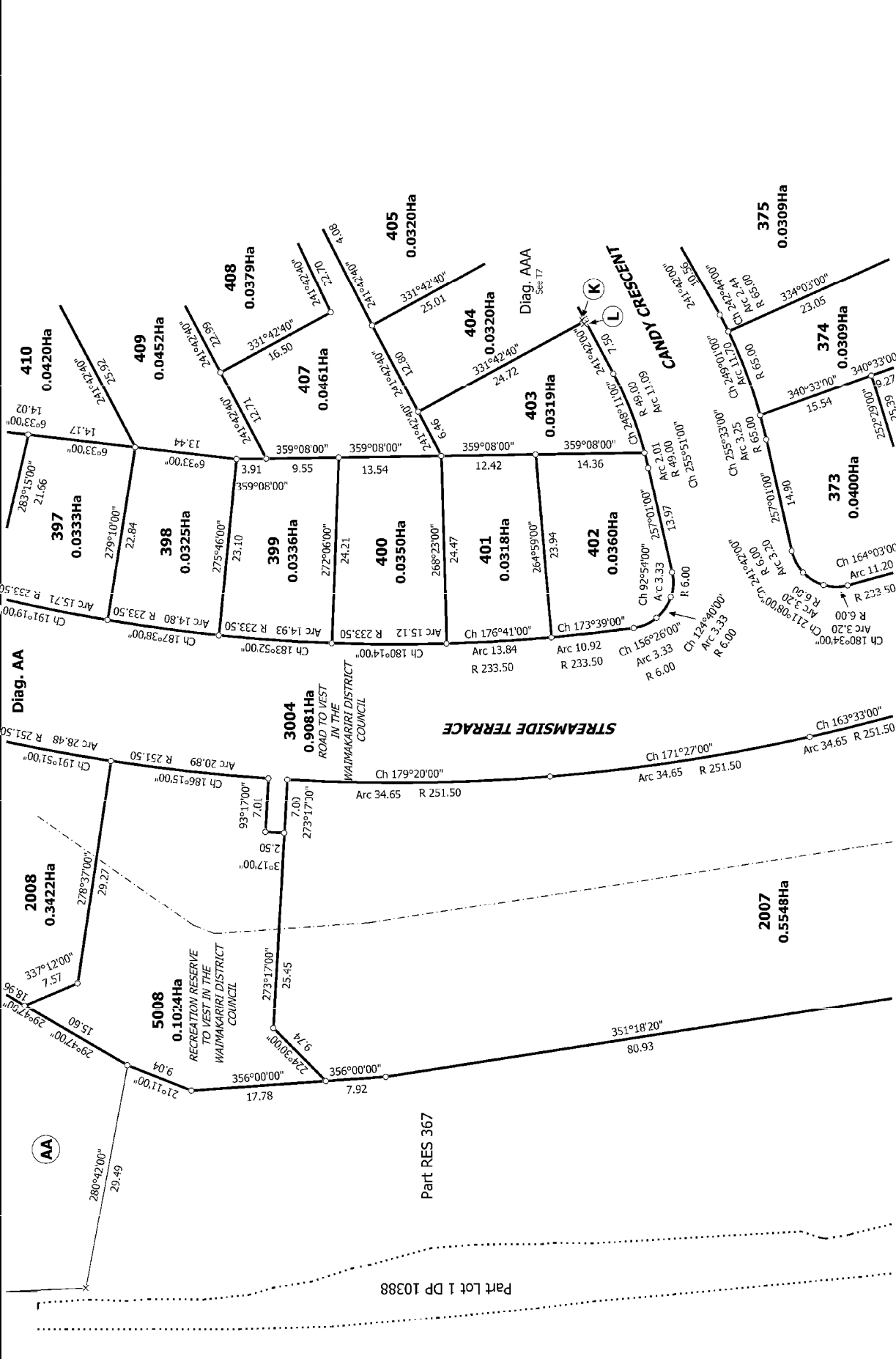
<p>Land District: Canterbury</p> <p>Digitally Generated Plan</p> <p>Generated on: 07/11/2014 11:01am Page 8 of 13</p>	<p>Surveyor: Christopher Paul Hopper</p> <p>Firm: Davis Ogilvie & Partners Ltd (Christch</p>	<p>Title Plan</p> <p>DP 476973</p>	<p>Deposited on: 21/10/2014</p>
---	--	------------------------------------	---------------------------------

LOTS 361 - 410, 2007, 2008, 3004, 4003, 5008 - 5010 & 7016 BEING A
 SUBDIVISION OF LOT 7001 DP 453541, PART RURAL SECTION 472 &
 SFCTION 2 SO 453503 AND FASFMEN OVFR PART RURAL SECTION 367



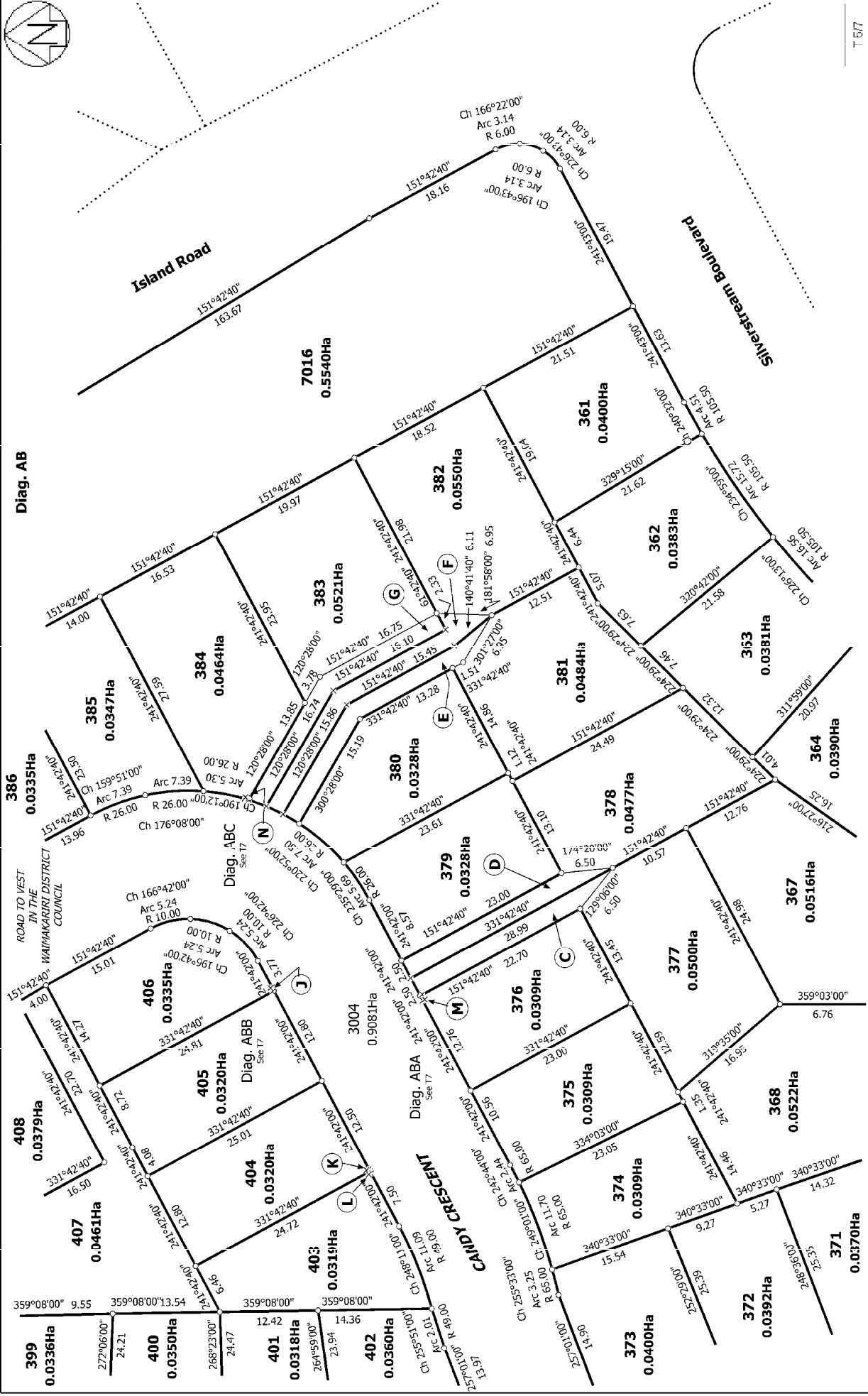
Land District: Canterbury	Surveyor: Christopher Paul Hopper Firm: Davis Ogilvie & Partners Ltd (Christch	Title Plan DP 476973
Digitally Generated Plan Generated on: 07/11/2014 11:01am Page 9 of 13	LOTS 361 - 410, 2007, 2008, 3004, 4003, 5008 - 5010 & 7016 BEING A SUBDIVISION OF LOT 7001 DP 453541, PART RURAL SECTION 472 & SECTION 2 SO 453503 AND FASFMVNT OVR PART RURAL SECTION 367	Deposited on: 21/10/2014

Digitally Generated Plan
 Generated on: 07/11/2014 11:01am Page 9 of 13
 Title Plan DP 476973
 Surveyor: Christopher Paul Hopper
 Firm: Davis Ogilvie & Partners Ltd (Christch
 Deposited on: 21/10/2014



T 417

<p>Land District: Canterbury</p> <p>Digitally Generated Plan</p> <p>Generated on: 07/11/2014 11:01:01am Page 10 of 13</p>	<p>LOTS 361 - 410, 2007, 2008, 3004, 4003, 5008 - 5010 & 7016 BEING A SUBDIVISION OF LOT 7001 DP 453541, PART RURAL SECTION 472 & SECTION 2 SO 453503 AND FASFMVNT OVER PART RURAL SECTION 367</p>	<p>Surveyor: Christopher Paul Hopper</p> <p>Firm: Davis Ogilvie & Partners Ltd (Christch</p>	<p>Title Plan</p> <p>DP 476973</p> <p>Deposited on: 21/10/2014</p>
---	--	--	--



T 517

Title Plan
DP 476973

Surveyor: Christopher Paul Hopper
Firm: Davis Ogilvie & Partners Ltd (Christch)

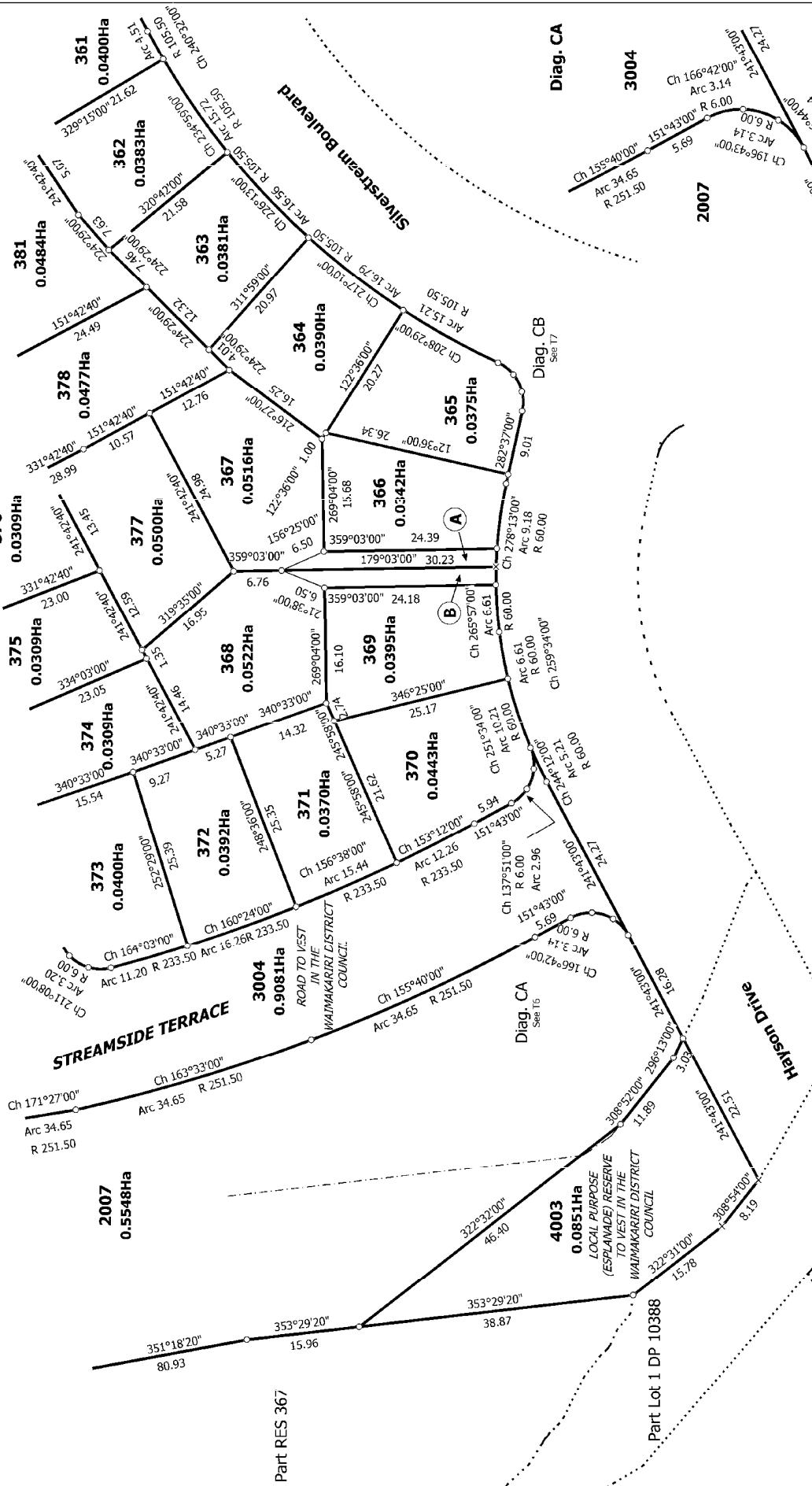
LOTS 361 - 410, 2007, 2008, 3004, 4003, 5008 - 5010 & 7016 BEING A
SUBDIVISION OF LOT 7001 DP 453541, PART RURAL SECTION 472 &
SECTION 2 SO 453503 AND FASFMV OVER PART RURAL SECTION 367

Land District: Canterbury
Digitally Generated Plan
Generated on: 07/11/2014 11:01am Page 11 of 13

Digitally Generated Plan Page 11 of 13



Diag. C



Land District: Canterbury

Digitally Generated Plan
Generated on: 07/11/2014 11:01:01am Page 12 of 13

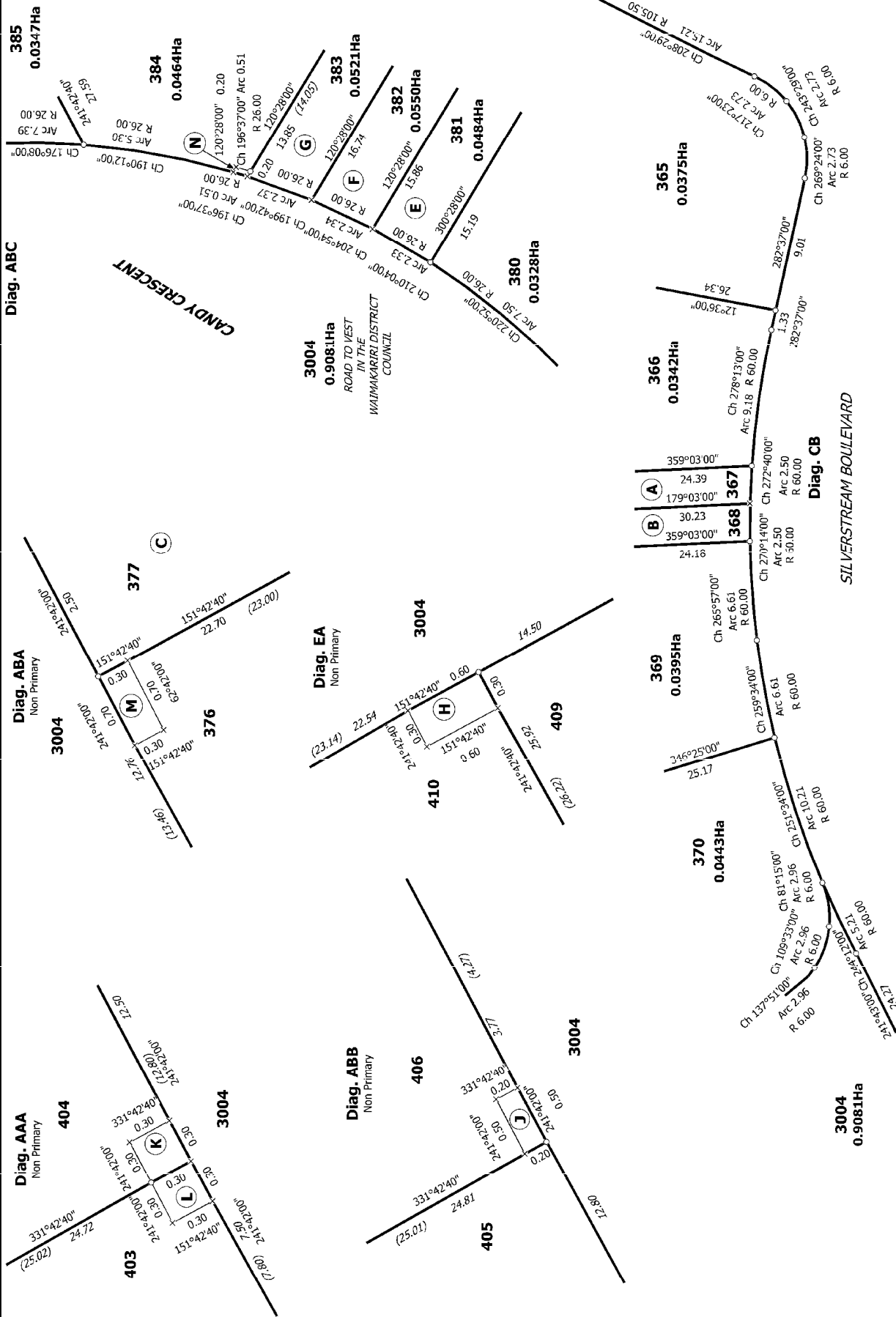
LOTS 361 - 410, 2007, 2008, 3004, 4003, 5008 - 5010 & 7016 BEING A
SUBDIVISION OF LOT 7001 DP 453541, PART RURAL SECTION 472 &
SECTION 2 SO 453503 AND FASFMNT OVER PART RURAL SECTION 367

Surveyor: Christopher Paul Hopper
Firm: Davis Ogilvie & Partners Ltd (Christch

Title Plan
DP 476973

Deposited on: 21/10/2014

This document is a computer-generated plan and does not represent a physical survey. It is intended for use as a reference only and should not be used for legal purposes. The information contained herein is based on the best available data and is subject to change without notice.



<p>Land District: Canterbury</p>	<p>Surveyor: Christopher Paul Hopper Firm: Davis Ogilvie & Partners Ltd (Christch)</p>
<p>Digitally Generated Plan Generated on: 07/11/2014 11:07am Page 13 of 13</p>	
<p>LOTS 361 - 410, 2007, 2008, 3004, 4003, 5008 - 5010 & 7016 BEING A SUBDIVISION OF LOT 7001 DP 453541, PART RURAL SECTION 472 & SECTION 2 SO 453503 AND FASFMNT OVR PART RURAL SECTION 367</p>	
<p>Title Plan DP 476973</p>	
<p>Deposited on: 21/10/2014</p>	