



Title Plan - LT 528617

Survey Number LT 528617
Surveyor Reference 36490 Silverstream Stage 3b
Surveyor Christopher Paul Hopper
Survey Firm Davis Ogilvie & Partners Ltd (Christchurch)
Surveyor Declaration I Christopher Paul Hopper, being a licensed cadastral surveyor, certify that:
(a) this dataset provided by me and its related survey are accurate, correct and in accordance with the Cadastral Survey Act 2002 and the Rules for Cadastral Survey 2010, and
(b) the survey was undertaken by me or under my personal direction.
Declared on 13 Nov 2018 08:13 AM

Survey Details

Dataset Description LOTS 312 - 349, 686 - 690, 3008 & 5012 BEING A SUBDIVISION OF LOT 1002 DP 524167
Status Submitted
Land District Canterbury **Survey Class** Class A
Submitted Date 13/11/2018 **Survey Approval Date**
Deposit Date

Territorial Authorities

Waimakariri District

Comprised In

RT 835932

Created Parcels

Parcels	Parcel Intent	Area	RT Reference
Lot 312 Deposited Plan 528617	Fee Simple Title	0.0500 Ha	855179
Lot 313 Deposited Plan 528617	Fee Simple Title	0.0500 Ha	855180
Lot 314 Deposited Plan 528617	Fee Simple Title	0.0500 Ha	855181
Lot 315 Deposited Plan 528617	Fee Simple Title	0.0500 Ha	855182
Lot 316 Deposited Plan 528617	Fee Simple Title	0.0500 Ha	855183
Lot 317 Deposited Plan 528617	Fee Simple Title	0.0500 Ha	855184
Lot 318 Deposited Plan 528617	Fee Simple Title	0.0501 Ha	855185
Lot 319 Deposited Plan 528617	Fee Simple Title	0.0501 Ha	855186
Lot 320 Deposited Plan 528617	Fee Simple Title	0.0501 Ha	855187
Lot 321 Deposited Plan 528617	Fee Simple Title	0.0522 Ha	855188
Lot 322 Deposited Plan 528617	Fee Simple Title	0.0564 Ha	855189
Lot 323 Deposited Plan 528617	Fee Simple Title	0.0675 Ha	855190
Lot 324 Deposited Plan 528617	Fee Simple Title	0.0606 Ha	855191
Lot 325 Deposited Plan 528617	Fee Simple Title	0.0586 Ha	855192
Lot 326 Deposited Plan 528617	Fee Simple Title	0.0345 Ha	855193
Lot 327 Deposited Plan 528617	Fee Simple Title	0.0341 Ha	855194
Lot 328 Deposited Plan 528617	Fee Simple Title	0.0340 Ha	855195
Lot 329 Deposited Plan 528617	Fee Simple Title	0.0585 Ha	855196
Lot 330 Deposited Plan 528617	Fee Simple Title	0.0350 Ha	855197
Lot 331 Deposited Plan 528617	Fee Simple Title	0.0325 Ha	855198



Title Plan - LT 528617

Created Parcels

Parcels	Parcel Intent	Area	RT Reference
Lot 332 Deposited Plan 528617	Fee Simple Title	0.0325 Ha	855199
Lot 333 Deposited Plan 528617	Fee Simple Title	0.0325 Ha	855200
Lot 334 Deposited Plan 528617	Fee Simple Title	0.0350 Ha	855201
Lot 335 Deposited Plan 528617	Fee Simple Title	0.0350 Ha	855202
Lot 336 Deposited Plan 528617	Fee Simple Title	0.0325 Ha	855203
Lot 337 Deposited Plan 528617	Fee Simple Title	0.0325 Ha	855204
Lot 338 Deposited Plan 528617	Fee Simple Title	0.0325 Ha	855205
Lot 339 Deposited Plan 528617	Fee Simple Title	0.0350 Ha	855206
Lot 340 Deposited Plan 528617	Fee Simple Title	0.0355 Ha	855207
Lot 341 Deposited Plan 528617	Fee Simple Title	0.0323 Ha	855208
Lot 342 Deposited Plan 528617	Fee Simple Title	0.0323 Ha	855209
Lot 343 Deposited Plan 528617	Fee Simple Title	0.0323 Ha	855210
Lot 344 Deposited Plan 528617	Fee Simple Title	0.0355 Ha	855211
Lot 345 Deposited Plan 528617	Fee Simple Title	0.0355 Ha	855212
Lot 346 Deposited Plan 528617	Fee Simple Title	0.0323 Ha	855213
Lot 347 Deposited Plan 528617	Fee Simple Title	0.0323 Ha	855214
Lot 348 Deposited Plan 528617	Fee Simple Title	0.0323 Ha	855215
Lot 349 Deposited Plan 528617	Fee Simple Title	0.0355 Ha	855216
Lot 686 Deposited Plan 528617	Fee Simple Title	0.0547 Ha	855217
Lot 687 Deposited Plan 528617	Fee Simple Title	0.0605 Ha	855218
Lot 688 Deposited Plan 528617	Fee Simple Title	0.0496 Ha	855219
Lot 689 Deposited Plan 528617	Fee Simple Title	0.0385 Ha	855220
Lot 690 Deposited Plan 528617	Fee Simple Title	0.0379 Ha	855221
Lot 3008 Deposited Plan 528617	Vesting on Deposit for Road	0.2966 Ha	
Lot 5012 Deposited Plan 528617	Vesting on Deposit for Local Purpose Reserve	0.0521 Ha	855222
Area O Deposited Plan 528617	Easement		
Area N Deposited Plan 528617	Easement		
Area P Deposited Plan 528617	Easement		
Area Q Deposited Plan 528617	Easement		
Area M Deposited Plan 528617	Easement		
Area R Deposited Plan 528617	Easement		
Area S Deposited Plan 528617	Easement		
Area T Deposited Plan 528617	Easement		
Area D Deposited Plan 528617	Easement		
Area A Deposited Plan 528617	Easement		
Area B Deposited Plan 528617	Easement		
Area C Deposited Plan 528617	Easement		
Area E Deposited Plan 528617	Easement		
Area F Deposited Plan 528617	Easement		
Area G Deposited Plan 528617	Easement		
Total Area		<hr/> 2.1674 Ha	

DAVIS OGILVIE & PARTNERS LIMITED
 Level 1, 24 Moorhouse Avenue, Addington
 PO Box 589, Christchurch 8140
 0800 999 333 / 03 366 1653 / hello@do.nz
 Offices in Christchurch, Timaru, Nelson & Greymouth. www.do.nz

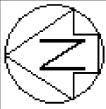


DP 528617

Memorandum of Easements			
Purpose	Shown	Servient Tenement	Dominant Tenement
Right of Way, Right to Drain Sewage and Water, Right to Convey Water, Electricity, Telecommunications, and Computer Media.	M	Lot 686	Lot 687 and Lot 688
	N	Lot 687	Lot 686 and Lot 688
	O	Lot 688	Lot 686 and Lot 687
	P	Lot 322	Lot 323 and Lot 324
	Q	Lot 323	Lot 322 and Lot 324
	R	Lot 324	Lot 322 and Lot 323
	S	Lot 325	Lot 329
	T	Lot 329	Lot 325
Right to Drain Water	E	Lot 323	Lot 322 and Lot 324
	F	Lot 325	Lot 329

Schedule of Existing Easements			
Purpose	Shown	Servient Tenement	Document
Right to Convey Electricity	A	Lot 344	EI 9589749.17
	B	Lot 342	
	C	Lot 333	
	D	Lot 5012	

Schedule of Easements in Gross			
Purpose	Shown	Servient Tenement	Grantee
Right to Convey Telecommunications, and Computer Media.	M	Lot 686	Chorus New Zealand Ltd
	N	Lot 687	
	O	Lot 688	
	P	Lot 322	
	Q	Lot 323	
	R	Lot 324	
	S	Lot 325	
	T	Lot 329	
Right to Convey Telecommunications, and Computer Media.	G	Lot 5012	Enable Networks Limited



Diag. A



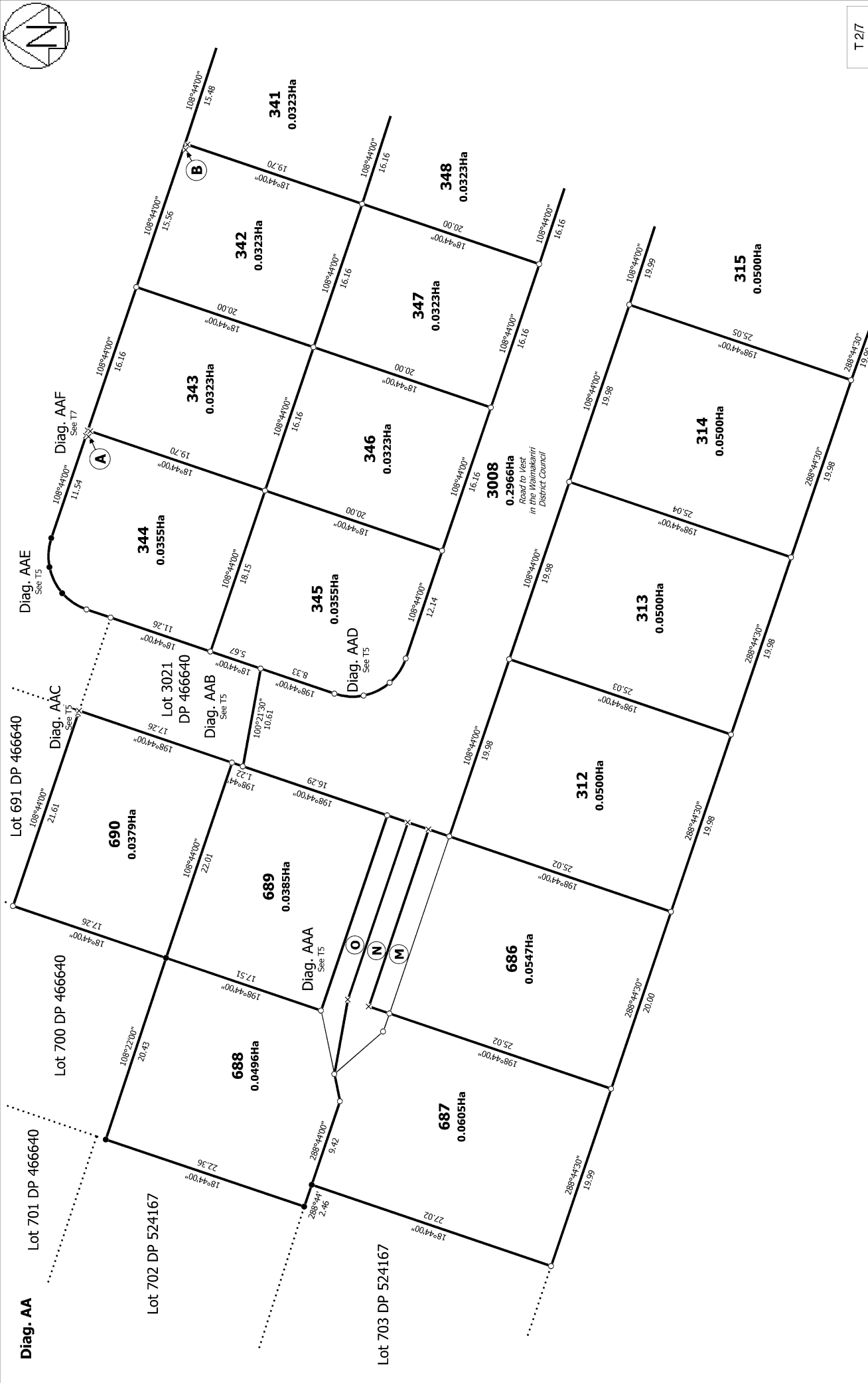
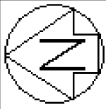
Land District: Canterbury

Digitally Generated Plan
Generated on: 13/7/2018 08:15am Page 4 of 10

LOTS 312 - 349, 686 - 690, 3008 & 5012 BEING A SUBDIVISION OF LOT 1002
DP 524167

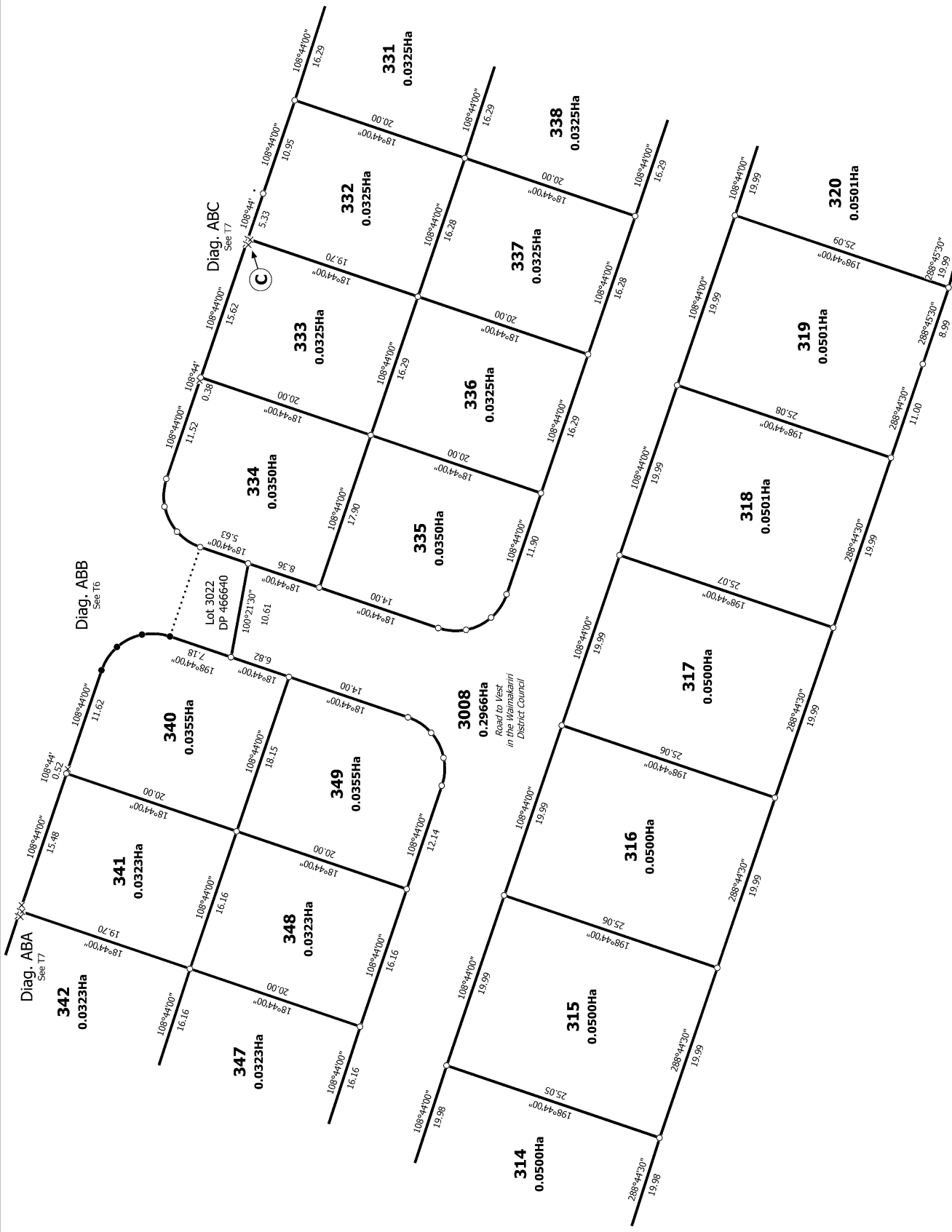
Surveyor: Christopher Paul Hopper
Firm: Davis Ogilvie & Partners Ltd (Christcl)

Title Plan
LT 528617



T 27

<p>Land District: Canterbury</p> <p>Digitally Generated Plan</p> <p>Generated on: 13/7/2018 08:15am Page 5 of 10</p>	<p>LOTS 312 - 349, 686 - 690, 3008 & 5012 BEING A SUBDIVISION OF LOT 1002 DP 524167</p>	<p>Surveyor: Christopher Paul Hopper</p> <p>Firm: Davis Ogilvie & Partners Ltd (Christcl)</p>	<p>Title Plan</p> <p>LT 528617</p>
---	--	---	--



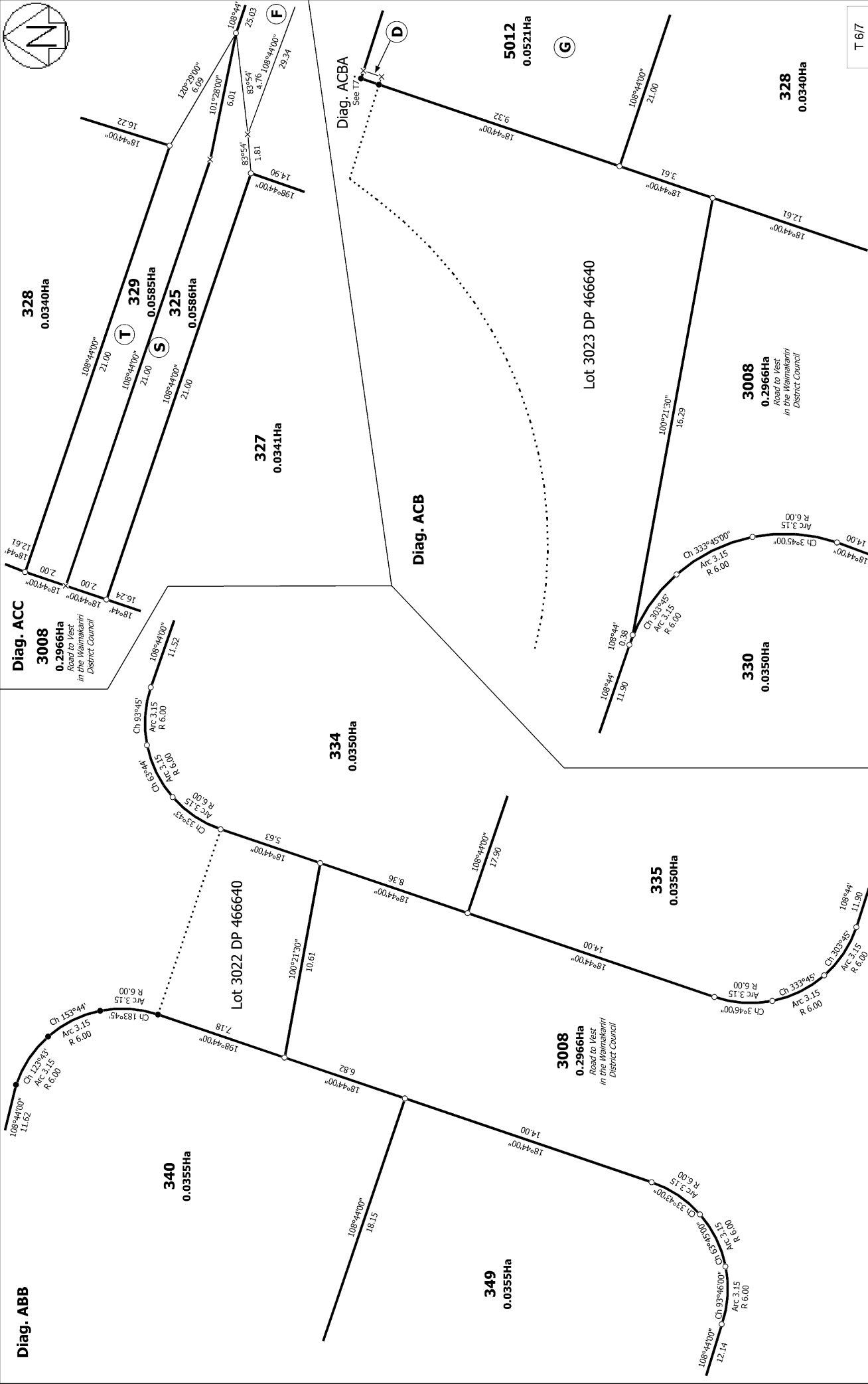
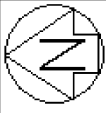
T 3/7

<p>Land District: Canterbury</p> <p>Digitally Generated Plan</p> <p>Generated on: 13/7/2018 08:15am Page 6 of 10</p>	<p>LOTS 312 - 349, 686 - 690, 3008 & 5012 BEING A SUBDIVISION OF LOT 1002</p> <p>DP 524167</p>	<p>Surveyor: Christopher Paul Hopper</p> <p>Firm: Davis Ogilvie & Partners Ltd (Christch)</p>	<p>Title Plan</p> <p>LT 528617</p>
---	--	---	--



T 47

<p>Land District: Canterbury</p> <p>Digitally Generated Plan</p> <p>Generated on: 13/07/2018 08:15am Page 7 of 10</p>	<p>LOTS 312 - 349, 686 - 690, 3008 & 5012 BEING A SUBDIVISION OF LOT 1002</p> <p>DP 524167</p>	<p>Surveyor: Christopher Paul Hopper</p> <p>Firm: Davis Ogilvie & Partners Ltd (Christcl)</p>	<p>Title Plan</p> <p>LT 528617</p>
--	--	---	--



<p>Land District: Canterbury</p> <p>Digitally Generated Plan</p> <p>Generated on: 13/7/2018 08:15am Page 9 of 10</p>	<p>LOTS 312 - 349, 686 - 690, 3008 & 5012 BEING A SUBDIVISION OF LOT 1002</p> <p>DP 524167</p>	<p>Surveyor: Christopher Paul Hopper</p> <p>Firm: Davis Ogilvie & Partners Ltd (Christcl)</p>	<p>Title Plan</p> <p>LT 528617</p>
---	---	---	---

