



Title Plan - LT 461956

Survey Number LT 461956
Surveyor Reference 29529 - Silverstream Stage 2A
Surveyor Russell Thomas Benge
Survey Firm Davis Ogilvie & Partners Ltd (Christchurch)
Surveyor Declaration I Russell Thomas Benge, being a licensed cadastral surveyor, certify that:
 (a) this dataset provided by me and its related survey are accurate, correct and in accordance with the Cadastral Survey Act 2002 and the Rules for Cadastral Survey 2010, and
 (b) the survey was undertaken by me or under my personal direction.
 Declared on 18 Apr 2013 04:38 PM

Survey Details

Dataset Description Lots 117-172, 193-201, 662-685, 2003, 2004, 3001, 3013, 4002, 4005, 4006, 5004-5006, 5012, 5013, 6002-6004, 7000 and 7003-7006 being a subdivision of Part Rural Section 14549, Section 1 SO 453503, Lot 7002 DP 453541, Lot 1 DP 67537, Lot 2 DP 67537, Part Rural Section 366A and Part Rural Section 381

Status Submitted

Land District Canterbury **Survey Class** Class A

Submitted Date 18/04/2013 **Survey Approval Date**
Deposit Date

Territorial Authorities

Waimakariri District

Comprised In

CT 585024
 CT CB39C/347
 CT CB20B/783
 CT CB19F/1019
 CT 614010

Created Parcels

Parcels	Parcel Intent	Area	CT Reference
Lot 4006 Deposited Plan 461956	Vesting on Deposit for Local Purpose Reserve	0.0050 Ha	614768
Area E Deposited Plan 461956	Easement		
Area G Deposited Plan 461956	Land Covenant		
Area A Deposited Plan 461956	Easement		
Area B Deposited Plan 461956	Easement		
Area C Deposited Plan 461956	Easement		
Area D Deposited Plan 461956	Easement		



Title Plan - LT 461956

Created Parcels

Parcels	Parcel Intent	Area	CT Reference
Lot 3013 Deposited Plan 461956	Vesting on Deposit for Road	0.0030 Ha	
Lot 5004 Deposited Plan 461956	Vesting on Deposit for Recreation Reserve (Territorial Authority)	0.7128 Ha	612205
Lot 7003 Deposited Plan 461956	Fee Simple Title	1.9687 Ha	612206
Lot 7000 Deposited Plan 461956	Fee Simple Title	1.3491 Ha	612207
Lot 7004 Deposited Plan 461956	Fee Simple Title	8.4028 Ha	612208
Lot 6002 Deposited Plan 461956	Vesting on Deposit for Local Purpose Reserve	0.5261 Ha	612209
Lot 6003 Deposited Plan 461956	Vesting on Deposit for Local Purpose Reserve	0.4300 Ha	612210
Lot 6004 Deposited Plan 461956	Vesting on Deposit for Local Purpose Reserve	0.0179 Ha	612211
Lot 2003 Deposited Plan 461956	Fee Simple Title	0.3775 Ha	612212
Lot 5005 Deposited Plan 461956	Vesting on Deposit for Recreation Reserve (Territorial Authority)	0.0863 Ha	612213
Lot 2004 Deposited Plan 461956	Fee Simple Title	0.1756 Ha	612214
Lot 5006 Deposited Plan 461956	Vesting on Deposit for Recreation Reserve (Territorial Authority)	0.0646 Ha	612215
Lot 7006 Deposited Plan 461956	Fee Simple Title	0.4986 Ha	612216
Lot 7005 Deposited Plan 461956	Fee Simple Title	0.0526 Ha	612217
Lot 5012 Deposited Plan 461956	Vesting on Deposit for Recreation Reserve (Territorial Authority)	0.0091 Ha	612218
Lot 5013 Deposited Plan 461956	Vesting on Deposit for Recreation Reserve (Territorial Authority)	0.0091 Ha	612219
Lot 3001 Deposited Plan 461956	Vesting on Deposit for Road	3.1874 Ha	
Lot 117 Deposited Plan 461956	Fee Simple Title	0.0350 Ha	612108
Lot 118 Deposited Plan 461956	Fee Simple Title	0.0320 Ha	612109
Lot 119 Deposited Plan 461956	Fee Simple Title	0.0320 Ha	612110
Lot 120 Deposited Plan 461956	Fee Simple Title	0.0310 Ha	612111
Lot 121 Deposited Plan 461956	Fee Simple Title	0.0310 Ha	612112
Lot 122 Deposited Plan 461956	Fee Simple Title	0.0310 Ha	612113
Lot 123 Deposited Plan 461956	Fee Simple Title	0.0340 Ha	612114
Lot 124 Deposited Plan 461956	Fee Simple Title	0.0320 Ha	612115
Lot 125 Deposited Plan 461956	Fee Simple Title	0.0300 Ha	612116



Title Plan - LT 461956

Created Parcels

Parcels	Parcel Intent	Area	CT Reference
Lot 126 Deposited Plan 461956	Fee Simple Title	0.0300 Ha	612117
Lot 127 Deposited Plan 461956	Fee Simple Title	0.0326 Ha	612118
Lot 128 Deposited Plan 461956	Fee Simple Title	0.0327 Ha	612119
Lot 129 Deposited Plan 461956	Fee Simple Title	0.0300 Ha	612120
Lot 130 Deposited Plan 461956	Fee Simple Title	0.0300 Ha	612121
Lot 131 Deposited Plan 461956	Fee Simple Title	0.0320 Ha	612122
Lot 132 Deposited Plan 461956	Fee Simple Title	0.0312 Ha	612123
Lot 133 Deposited Plan 461956	Fee Simple Title	0.0320 Ha	612124
Lot 134 Deposited Plan 461956	Fee Simple Title	0.0312 Ha	612125
Lot 135 Deposited Plan 461956	Fee Simple Title	0.0330 Ha	612126
Lot 136 Deposited Plan 461956	Fee Simple Title	0.0350 Ha	612127
Lot 137 Deposited Plan 461956	Fee Simple Title	0.0360 Ha	612128
Lot 138 Deposited Plan 461956	Fee Simple Title	0.0351 Ha	612129
Lot 139 Deposited Plan 461956	Fee Simple Title	0.0340 Ha	612130
Lot 140 Deposited Plan 461956	Fee Simple Title	0.0350 Ha	612131
Lot 141 Deposited Plan 461956	Fee Simple Title	0.0357 Ha	612132
Lot 142 Deposited Plan 461956	Fee Simple Title	0.0338 Ha	612133
Lot 143 Deposited Plan 461956	Fee Simple Title	0.0340 Ha	612134
Lot 144 Deposited Plan 461956	Fee Simple Title	0.0356 Ha	612135
Lot 145 Deposited Plan 461956	Fee Simple Title	0.0374 Ha	612136
Lot 146 Deposited Plan 461956	Fee Simple Title	0.0340 Ha	612137
Lot 147 Deposited Plan 461956	Fee Simple Title	0.0340 Ha	612138
Lot 148 Deposited Plan 461956	Fee Simple Title	0.0350 Ha	612139
Lot 149 Deposited Plan 461956	Fee Simple Title	0.0305 Ha	612140
Lot 150 Deposited Plan 461956	Fee Simple Title	0.0305 Ha	612141
Lot 151 Deposited Plan 461956	Fee Simple Title	0.0305 Ha	612142
Lot 152 Deposited Plan 461956	Fee Simple Title	0.0360 Ha	612143
Lot 153 Deposited Plan 461956	Fee Simple Title	0.0387 Ha	612144
Lot 154 Deposited Plan 461956	Fee Simple Title	0.0334 Ha	612145
Lot 155 Deposited Plan 461956	Fee Simple Title	0.0330 Ha	612146
Lot 156 Deposited Plan 461956	Fee Simple Title	0.0320 Ha	612147
Lot 157 Deposited Plan 461956	Fee Simple Title	0.0396 Ha	612148
Lot 158 Deposited Plan 461956	Fee Simple Title	0.0400 Ha	612149
Lot 159 Deposited Plan 461956	Fee Simple Title	0.0340 Ha	612150
Lot 160 Deposited Plan 461956	Fee Simple Title	0.0340 Ha	612151
Lot 161 Deposited Plan 461956	Fee Simple Title	0.0408 Ha	612152
Lot 162 Deposited Plan 461956	Fee Simple Title	0.0319 Ha	612153
Lot 163 Deposited Plan 461956	Fee Simple Title	0.0300 Ha	612154
Lot 164 Deposited Plan 461956	Fee Simple Title	0.0300 Ha	612155



Title Plan - LT 461956

Created Parcels

Parcels	Parcel Intent	Area	CT Reference
Lot 165 Deposited Plan 461956	Fee Simple Title	0.0330 Ha	612156
Lot 166 Deposited Plan 461956	Fee Simple Title	0.0380 Ha	612157
Lot 167 Deposited Plan 461956	Fee Simple Title	0.0348 Ha	612158
Lot 168 Deposited Plan 461956	Fee Simple Title	0.0360 Ha	612159
Lot 169 Deposited Plan 461956	Fee Simple Title	0.0330 Ha	612160
Lot 170 Deposited Plan 461956	Fee Simple Title	0.0325 Ha	612161
Lot 171 Deposited Plan 461956	Fee Simple Title	0.0339 Ha	612162
Lot 172 Deposited Plan 461956	Fee Simple Title	0.0360 Ha	612163
Lot 193 Deposited Plan 461956	Fee Simple Title	0.0341 Ha	612164
Lot 194 Deposited Plan 461956	Fee Simple Title	0.0330 Ha	612165
Lot 195 Deposited Plan 461956	Fee Simple Title	0.0400 Ha	612166
Lot 196 Deposited Plan 461956	Fee Simple Title	0.0425 Ha	612167
Lot 197 Deposited Plan 461956	Fee Simple Title	0.0300 Ha	612168
Lot 198 Deposited Plan 461956	Fee Simple Title	0.0300 Ha	612169
Lot 199 Deposited Plan 461956	Fee Simple Title	0.0387 Ha	612170
Lot 200 Deposited Plan 461956	Fee Simple Title	0.0387 Ha	612171
Lot 201 Deposited Plan 461956	Fee Simple Title	0.0375 Ha	612172
Lot 662 Deposited Plan 461956	Fee Simple Title	0.0425 Ha	612173
Lot 663 Deposited Plan 461956	Fee Simple Title	0.0450 Ha	612174
Lot 664 Deposited Plan 461956	Fee Simple Title	0.0400 Ha	612175
Lot 665 Deposited Plan 461956	Fee Simple Title	0.0400 Ha	612176
Lot 666 Deposited Plan 461956	Fee Simple Title	0.0451 Ha	612177
Lot 667 Deposited Plan 461956	Fee Simple Title	0.0425 Ha	612178
Lot 668 Deposited Plan 461956	Fee Simple Title	0.0437 Ha	612179
Lot 669 Deposited Plan 461956	Fee Simple Title	0.0436 Ha	612180
Lot 670 Deposited Plan 461956	Fee Simple Title	0.0375 Ha	612181
Lot 671 Deposited Plan 461956	Fee Simple Title	0.0376 Ha	612182
Lot 672 Deposited Plan 461956	Fee Simple Title	0.0390 Ha	612183
Lot 673 Deposited Plan 461956	Fee Simple Title	0.0406 Ha	612184
Lot 674 Deposited Plan 461956	Fee Simple Title	0.0400 Ha	612185
Lot 675 Deposited Plan 461956	Fee Simple Title	0.0504 Ha	612186
Lot 676 Deposited Plan 461956	Fee Simple Title	0.0423 Ha	612188
Lot 677 Deposited Plan 461956	Fee Simple Title	0.0414 Ha	612189
Lot 678 Deposited Plan 461956	Fee Simple Title	0.0400 Ha	612190
Lot 679 Deposited Plan 461956	Fee Simple Title	0.0400 Ha	612191
Lot 680 Deposited Plan 461956	Fee Simple Title	0.0400 Ha	612192
Lot 681 Deposited Plan 461956	Fee Simple Title	0.0375 Ha	612193
Lot 682 Deposited Plan 461956	Fee Simple Title	0.0332 Ha	612194
Lot 683 Deposited Plan 461956	Fee Simple Title	0.0328 Ha	612195



Title Plan - LT 461956

Created Parcels

Parcels	Parcel Intent	Area	CT Reference
Lot 684 Deposited Plan 461956	Fee Simple Title	0.0360 Ha	612196
Lot 685 Deposited Plan 461956	Fee Simple Title	0.0415 Ha	612197
Lot 4002 Deposited Plan 461956	Fee Simple Title	0.3260 Ha	612220
Area F Deposited Plan 461956	Easement		
Area H Deposited Plan 461956	Land Covenant		
Area I Deposited Plan 461956	Land Covenant		
Area J Deposited Plan 461956	Land Covenant		
Area K Deposited Plan 461956	Land Covenant		
Area L Deposited Plan 461956	Land Covenant		
Area M Deposited Plan 461956	Land Covenant		
Area N Deposited Plan 461956	Land Covenant		
Area O Deposited Plan 461956	Land Covenant		
Area P Deposited Plan 461956	Land Covenant		
Area Q Deposited Plan 461956	Land Covenant		
Area R Deposited Plan 461956	Land Covenant		
Area S Deposited Plan 461956	Land Covenant		
Area T Deposited Plan 461956	Land Covenant		
Area U Deposited Plan 461956	Land Covenant		
Area V Deposited Plan 461956	Land Covenant		
Area W Deposited Plan 461956	Land Covenant		
Area X Deposited Plan 461956	Land Covenant		
Area Y Deposited Plan 461956	Land Covenant		
Area Z Deposited Plan 461956	Land Covenant		
Area AA Deposited Plan 461956	Land Covenant		
Area AB Deposited Plan 461956	Land Covenant		
Area AC Deposited Plan 461956	Land Covenant		
Area AD Deposited Plan 461956	Land Covenant		
Area AE Deposited Plan 461956	Land Covenant		
Area AF Deposited Plan 461956	Land Covenant		
Area AG Deposited Plan 461956	Land Covenant		
Area AH Deposited Plan 461956	Land Covenant		
Area AI Deposited Plan 461956	Land Covenant		
Area AJ Deposited Plan 461956	Land Covenant		
Area AK Deposited Plan 461956	Land Covenant		
Area AL Deposited Plan 461956	Land Covenant		
Area AM Deposited Plan 461956	Land Covenant		
Area AN Deposited Plan 461956	Land Covenant		
Area AO Deposited Plan 461956	Land Covenant		
Area AP Deposited Plan 461956	Land Covenant		



Title Plan - LT 461956

Created Parcels

Parcels	Parcel Intent	Area	CT Reference
Area AQ Deposited Plan 461956	Land Covenant		
Area AR Deposited Plan 461956	Land Covenant		
Area AS Deposited Plan 461956	Land Covenant		
Area AT Deposited Plan 461956	Land Covenant		
Area AU Deposited Plan 461956	Land Covenant		
Area AV Deposited Plan 461956	Land Covenant		
Area AW Deposited Plan 461956	Land Covenant		
Area AX Deposited Plan 461956	Land Covenant		
Area AY Deposited Plan 461956	Land Covenant		
Area AZ Deposited Plan 461956	Land Covenant		
Area BA Deposited Plan 461956	Land Covenant		
Area BB Deposited Plan 461956	Land Covenant		
Area BC Deposited Plan 461956	Land Covenant		
Area BD Deposited Plan 461956	Land Covenant		
Area BE Deposited Plan 461956	Land Covenant		
Area BF Deposited Plan 461956	Land Covenant		
Area BG Deposited Plan 461956	Land Covenant		
Area BH Deposited Plan 461956	Land Covenant		
Lot 4005 Deposited Plan 461956	Vesting on Deposit for Local Purpose Reserve	0.0044 Ha	612108
Total Area		<u>21.3827 Ha</u>	

Schedule / Memorandum

Land Registration District
Canterbury

Plan Number
DP 461956

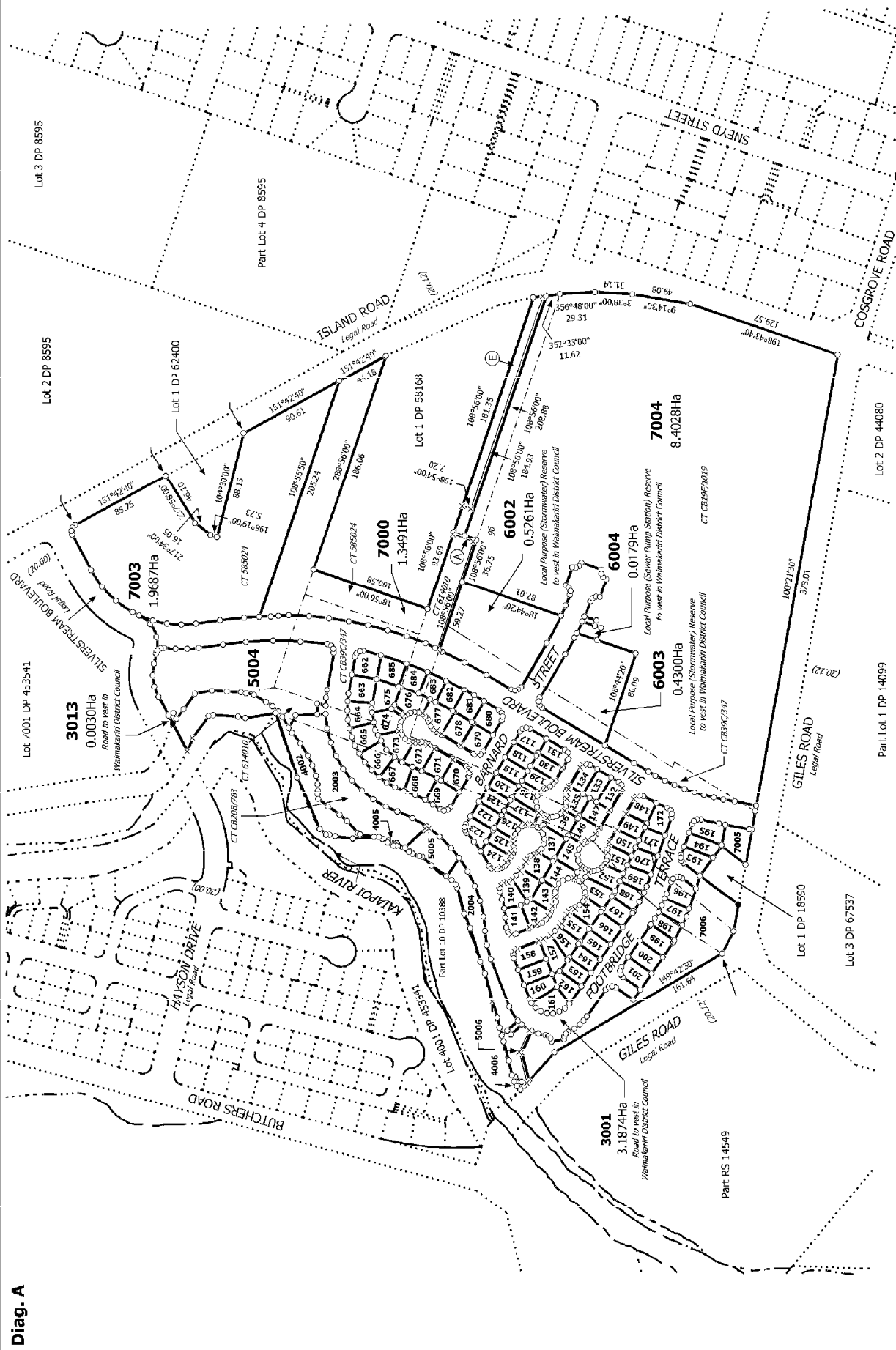
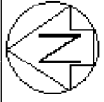
Territorial Authority (the Council)
Waimakariri District



Memorandum of Easements in Gross (Pursuant to s243 Resource Management Act 1991)			
Purpose	Shown	Servient Tenement	Grantee
Right to convey electricity in gross	A	Lot 7000	Mainpower New Zealand Limited
Right of way in gross	E	Lot 7000	Transpower (NZ) Limited

Proposed Easements in Gross			
Purpose	Shown	Servient Tenement	Grantee
Right to convey electricity in gross	B	Lot 5012	Mainpower New Zealand Limited
	C	Lot 5013	
	D	Lot 5006	
Right to convey telecommunications & computer media in gross	F	Lot 5005	Chorus New Zealand Limited

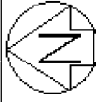
Areas G, H, I, J, K, L, M, N, O, P, Q, R, S, T, U, V, W, X, Y, Z, AA, AB, AC, AD, AE, AF, AG, AH, AI, AJ, AK, AL, AM, AN, AO, AP, AQ, AR, AS, AT, AU, AV, AW, AX, AY, AZ, BA, BB, BC, BD, BE, BF, BG and BH are subject to a consent notice.



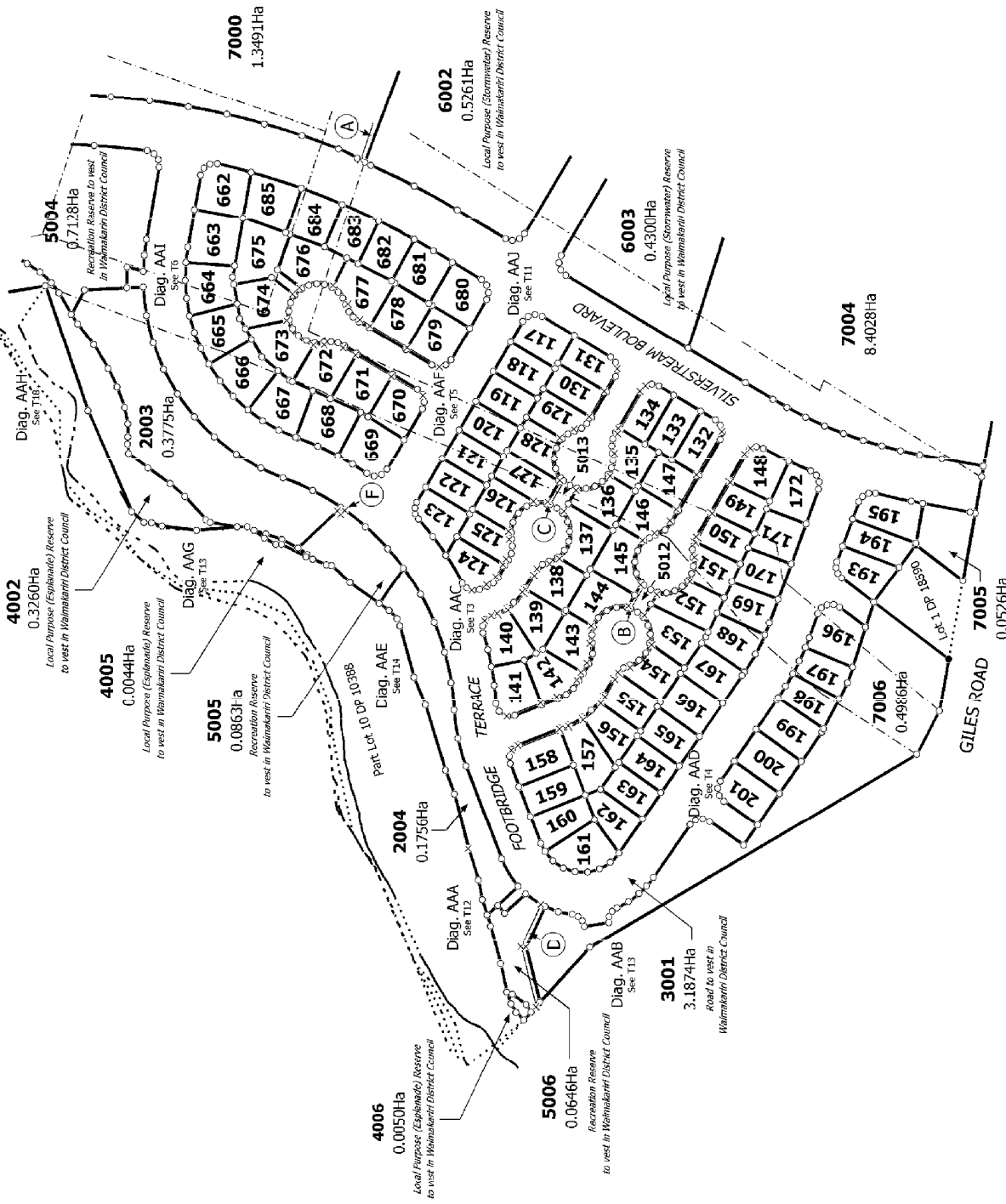
T 1/20

<p>Land District: Canterbury</p> <p>Digitally Generated Plan</p> <p>Generated on: 18/04/2013 4:33pm Page 9 of 27</p>	<p>Surveyor: Russell Thomas Bengie</p> <p>Firm: Davis Ogilvie & Partners Ltd (Christchurch)</p>	<p>Title Plan</p> <p>LT 461956</p> <p>Lots 117-172, 193-201, 662-685, 2003, 2004, 3001, 3013, 4002, 4005, 4006, 5004-5006, 5012, 5013, 6002-6004, 7000 and 7003-7006 being a subdivision of Part Rural Section 14549, Section 1 SO 453503, Lot 7002 DP 453541, Lot 1 DP</p>
--	---	---

Diag. A



Diag. AA



T 2/20

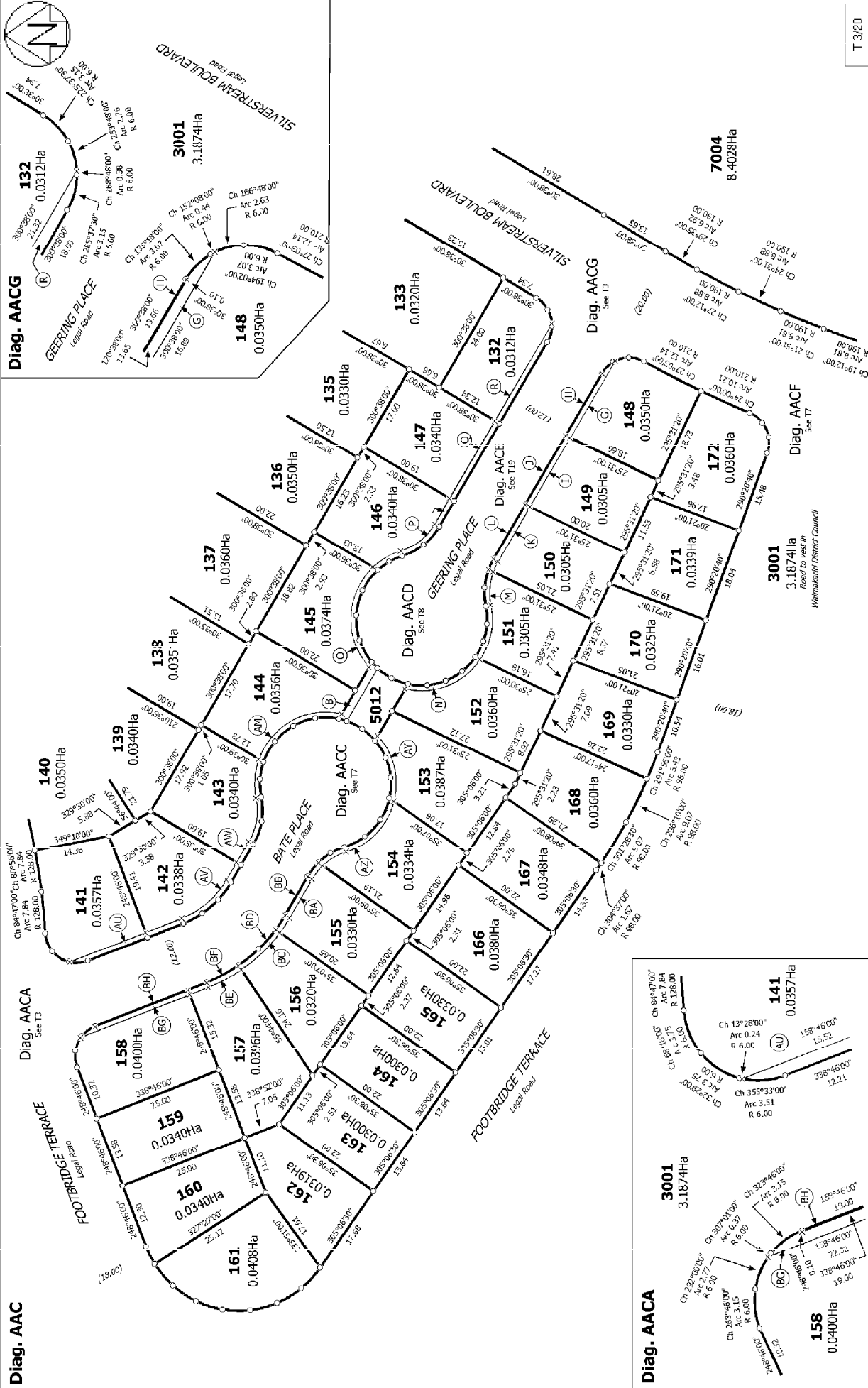
Land District: Canterbury
Digitally Generated Plan
Generated on: 18/04/2013 4:30pm Page 3 of 27

Lots 117-172, 193-201, 662-685, 2003, 2004, 3001, 3013, 4002, 4005, 4006, 5004-5006, 5012, 5013, 6002-6004, 7000 and 7003-7006 being a subdivision of Part Rural Section 14549, Section 1 SO 453503, Lot 7002 DP 453541, Lot 1 DP

Surveyor: Russell Thomas Bengie
Firm: Davis Ogilvie & Partners Ltd (Christchurch)

Title Plan
LT 461956

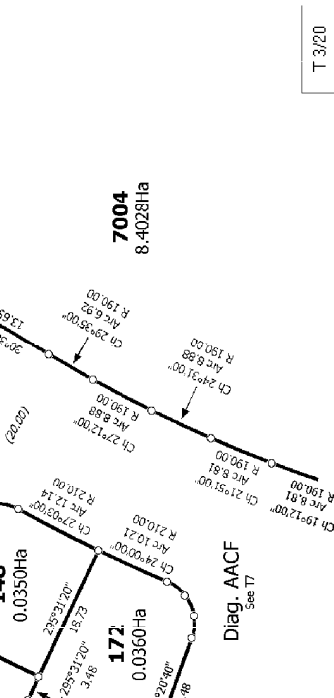
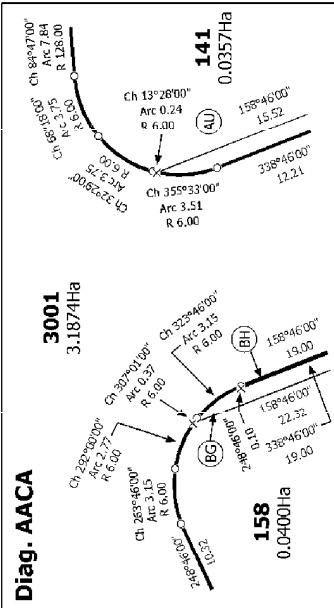


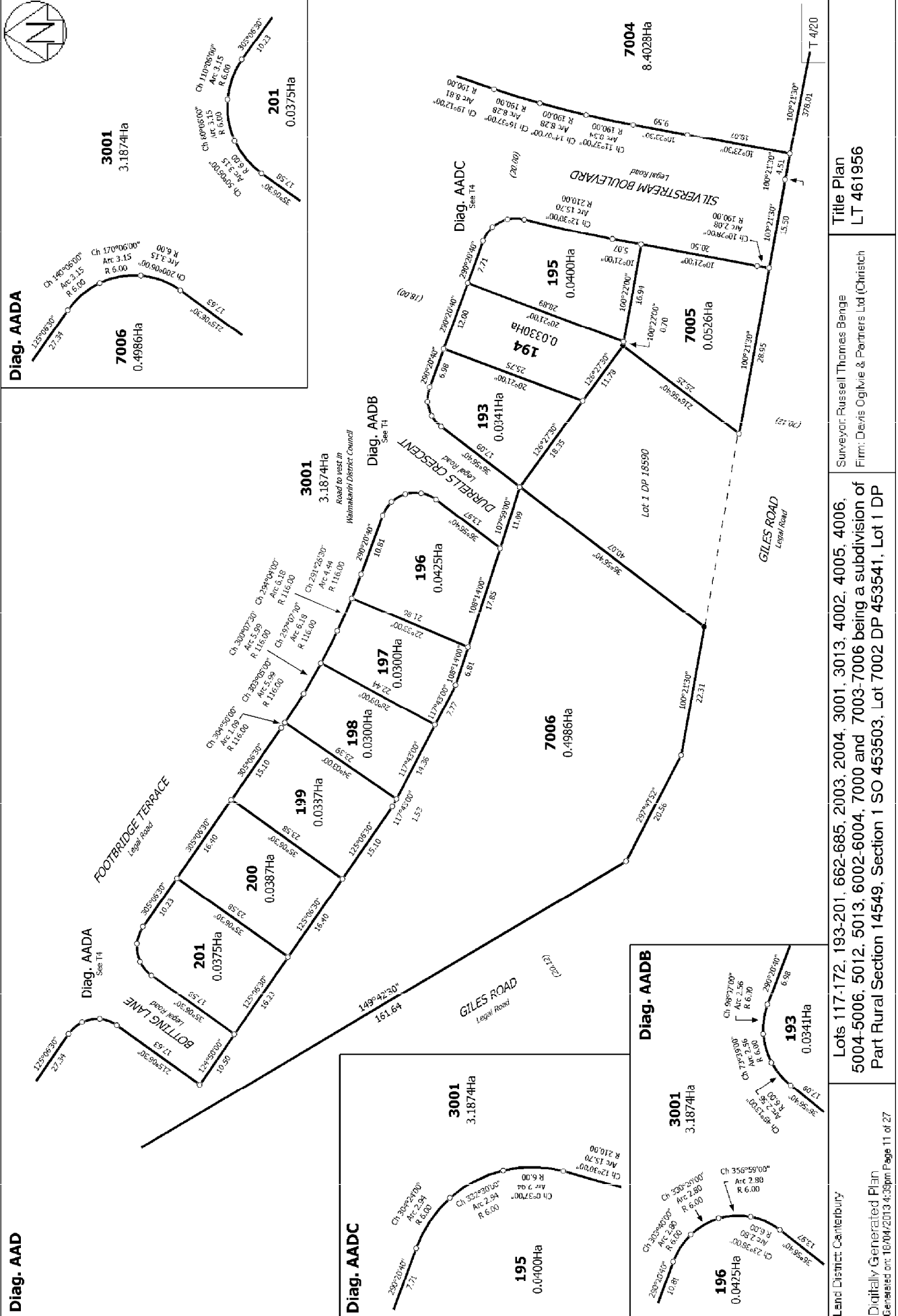


T 3/20

<p>Land District: Canterbury</p> <p>Digitally Generated Plan Generated on: 18/04/2013 4:35pm Page 10 of 27</p>	<p>Surveyor: Russell Thomas Benghe Firm: Davis Ogilvie & Partners Ltd (Christchurch)</p>	<p>Title Plan LT 461956</p>
--	--	---------------------------------

Lots 117-172, 193-201, 662-685, 2003, 2004, 3001, 3013, 4002, 4005, 4006, 5004-5006, 5012, 5013, 6002-6004, 7000 and 7003-7006 being a subdivision of Part Rural Section 14549, Section 1 SO 453503, Lot 7002 DP 453541, Lot 1 DP



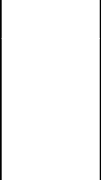
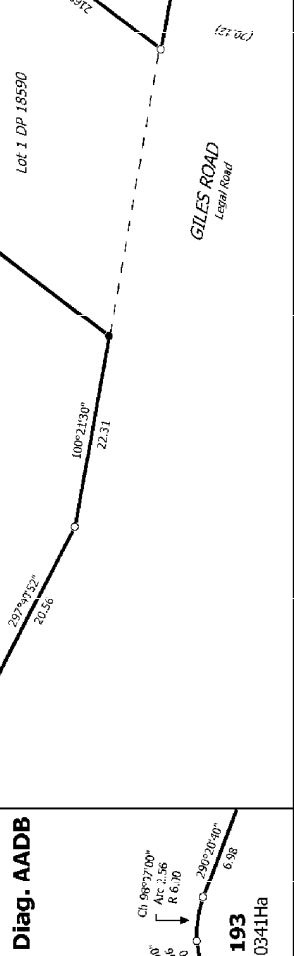
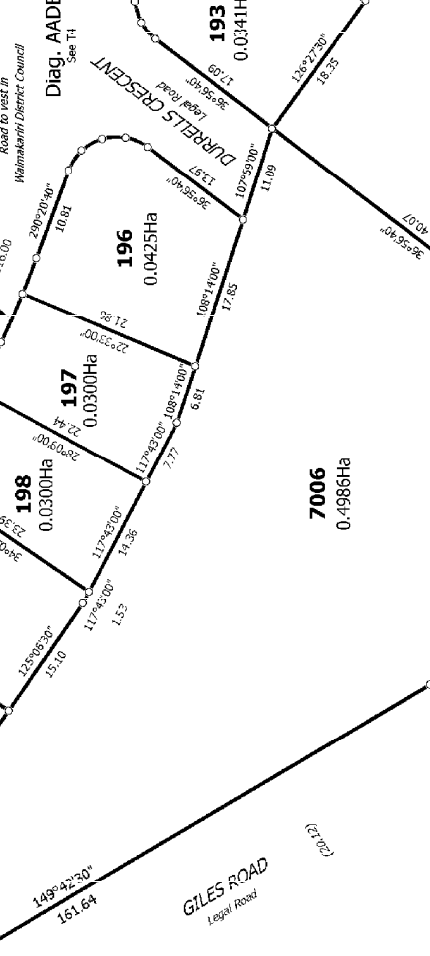
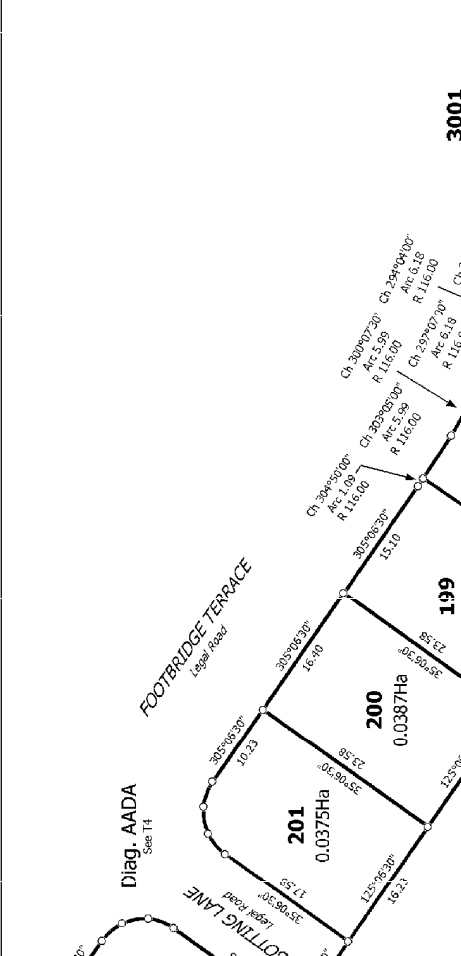
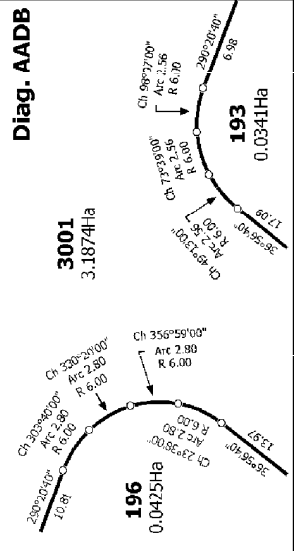
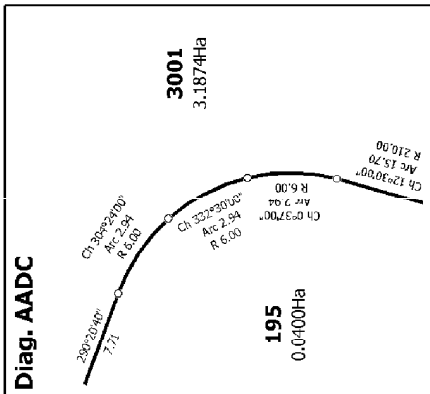
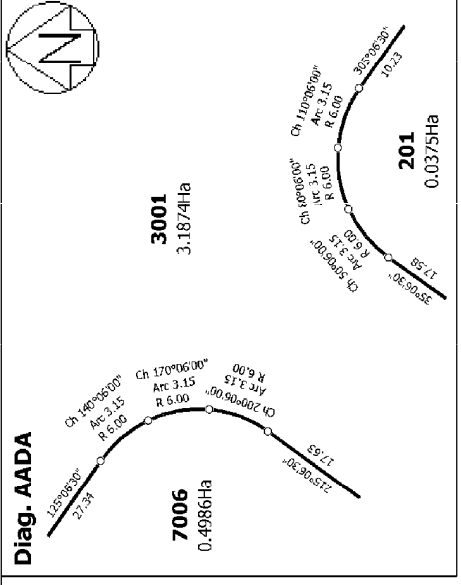


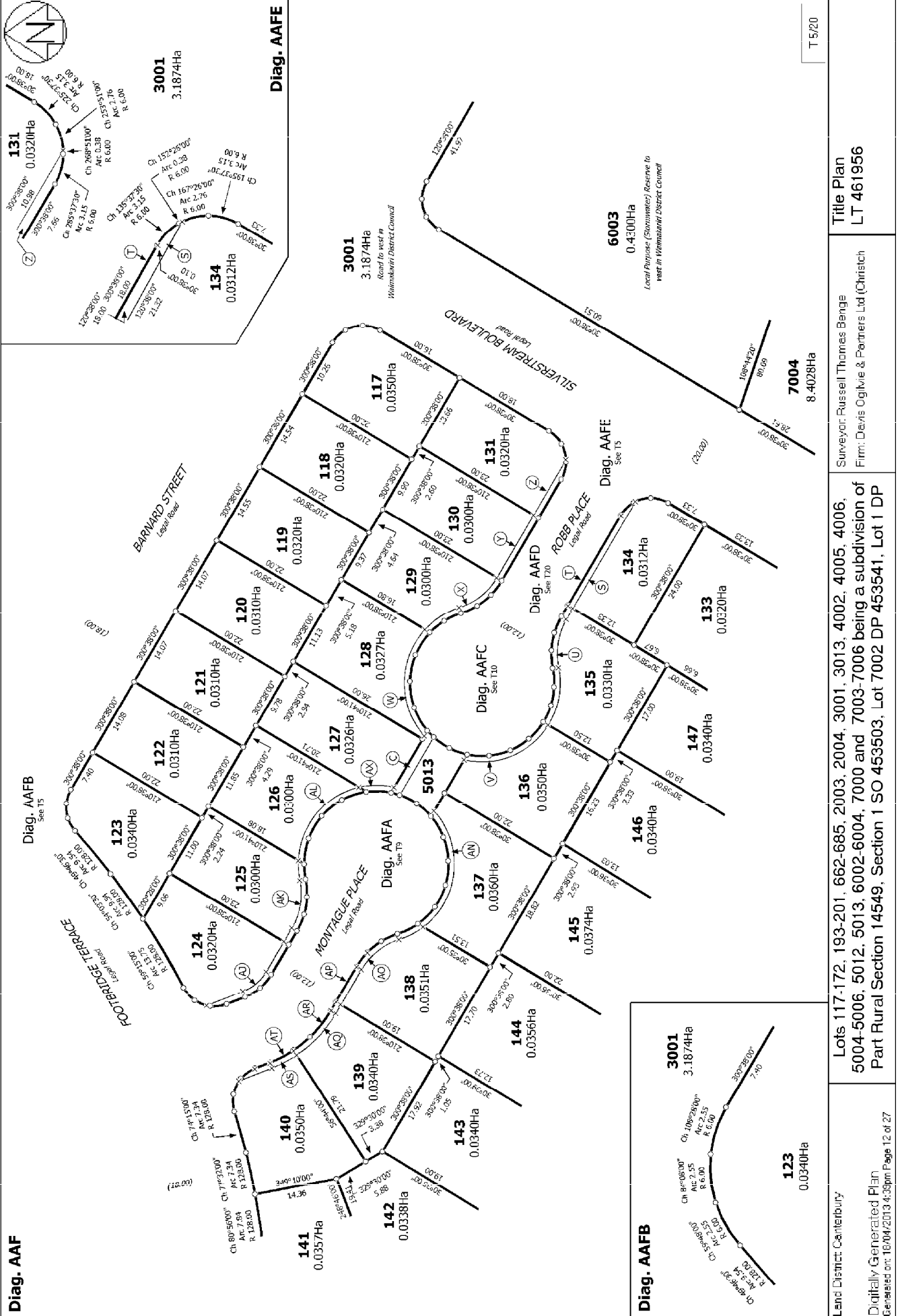
Land District: Canterbury
 Digitally Generated Plan
 Generated on: 18/04/2013 4:30pm Page 11 of 27

Lots 117-172, 193-201, 662-685, 2003, 2004, 3001, 3013, 4002, 4005, 4006, 5004-5006, 5012, 5013, 6002-6004, 7000 and 7003-7006 being a subdivision of Part Rural Section 14549, Section 1 SO 453503, Lot 7002 DP 453541, Lot 1 DP

Surveyor: Russell Thomas Bengie
 Firm: Devis Ogilvie & Partners Ltd (Christchurch)

Title Plan
 LT 461956





Diag. AAF

Diag. AAFB

Diag. AAFE



Land District: Canterbury
 Digitally Generated Plan
 Generated on: 18/04/2013 4:30pm Page 12 of 27

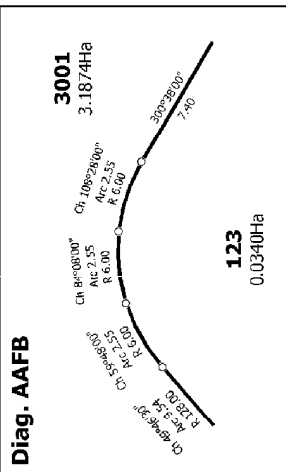
Lots 117-172, 193-201, 662-685, 2003, 2004, 3001, 3013, 4002, 4005, 4006, 5004-5006, 5012, 5013, 6002-6004, 7000 and 7003-7006 being a subdivision of Part Rural Section 14549, Section 1 SO 453503, Lot 7002 DP 453541, Lot 1 DP

Surveyor: Russell Thomas Bengie
 Firm: Davis Ogilvie & Partners Ltd (Christchurch)

Title Plan
 LT 461956

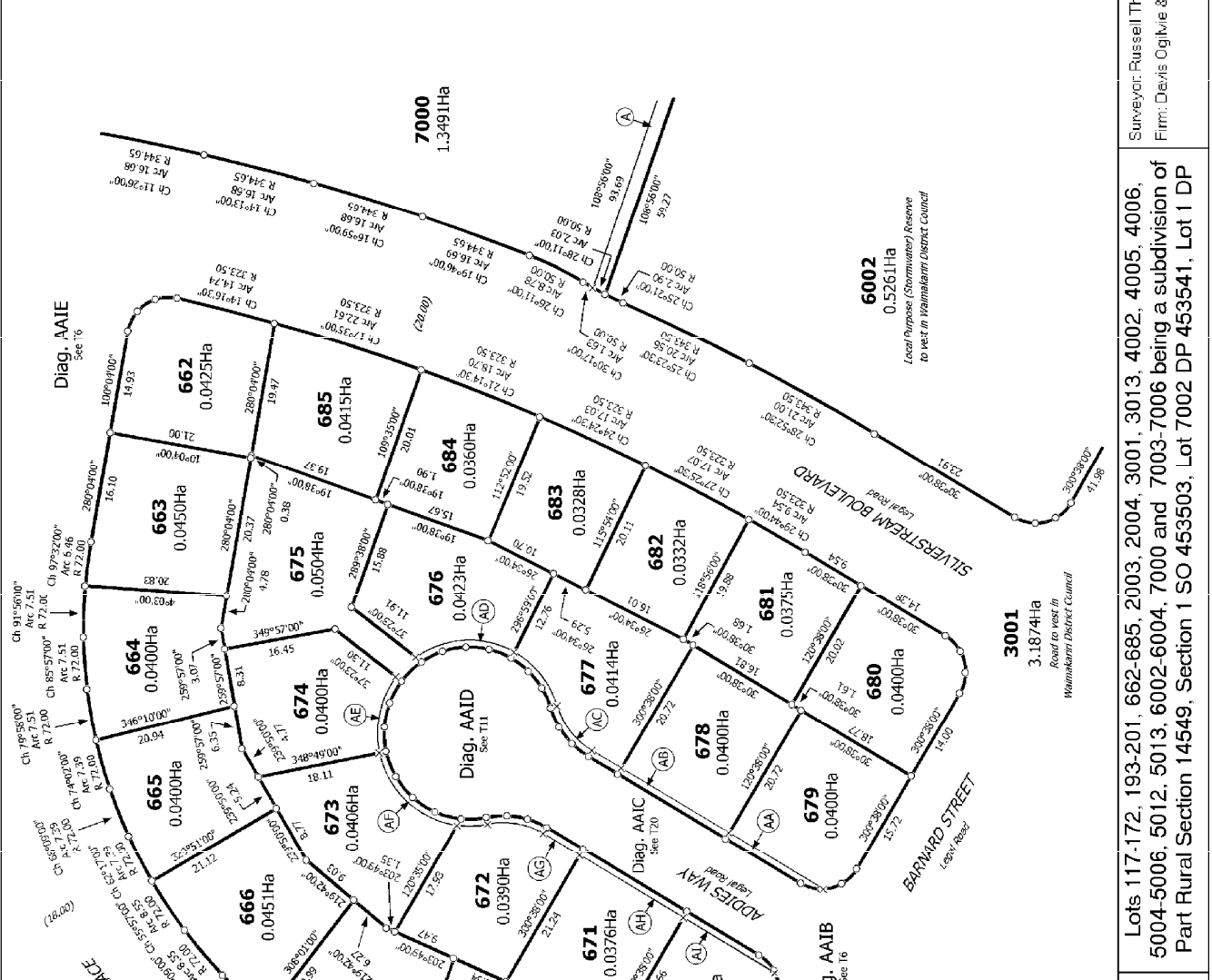
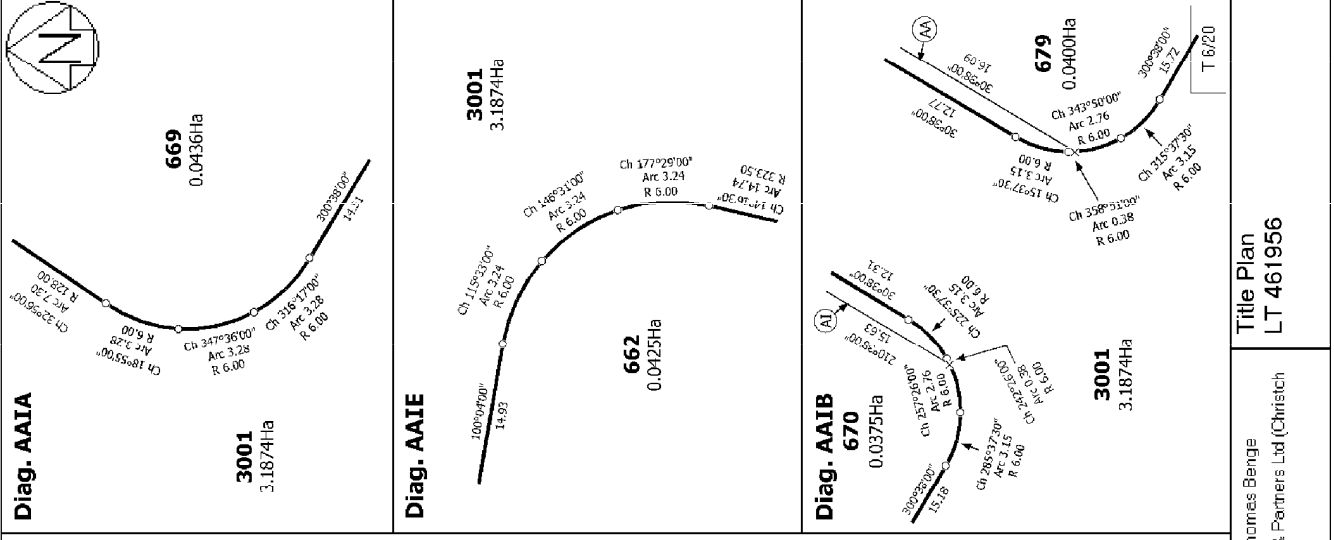
T 5/20

Diag. AAFB



Diag. AAFE





Diag. AAI
 Parcel 662: 0.0425Ha
 Parcel 663: 0.0450Ha
 Parcel 664: 0.0400Ha
 Parcel 665: 0.0400Ha
 Parcel 666: 0.0451Ha
 Parcel 667: 0.0425Ha
 Parcel 668: 0.0437Ha
 Parcel 669: 0.04361Ha
 Parcel 670: 0.0375Ha
 Parcel 671: 0.0376Ha
 Parcel 672: 0.0390Ha
 Parcel 673: 0.0406Ha
 Parcel 674: 0.0400Ha
 Parcel 675: 0.0504Ha
 Parcel 676: 0.0423Ha
 Parcel 677: 0.0414Ha
 Parcel 678: 0.0400Ha
 Parcel 679: 0.0400Ha
 Parcel 680: 0.0400Ha
 Parcel 681: 0.0375Ha
 Parcel 682: 0.0332Ha
 Parcel 683: 0.0328Ha
 Parcel 684: 0.0360Ha
 Parcel 685: 0.0415Ha
 Parcel 686: 0.0425Ha

Diag. AAID
 Parcel 7000: 1.3491Ha

Diag. AAIB
 Parcel 6002: 0.5261Ha
 Parcel 3001: 3.1874Ha

Diag. AAIE
 Parcel 662: 0.0425Ha
 Parcel 663: 0.0450Ha
 Parcel 664: 0.0400Ha
 Parcel 665: 0.0400Ha
 Parcel 666: 0.0451Ha
 Parcel 667: 0.0425Ha
 Parcel 668: 0.0437Ha
 Parcel 669: 0.04361Ha
 Parcel 670: 0.0375Ha
 Parcel 671: 0.0376Ha
 Parcel 672: 0.0390Ha
 Parcel 673: 0.0406Ha
 Parcel 674: 0.0400Ha
 Parcel 675: 0.0504Ha
 Parcel 676: 0.0423Ha
 Parcel 677: 0.0414Ha
 Parcel 678: 0.0400Ha
 Parcel 679: 0.0400Ha
 Parcel 680: 0.0400Ha
 Parcel 681: 0.0375Ha
 Parcel 682: 0.0332Ha
 Parcel 683: 0.0328Ha
 Parcel 684: 0.0360Ha
 Parcel 685: 0.0415Ha
 Parcel 686: 0.0425Ha

Diag. AAIB
 Parcel 6002: 0.5261Ha
 Parcel 3001: 3.1874Ha

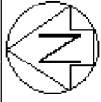
Land District: Canterbury

Digitally Generated Plan
 Generated on: 18/04/2013 4:36pm Page 13 of 27

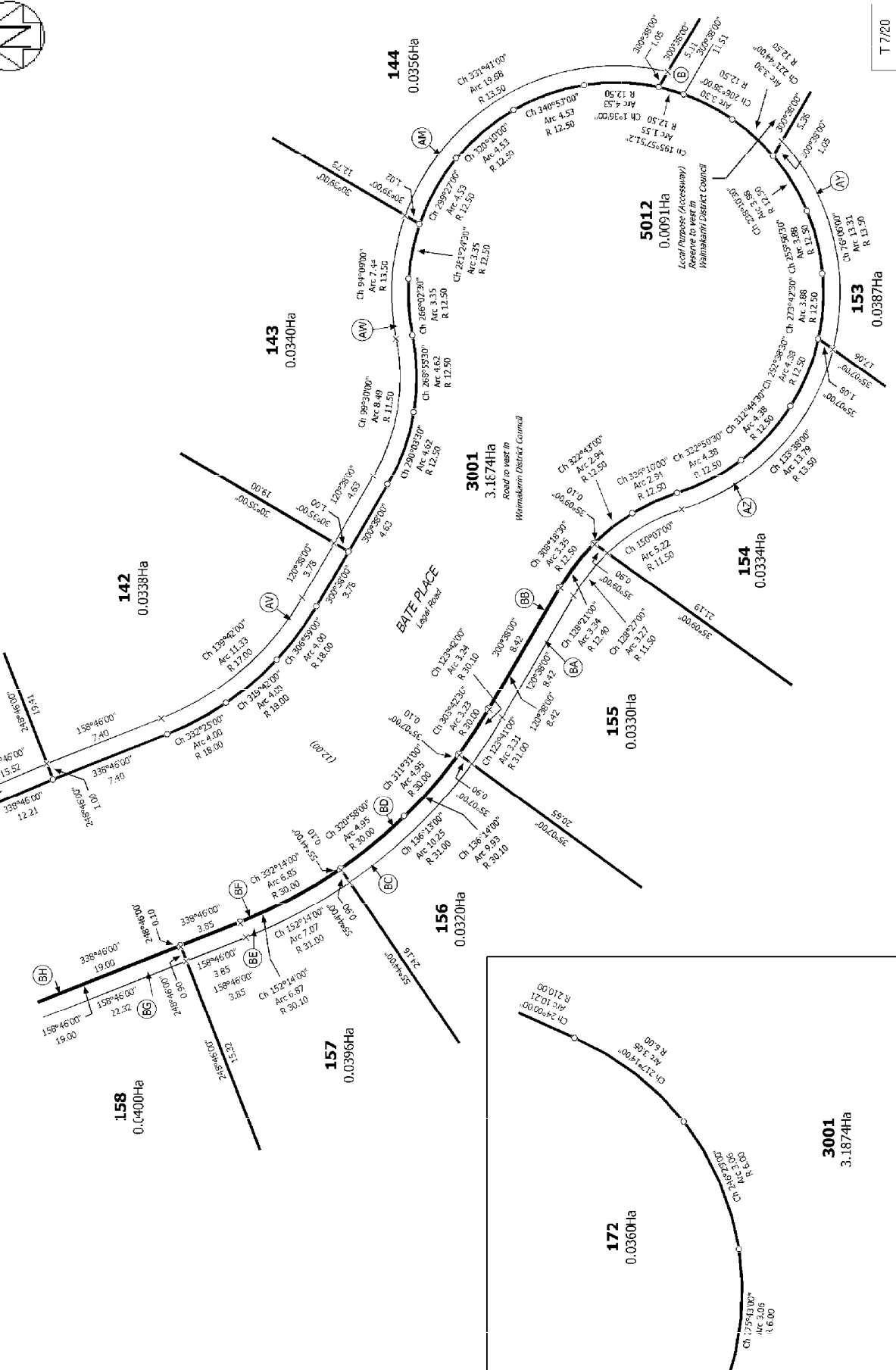
Title Plan
 LT 461956

Surveyor: Russell Thomas Bengie
Firm: Davis Ogilvie & Partners Ltd (Christchurch)

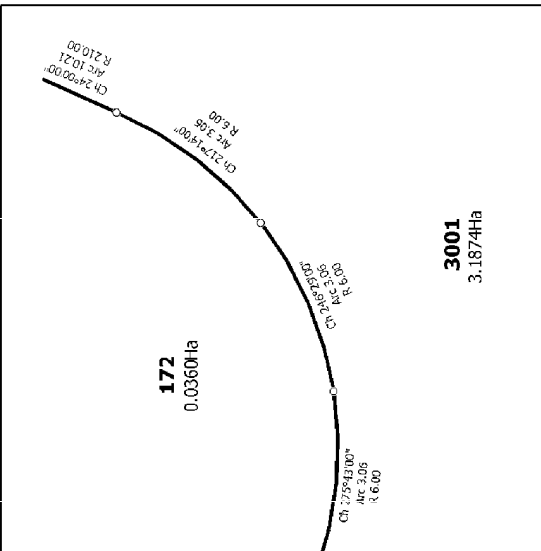
Lots 117-172, 193-201, 662-685, 2003, 2004, 3001, 3013, 4002, 4005, 4006, 5004-5006, 5012, 5013, 6002-6004, 7000 and 7003-7006 being a subdivision of Part Rural Section 14549, Section 1 SO 453503, Lot 7002 DP 453541, Lot 1 DP



Diag. AACCC

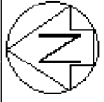


Diag. AACF

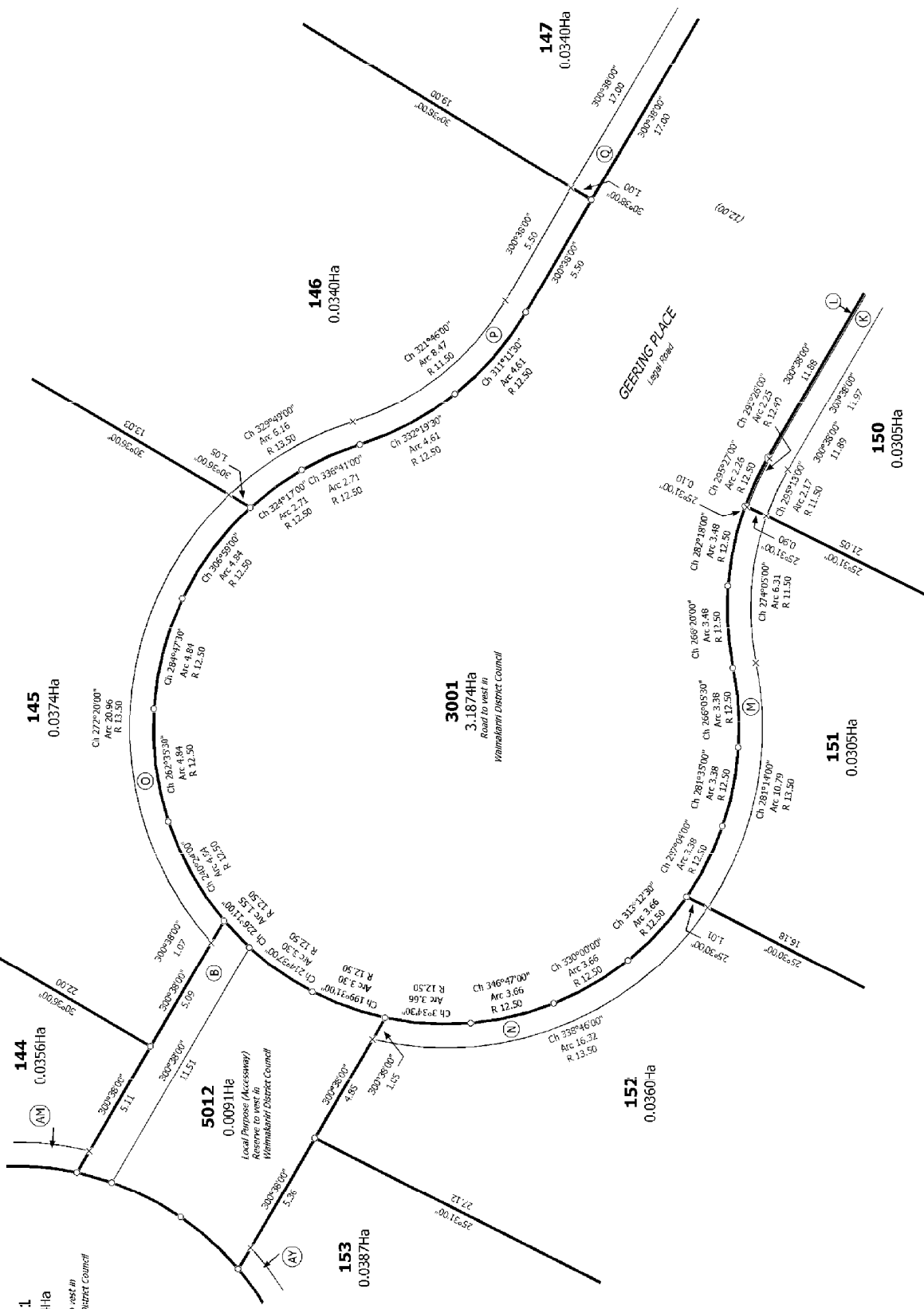


T 7120	Title Plan LT 461956	Surveyor: Russell Thomas Bengie Firm: Davis Ogilvie & Partners Ltd (Christchurch)	Lots 117-172, 193-201, 662-685, 2003, 2004, 3001, 3013, 4002, 4005, 4006, 5004-5006, 5012, 5013, 6002-6004, 7000 and 7003-7006 being a subdivision of Part Rural Section 14549, Section 1 SO 453503, Lot 7002 DP 453541, Lot 1 DP	Land District: Canterbury Digitally Generated Plan Generated on: 18/04/2013 4:35pm Page 14 of 27
--------	---------------------------------------	--	---	--



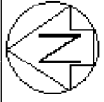


Diag. AACD

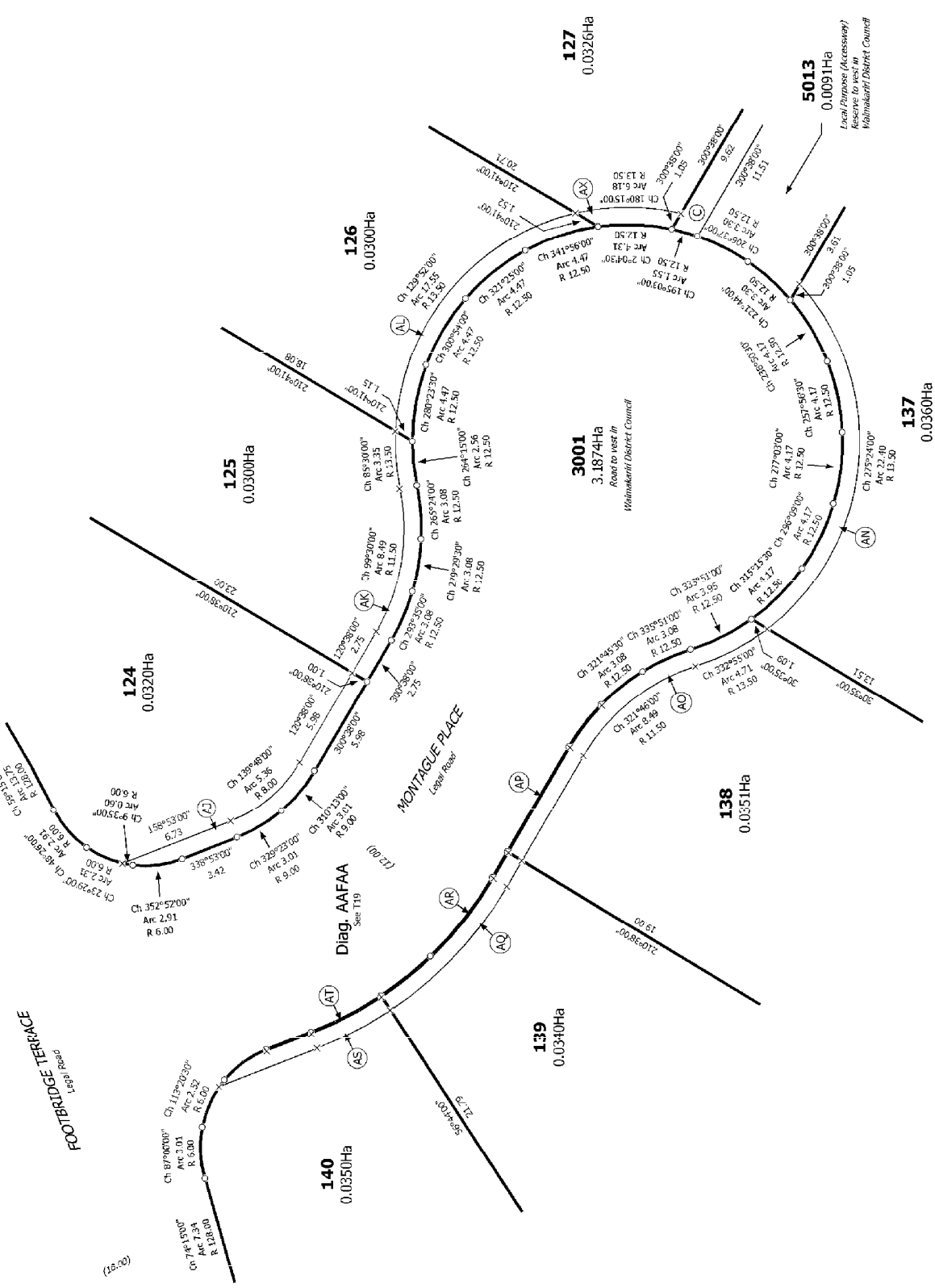


T 8/20

Land District: Canterbury	Lots 117-172, 193-201, 662-685, 2003, 2004, 3001, 3013, 4002, 4005, 4006, 5004-5006, 5012, 5013, 6002-6004, 7000 and 7003-7006 being a subdivision of Part Rural Section 14549, Section 1 SO 453503, Lot 7002 DP 453541, Lot 1 DP	Surveyor: Russell Thomas Bengie Firm: Davis Ogilvie & Partners Ltd (Christchurch)	Title Plan LT 461956
---------------------------	---	--	-------------------------



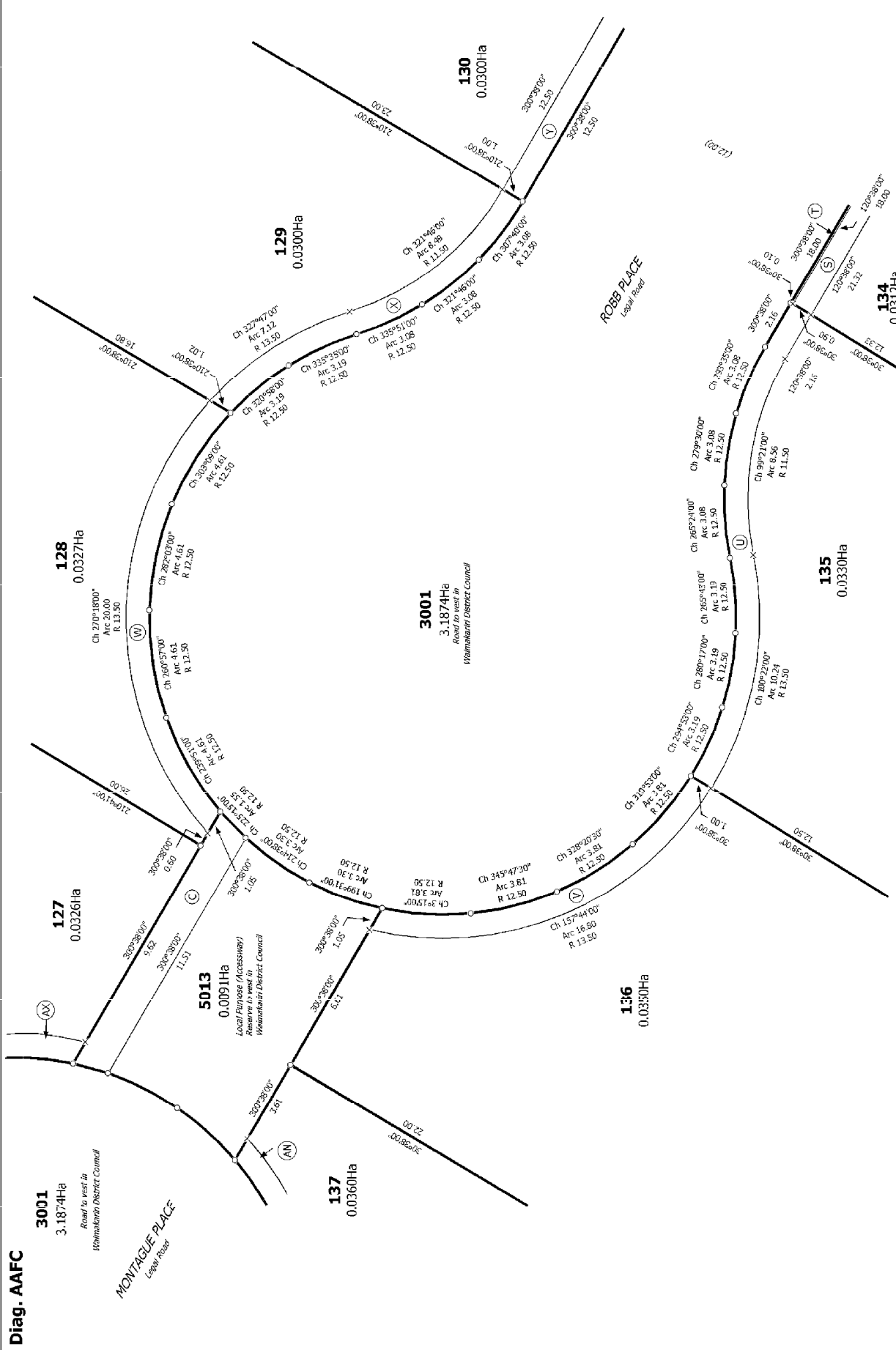
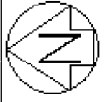
Diag. AAFA



T 9/20

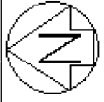
<p>Land District: Canterbury Digitally Generated Plan Generated on: 18/04/2013 4:35pm Page 16 of 27</p>	<p>Lots 117-172, 193-201, 662-685, 2003, 2004, 3001, 3013, 4002, 4005, 4006, 5004-5006, 5012, 5013, 6002-6004, 7000 and 7003-7006 being a subdivision of Part Rural Section 14549, Section 1 SO 453503, Lot 7002 DP 453541, Lot 1 DP</p>	<p>Surveyor: Russell Thomas Bengie Firm: Davis Ogilvie & Partners Ltd (Christchurch)</p>	<p>Title Plan LT 461956</p>
---	--	---	--



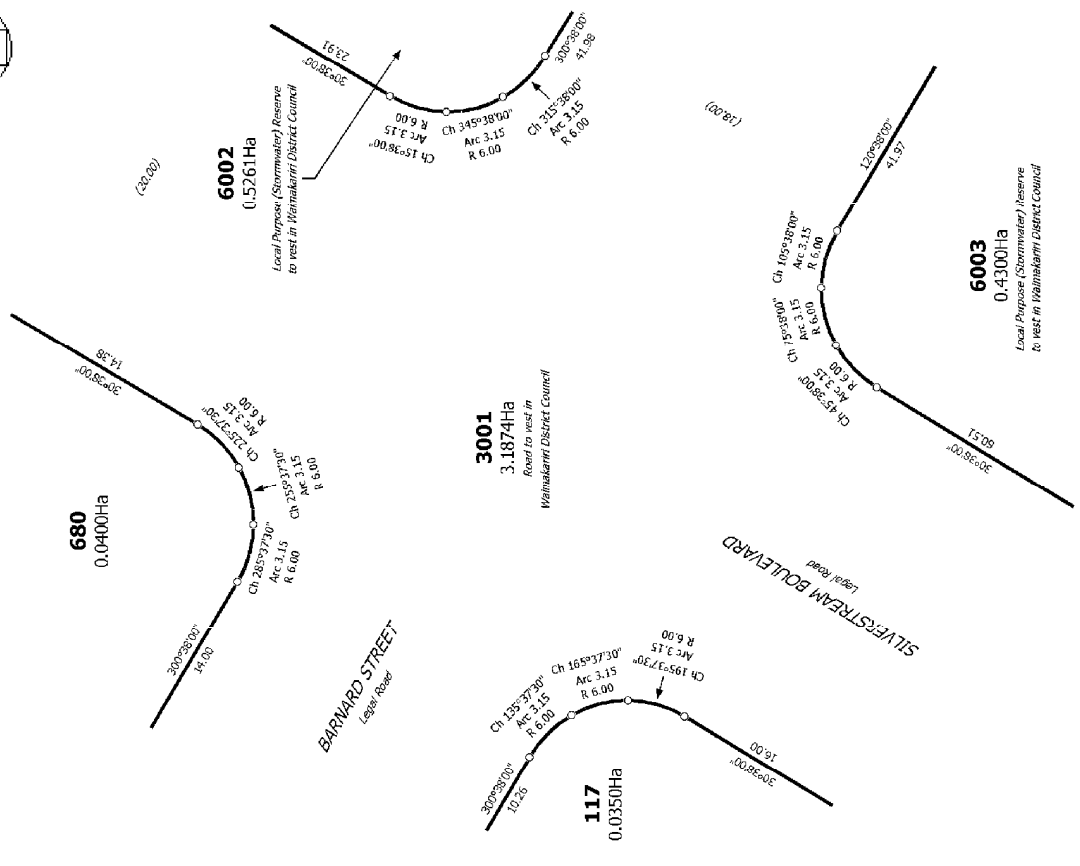


1:1020

<p>Land District: Canterbury</p>	<p>Surveyor: Russell Thomas Benghe Firm: Davis Ogilvie & Partners Ltd (Christchurch)</p>	<p>Title Plan LT 461956</p>
<p>Lots 117-172, 193-201, 662-685, 2003, 2004, 3001, 3013, 4002, 4005, 4006, 5004-5006, 5012, 5013, 6002-6004, 7000 and 7003-7006 being a subdivision of Part Rural Section 14549, Section 1 SO 453503, Lot 7002 DP 453541, Lot 1 DP</p>		
<p>Digitally Generated Plan Generated on: 18/04/2013 4:35pm Page 17 of 27</p>		



Diag. AAJ

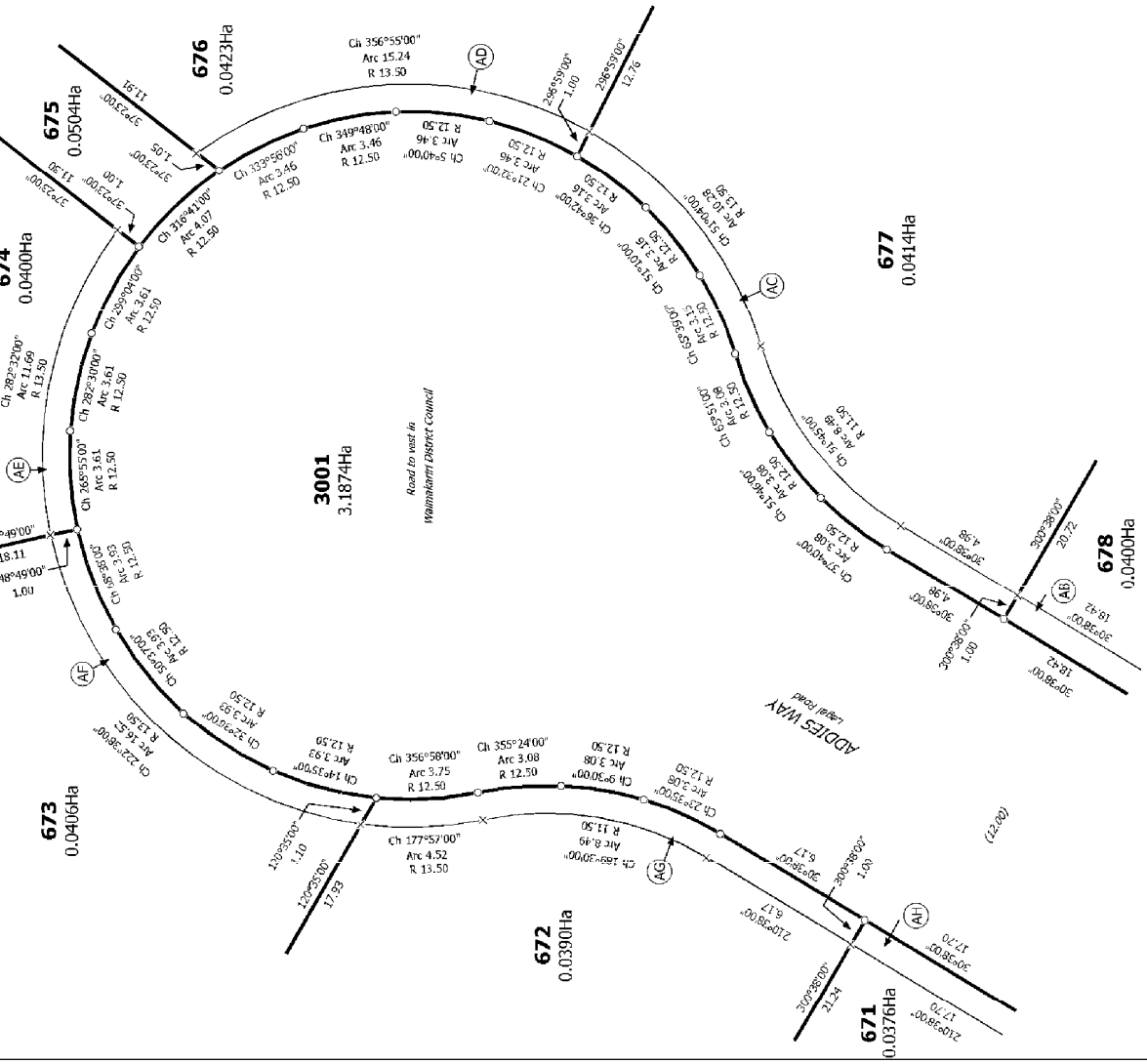


T 11/20

Title Plan
LT 461956

Surveyor: Russell Thomas Bengie
Firm: Davis Ogilvie & Partners Ltd (Christchurch)

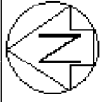
Diag. AAID



Land District: Canterbury
Digitally Generated Plan
Generated on: 18/04/2013 4:30pm Page 18 of 27

Lots 117-172, 193-201, 662-685, 2003, 2004, 3001, 3013, 4002, 4005, 4006, 5004-5006, 5012, 5013, 6002-6004, 7000 and 7003-7006 being a subdivision of Part Rural Section 14549, Section 1 SO 453503, Lot 7002 DP 453541, Lot 1 DP

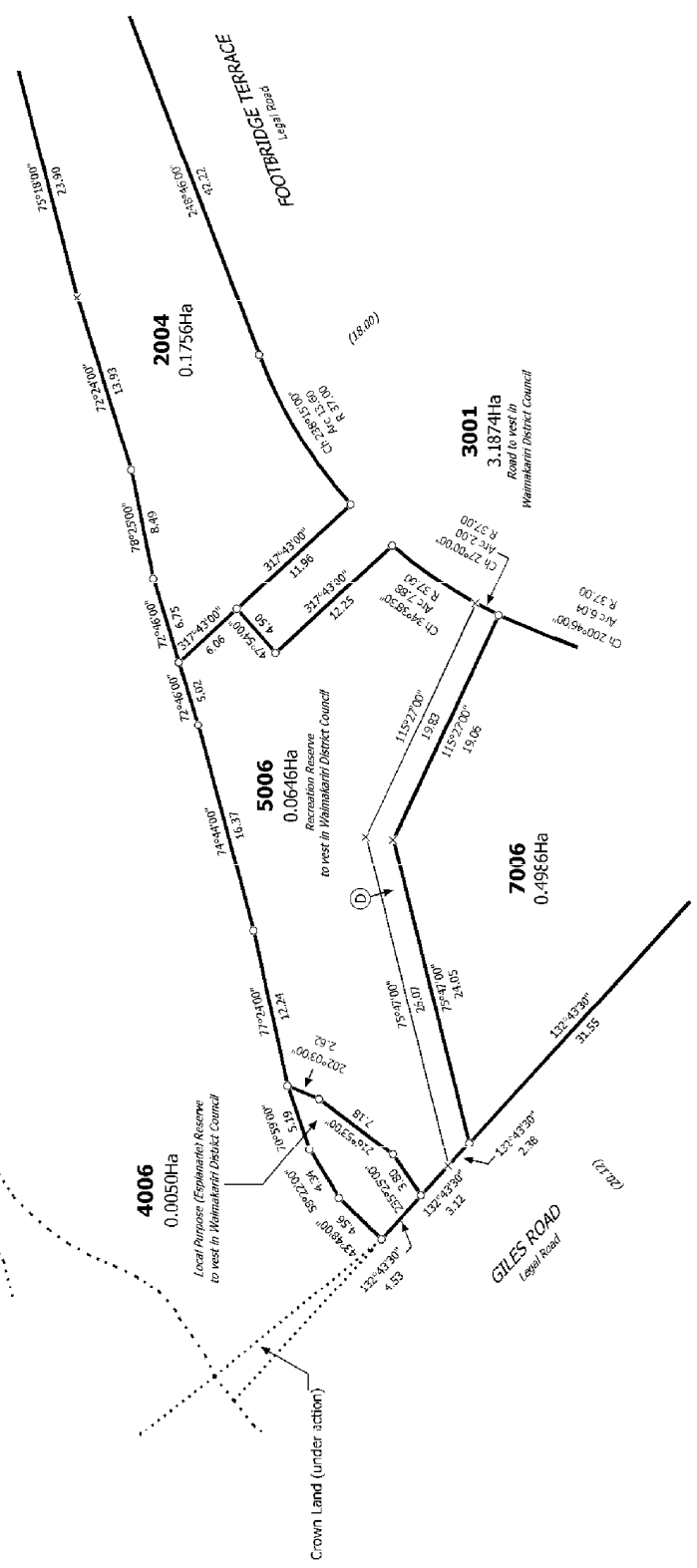




Diag. AAA

KAIAPOI RIVER

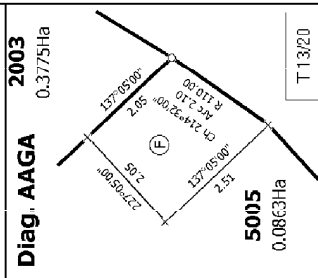
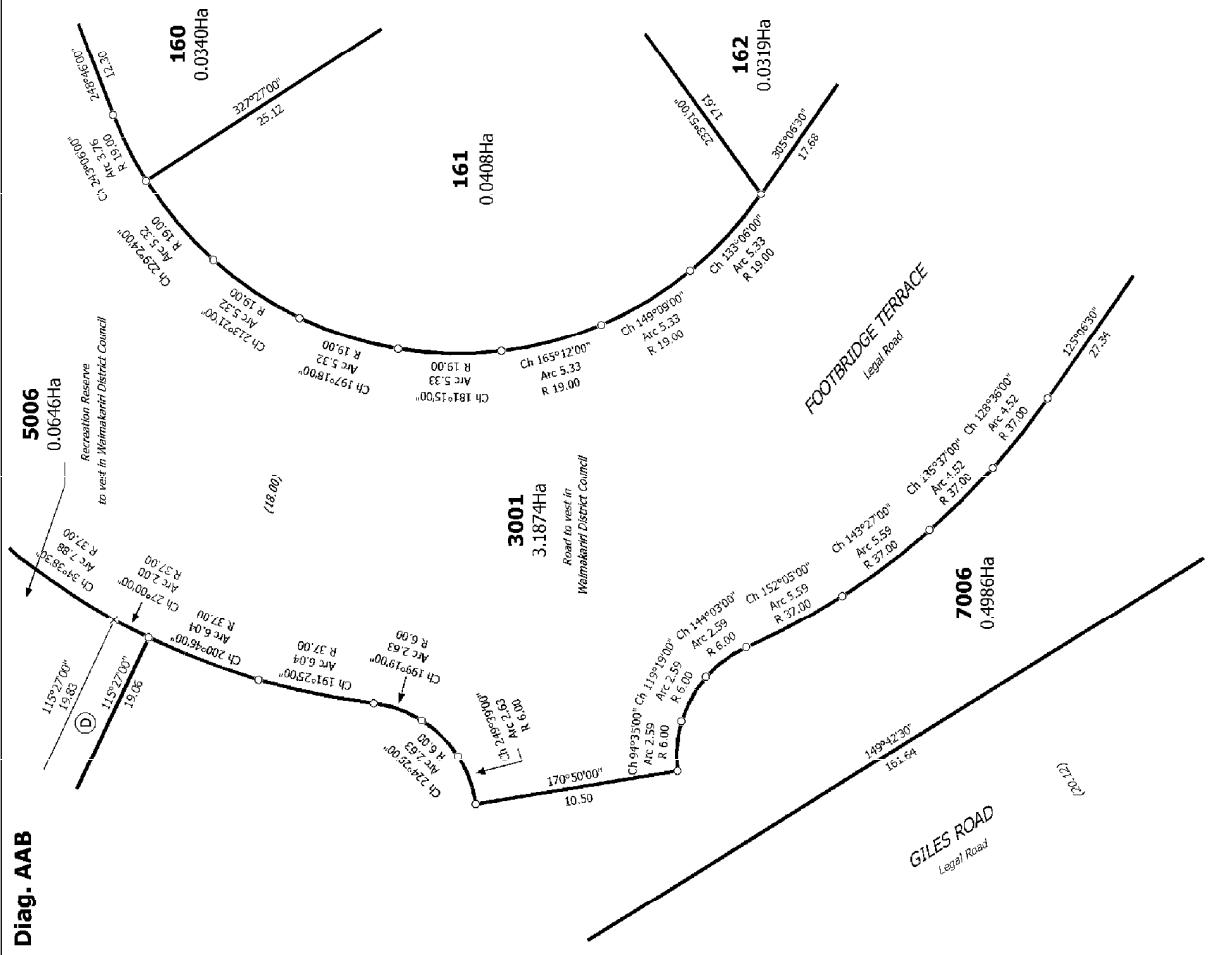
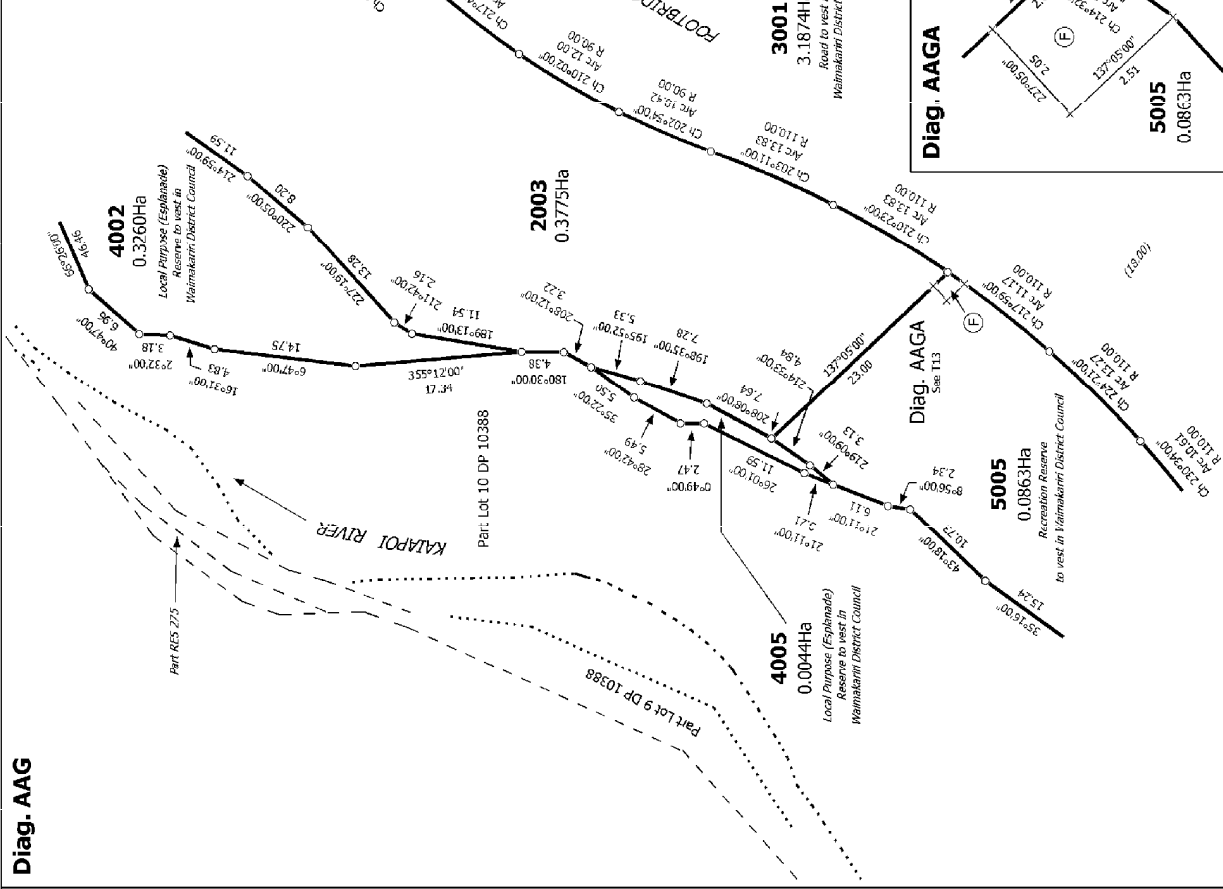
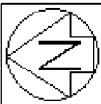
Part Lot. 10 DP. 10368



T12/20

Land District: Canterbury	Surveyor: Russell Thomas Bengie Firm: Davis Ogilvie & Partners Ltd (Christch	Title Plan LT 461956
Digitally Generated Plan Generated on: 18/04/2013 4:30pm Page 19 of 27	Lots 117-172, 193-201, 662-685, 2003, 2004, 3001, 3013, 4002, 4005, 4006, 5004-5006, 5012, 5013, 6002-6004, 7000 and 7003-7006 being a subdivision of Part Rural Section 14549, Section 1 SO 453503, Lot 7002 DP 453541, Lot 1 DP	



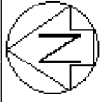


Diag. AAG

Diag. AAB

<p>Land District: Canterbury</p> <p>Digitally Generated Plan</p> <p>Generated on: 18/04/2013 4:30pm Page 20 of 27</p>	<p>Surveyor: Russell Thomas Bengie</p> <p>Firm: Davis Ogilvie & Partners Ltd (Christchurch)</p>	<p>Title Plan</p> <p>LT 461956</p>
<p>Lots 117-172, 193-201, 662-685, 2003, 2004, 3001, 3013, 4002, 4005, 4006, 5004-5006, 5012, 5013, 6002-6004, 7000 and 7003-7006 being a subdivision of Part Rural Section 14549, Section 1 SO 453503, Lot 7002 DP 453541, Lot 1 DP</p>		

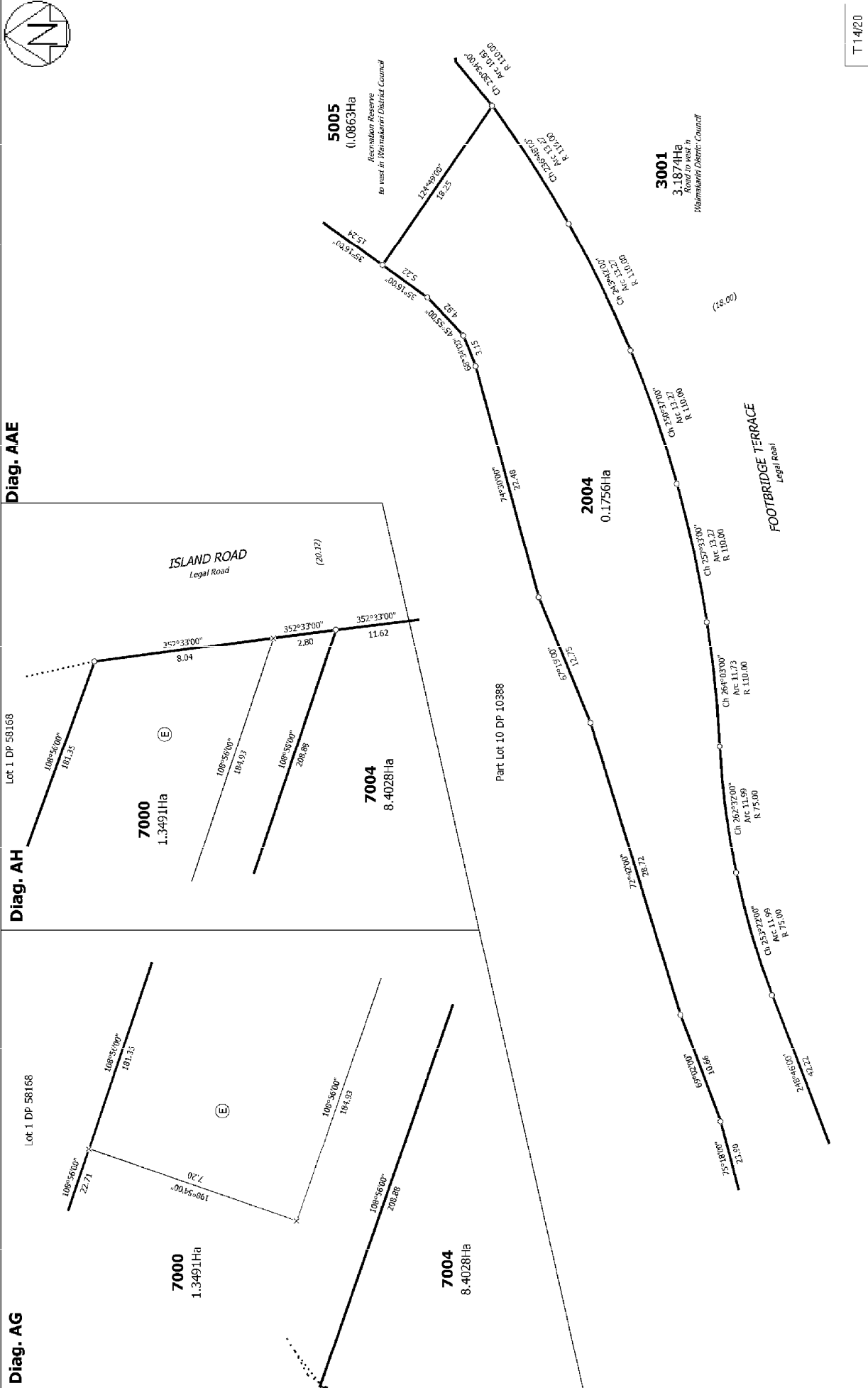




Diag. AAE

Diag. AH

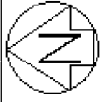
Diag. AG



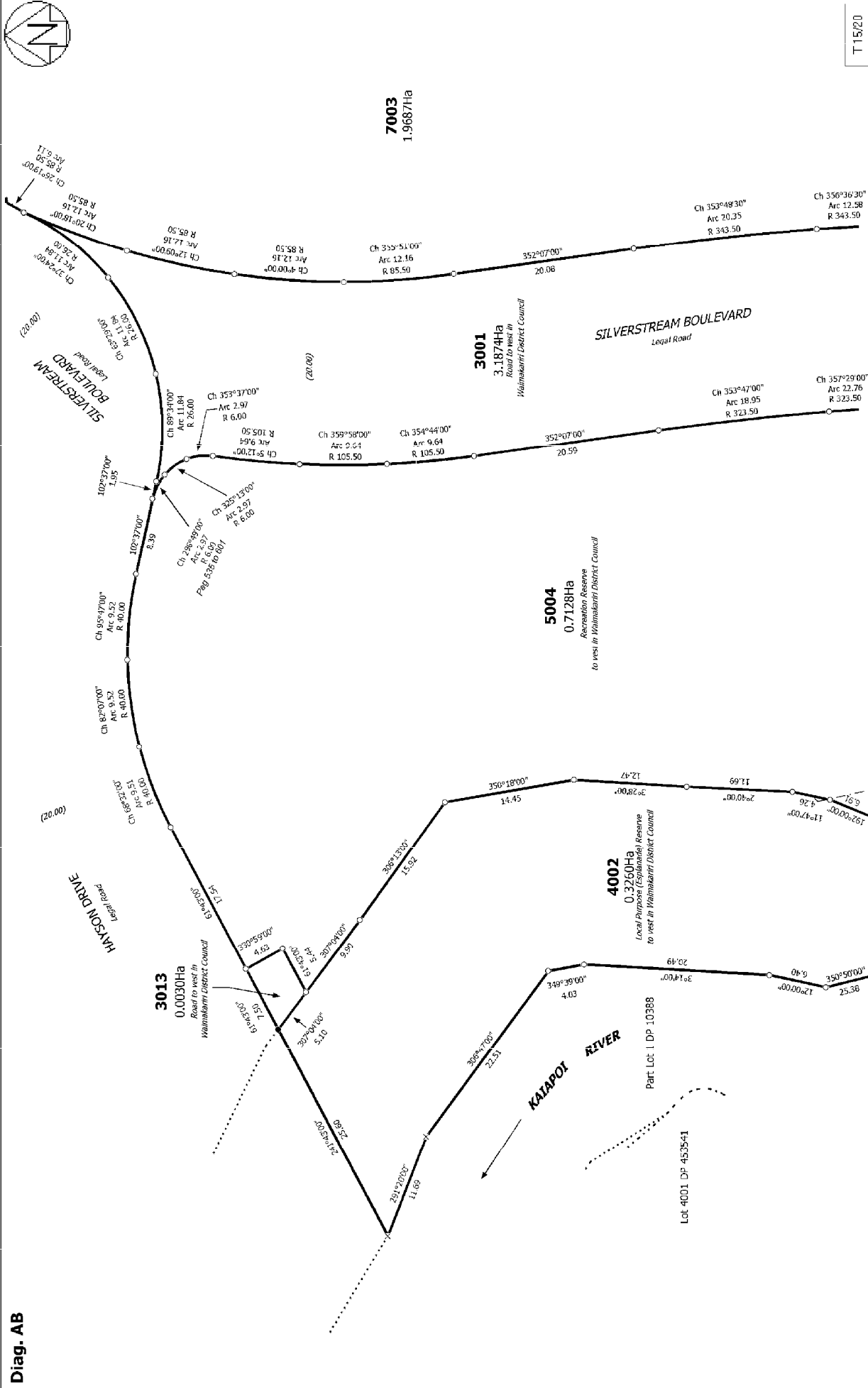
T 1420

<p>Land District: Canterbury</p> <p>Digitally Generated Plan</p> <p>Generated on: 18/04/2013 4:35pm Page 21 of 27</p>	<p>Lots 117-172, 193-201, 662-685, 2003, 2004, 3001, 3013, 4002, 4005, 4006, 5004-5006, 5012, 5013, 6002-6004, 7000 and 7003-7006 being a subdivision of Part Rural Section 14549, Section 1 SO 453503, Lot 7002 DP 453541, Lot 1 DP</p>	<p>Surveyor: Russell Thomas Bengie</p> <p>Firm: Davis Ogilvie & Partners Ltd (Christchurch)</p>	<p>Title Plan</p> <p>LT 461956</p>
---	--	---	------------------------------------

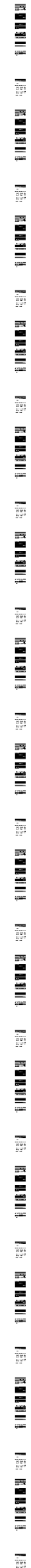


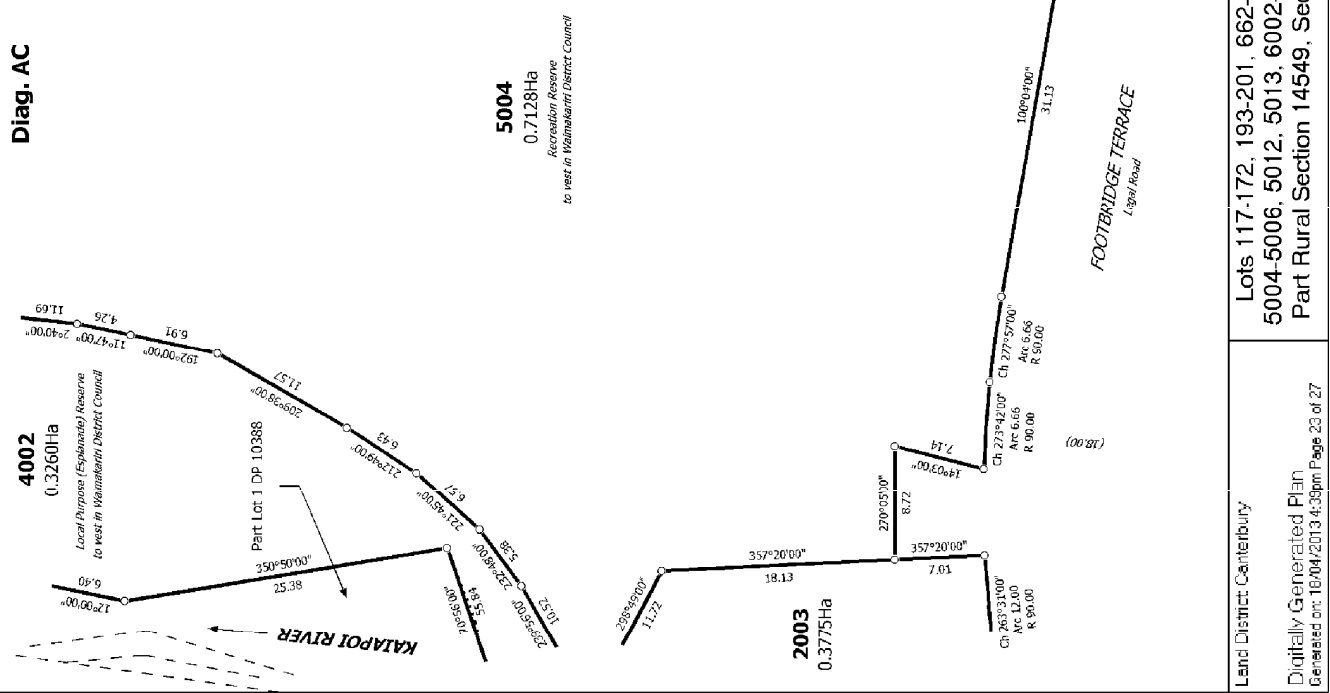
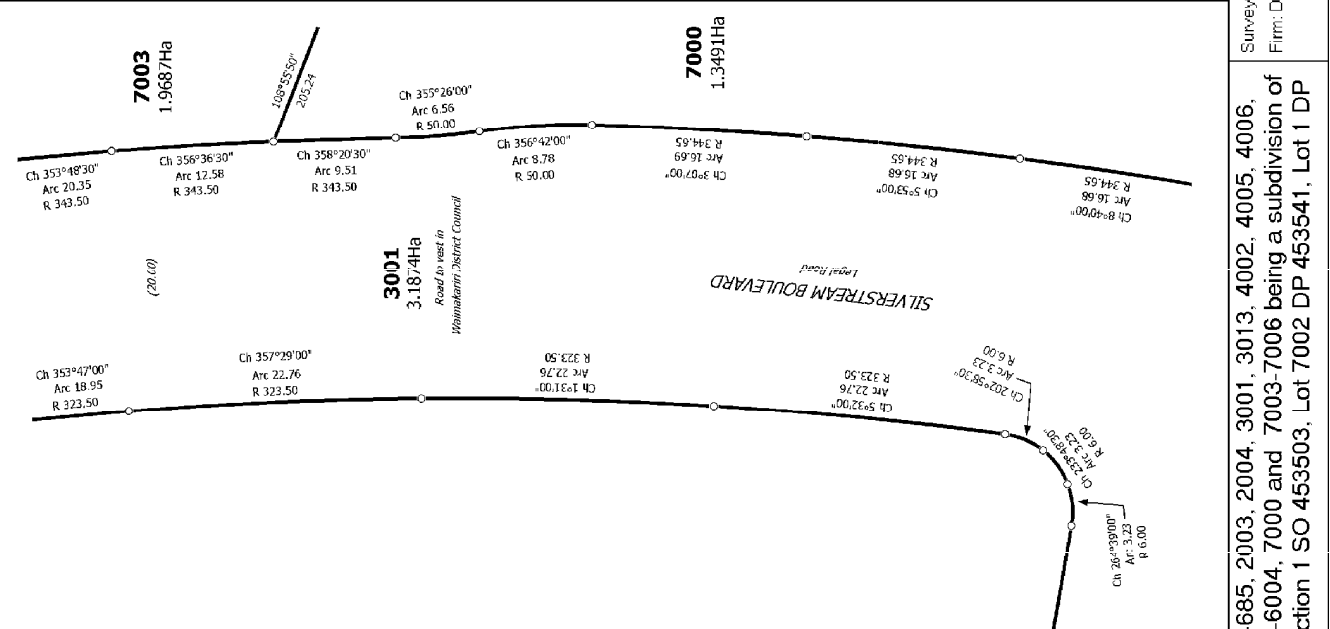
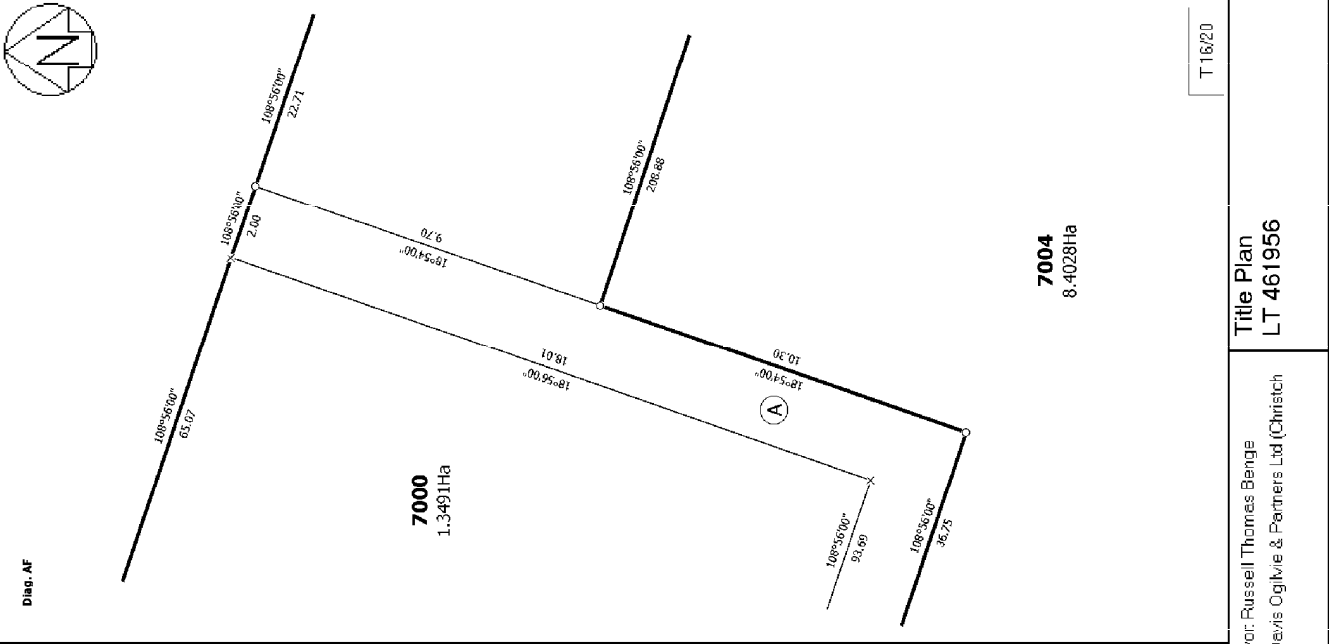


Diag. AB



<p>Land District: Canterbury</p> <p>Digitally Generated Plan</p> <p>Generated on: 18/04/2013 4:35pm Page 22 of 27</p>	<p>Lots 117-172, 193-201, 662-685, 2003, 2004, 3001, 3013, 4002, 4005, 4006, 5004-5006, 5012, 5013, 6002-6004, 7000 and 7003-7006 being a subdivision of Part Rural Section 14549, Section 1 SO 453503, Lot 7002 DP 453541, Lot 1 DP</p>	<p>Surveyor: Russell Thomas Bengie</p> <p>Firm: Davis Ogilvie & Partners Ltd (Christchurch)</p>	<p>Title Plan</p> <p>LT 461956</p>
---	--	---	------------------------------------



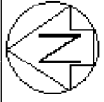


T 18/20

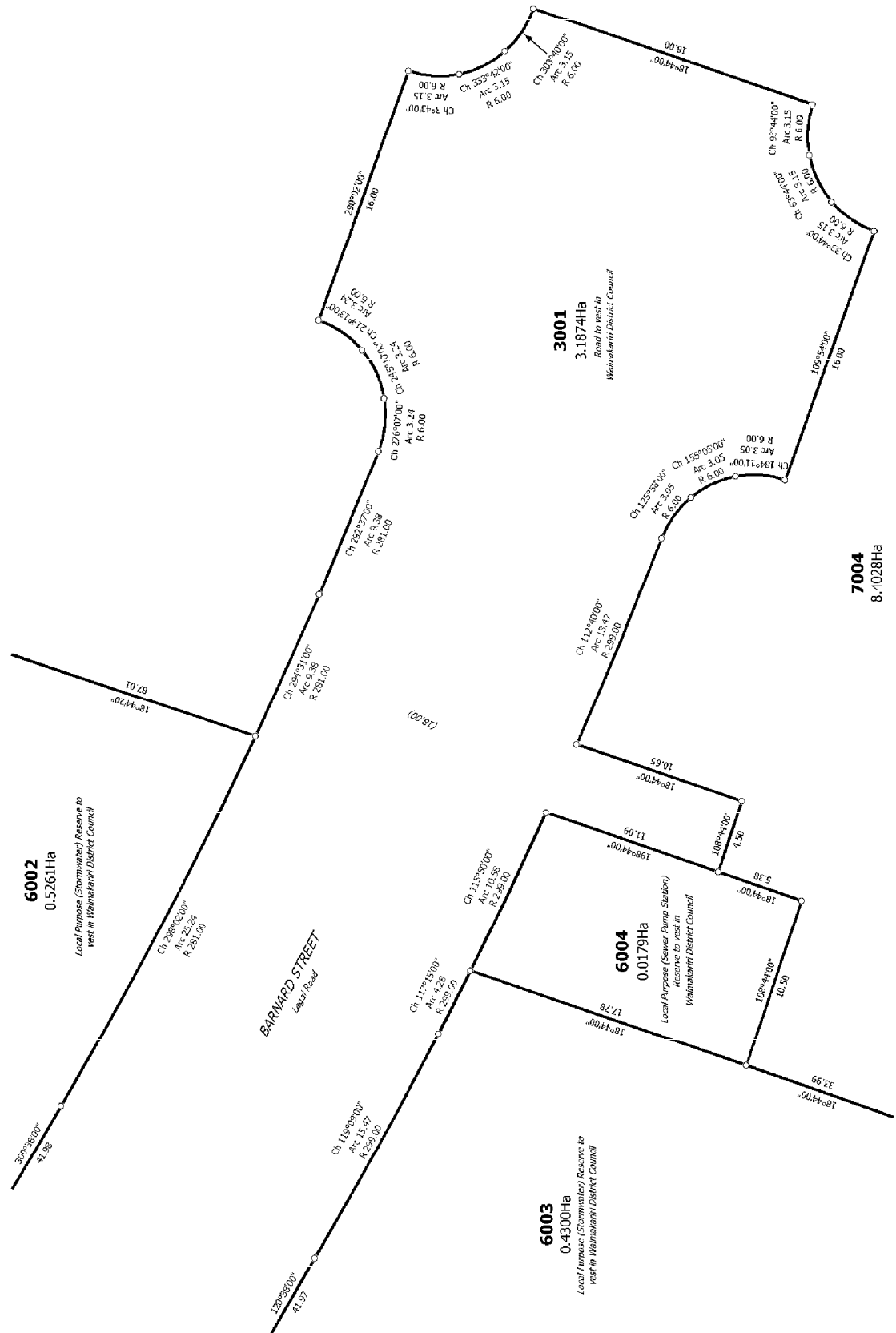
Title Plan
LT 461956

Surveyor: Russell Thomas Bengie
Firm: Davis Ogilvie & Partners Ltd (Christch)

Lots 117-172, 193-201, 662-685, 2003, 2004, 3001, 3013, 4002, 4005, 4006, 5004-5006, 5012, 5013, 6002-6004, 7000 and 7003-7006 being a subdivision of Part Rural Section 14549, Section 1 SO 453503, Lot 7002 DP 453541, Lot 1 DP



Diag. AD



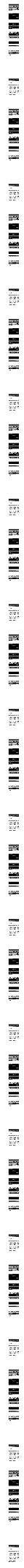
T 17/20

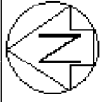
Land District: Canterbury
 Digitally Generated Plan
 Generated on: 18/04/2013 4:36pm Page 24 of 27

Lots 117-172, 193-201, 662-685, 2003, 2004, 3001, 3013, 4002, 4005, 4006, 5004-5006, 5012, 5013, 6002-6004, 7000 and 7003-7006 being a subdivision of Part Rural Section 14549, Section 1 SO 453503, Lot 7002 DP 453541, Lot 1 DP

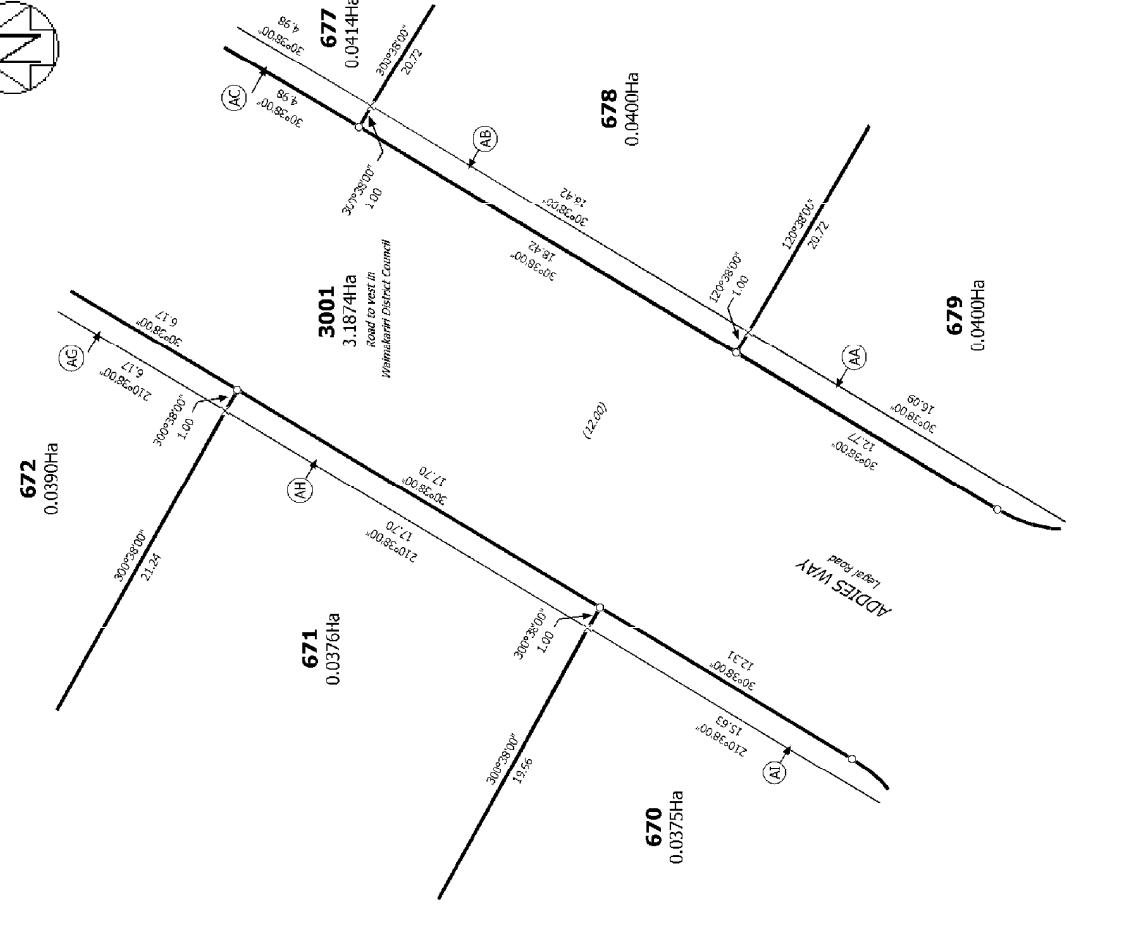
Surveyor: Russell Thomas Bengie
 Firm: Davis Ogilvie & Partners Ltd (Christchurch)

Title Plan
 LT 461956

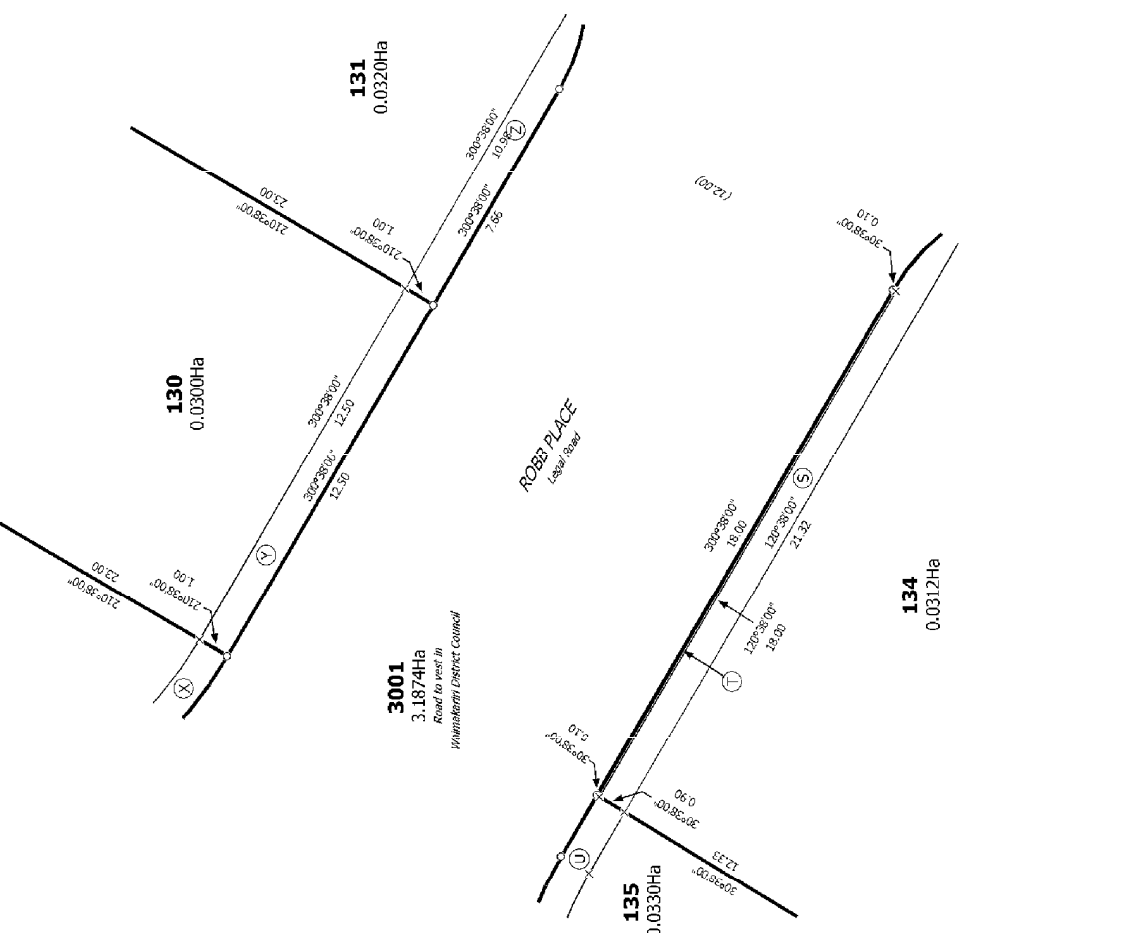




Diag. AAIC



Diag. AAFD



T 20/20	Title Plan LT 461956	Surveyor: Russell Thomas Bengie Firm: Davis Ogilvie & Partners Ltd (Christchurch)	Lots 117-172, 193-201, 662-685, 2003, 2004, 3001, 3013, 4002, 4005, 4006, 5004-5006, 5012, 5013, 6002-6004, 7000 and 7003-7006 being a subdivision of Part Rural Section 14549, Section 1 SO 453503, Lot 7002 DP 453541, Lot 1 DP
Land District: Canterbury	Digitally Generated Plan Generated on: 18/04/2013 4:33pm Page 27 of 27		

