



Title Plan - DP 453541

Survey Number DP 453541
Surveyor Reference 29529 - Silverstream Stage 1
Surveyor Russell Thomas Benge
Survey Firm Davis Ogilvie & Partners Ltd (Christchurch)
Surveyor Declaration I Russell Thomas Benge, being a licensed cadastral surveyor, certify that:
(a) this dataset provided by me and its related survey are accurate, correct and in accordance with the Cadastral Survey Act 2002 and the Rules for Cadastral Survey 2010, and
(b) the survey was undertaken by me or under my personal direction.
Declared on 11 Jul 2012 05:36 PM

Survey Details

Dataset Description Lots 1-116, 660, 661, 2000-2002, 3000, 3015, 3016, 4000, 4001, 5000-5003, 6000, 6001, 7001 and 7002 being Subdivision of Section 2 SO 18794, Pt Lot 1 DP 4115 and Pt Lot 1 DP 8595

Status Deposited

Land District Canterbury **Survey Class** Class A

Submitted Date 11/07/2012 **Survey Approval Date** 13/07/2012

Deposit Date 28/06/2012

Territorial Authorities

Waimakariri District

Comprised In

CT CB35D/230
CT CB293/231
CT CB36D/778

Created Parcels

| Parcels | Parcel Intent | Area | CT Reference |
|------------------------------|------------------|-----------|--------------|
| Lot 17 Deposited Plan 453541 | Fee Simple Title | 0.0532 Ha | 583898 |
| Lot 16 Deposited Plan 453541 | Fee Simple Title | 0.0500 Ha | 583899 |
| Lot 15 Deposited Plan 453541 | Fee Simple Title | 0.0500 Ha | 583900 |
| Lot 14 Deposited Plan 453541 | Fee Simple Title | 0.0500 Ha | 583901 |
| Lot 13 Deposited Plan 453541 | Fee Simple Title | 0.0500 Ha | 583902 |
| Lot 12 Deposited Plan 453541 | Fee Simple Title | 0.0500 Ha | 583903 |
| Lot 11 Deposited Plan 453541 | Fee Simple Title | 0.0500 Ha | 583904 |
| Lot 10 Deposited Plan 453541 | Fee Simple Title | 0.0500 Ha | 583905 |
| Lot 9 Deposited Plan 453541 | Fee Simple Title | 0.0500 Ha | 583906 |
| Lot 8 Deposited Plan 453541 | Fee Simple Title | 0.0532 Ha | 583907 |
| Lot 1 Deposited Plan 453541 | Fee Simple Title | 0.0500 Ha | 583908 |
| Lot 2 Deposited Plan 453541 | Fee Simple Title | 0.0390 Ha | 583909 |
| Lot 3 Deposited Plan 453541 | Fee Simple Title | 0.0390 Ha | 583910 |
| Lot 6 Deposited Plan 453541 | Fee Simple Title | 0.0312 Ha | 583911 |



Title Plan - DP 453541

Created Parcels

| Parcels | Parcel Intent | Area | CT Reference |
|--------------------------------|---|-----------|--------------|
| Lot 7 Deposited Plan 453541 | Fee Simple Title | 0.0312 Ha | 583912 |
| Lot 28 Deposited Plan 453541 | Fee Simple Title | 0.0338 Ha | 583913 |
| Lot 25 Deposited Plan 453541 | Fee Simple Title | 0.0338 Ha | 583914 |
| Lot 22 Deposited Plan 453541 | Fee Simple Title | 0.0330 Ha | 583915 |
| Lot 31 Deposited Plan 453541 | Fee Simple Title | 0.0369 Ha | 583916 |
| Lot 33 Deposited Plan 453541 | Fee Simple Title | 0.0321 Ha | 583917 |
| Lot 36 Deposited Plan 453541 | Fee Simple Title | 0.0350 Ha | 583918 |
| Lot 37 Deposited Plan 453541 | Fee Simple Title | 0.0350 Ha | 583919 |
| Lot 43 Deposited Plan 453541 | Fee Simple Title | 0.0365 Ha | 583920 |
| Lot 45 Deposited Plan 453541 | Fee Simple Title | 0.0330 Ha | 583921 |
| Lot 5001 Deposited Plan 453541 | Vesting on Deposit for Recreation Reserve (Territorial Authority) | 0.0560 Ha | 583922 |
| Lot 48 Deposited Plan 453541 | Fee Simple Title | 0.0312 Ha | 583923 |
| Lot 51 Deposited Plan 453541 | Fee Simple Title | 0.0338 Ha | 583924 |
| Lot 52 Deposited Plan 453541 | Fee Simple Title | 0.0338 Ha | 583925 |
| Lot 53 Deposited Plan 453541 | Fee Simple Title | 0.0364 Ha | 583926 |
| Lot 56 Deposited Plan 453541 | Fee Simple Title | 0.0390 Ha | 583927 |
| Lot 57 Deposited Plan 453541 | Fee Simple Title | 0.0390 Ha | 583928 |
| Lot 60 Deposited Plan 453541 | Fee Simple Title | 0.0300 Ha | 583929 |
| Lot 61 Deposited Plan 453541 | Fee Simple Title | 0.0300 Ha | 583930 |
| Lot 62 Deposited Plan 453541 | Fee Simple Title | 0.0567 Ha | 583931 |
| Lot 63 Deposited Plan 453541 | Fee Simple Title | 0.0538 Ha | 583932 |
| Lot 64 Deposited Plan 453541 | Fee Simple Title | 0.0538 Ha | 583933 |
| Lot 65 Deposited Plan 453541 | Fee Simple Title | 0.0538 Ha | 583934 |
| Lot 66 Deposited Plan 453541 | Fee Simple Title | 0.0538 Ha | 583935 |
| Lot 67 Deposited Plan 453541 | Fee Simple Title | 0.0538 Ha | 583936 |
| Lot 68 Deposited Plan 453541 | Fee Simple Title | 0.0538 Ha | 583937 |
| Lot 69 Deposited Plan 453541 | Fee Simple Title | 0.0550 Ha | 583938 |
| Lot 77 Deposited Plan 453541 | Fee Simple Title | 0.0332 Ha | 583939 |
| Lot 78 Deposited Plan 453541 | Fee Simple Title | 0.0332 Ha | 583940 |
| Lot 79 Deposited Plan 453541 | Fee Simple Title | 0.0332 Ha | 583941 |
| Lot 82 Deposited Plan 453541 | Fee Simple Title | 0.0332 Ha | 583942 |
| Lot 83 Deposited Plan 453541 | Fee Simple Title | 0.0332 Ha | 583943 |
| Lot 84 Deposited Plan 453541 | Fee Simple Title | 0.0332 Ha | 583944 |
| Lot 91 Deposited Plan 453541 | Fee Simple Title | 0.0300 Ha | 583945 |
| Lot 92 Deposited Plan 453541 | Fee Simple Title | 0.0300 Ha | 583946 |
| Lot 93 Deposited Plan 453541 | Fee Simple Title | 0.0375 Ha | 583947 |
| Lot 94 Deposited Plan 453541 | Fee Simple Title | 0.0410 Ha | 583948 |
| Lot 95 Deposited Plan 453541 | Fee Simple Title | 0.0475 Ha | 583949 |



Title Plan - DP 453541

Created Parcels

| Parcels | Parcel Intent | Area | CT Reference |
|--------------------------------|---|------------------------|--------------|
| Lot 96 Deposited Plan 453541 | Fee Simple Title | 0.0425 Ha | 583950 |
| Lot 97 Deposited Plan 453541 | Fee Simple Title | 0.0329 Ha | 583951 |
| Lot 99 Deposited Plan 453541 | Fee Simple Title | 0.0400 Ha | 583952 |
| Lot 101 Deposited Plan 453541 | Fee Simple Title | 0.0300 Ha | 583953 |
| Lot 102 Deposited Plan 453541 | Fee Simple Title | 0.0300 Ha | 583954 |
| Lot 103 Deposited Plan 453541 | Fee Simple Title | 0.0400 Ha | 583955 |
| Lot 104 Deposited Plan 453541 | Fee Simple Title | 0.0350 Ha | 583956 |
| Lot 105 Deposited Plan 453541 | Fee Simple Title | 0.0400 Ha | 583957 |
| Lot 107 Deposited Plan 453541 | Fee Simple Title | 0.0405 Ha | 583958 |
| Lot 108 Deposited Plan 453541 | Fee Simple Title | 0.0500 Ha | 583959 |
| Lot 109 Deposited Plan 453541 | Fee Simple Title | 0.0477 Ha | 583960 |
| Lot 111 Deposited Plan 453541 | Fee Simple Title | 0.0375 Ha | 583961 |
| Lot 112 Deposited Plan 453541 | Fee Simple Title | 0.0325 Ha | 583962 |
| Lot 113 Deposited Plan 453541 | Fee Simple Title | 0.0300 Ha | 583963 |
| Lot 114 Deposited Plan 453541 | Fee Simple Title | 0.0350 Ha | 583964 |
| Lot 115 Deposited Plan 453541 | Fee Simple Title | 0.0370 Ha | 583965 |
| Lot 6001 Deposited Plan 453541 | Vesting on Deposit for Local Purpose Reserve Road | 0.0147 Ha 0.0460 Ha | 583966 |
| Area AZ Deposited Plan 453541 | Easement | | |
| Area BA Deposited Plan 453541 | Easement | | |
| Area BB Deposited Plan 453541 | Easement | | |
| Area BC Deposited Plan 453541 | Easement | | |
| Lot 660 Deposited Plan 453541 | Fee Simple Title | 0.0570 Ha | 583967 |
| Area BD Deposited Plan 453541 | Easement | | |
| Lot 6000 Deposited Plan 453541 | Vesting on Deposit for Local Purpose Reserve | 0.6255 Ha | 583968 |
| Lot 5003 Deposited Plan 453541 | Vesting on Deposit for Recreation Reserve (Territorial Authority) | 0.3089 Ha | 583969 |
| Lot 32 Deposited Plan 453541 | Fee Simple Title | 0.0319 Ha | 583970 |
| Lot 21 Deposited Plan 453541 | Fee Simple Title | 0.0317 Ha | 583971 |
| Lot 30 Deposited Plan 453541 | Fee Simple Title | 0.0350 Ha | 583972 |
| Lot 23 Deposited Plan 453541 | Fee Simple Title | 0.0350 Ha | 583973 |
| Lot 29 Deposited Plan 453541 | Fee Simple Title | 0.0338 Ha | 583974 |
| Lot 24 Deposited Plan 453541 | Fee Simple Title | 0.0338 Ha | 583975 |
| Lot 27 Deposited Plan 453541 | Fee Simple Title | 0.0338 Ha | 583976 |
| Lot 26 Deposited Plan 453541 | Fee Simple Title | 0.0338 Ha | 583977 |
| Lot 5 Deposited Plan 453541 | Fee Simple Title | 0.0369 Ha | 583978 |
| Lot 4 Deposited Plan 453541 | Fee Simple Title | 0.0429 Ha | 583979 |
| Lot 44 Deposited Plan 453541 | Fee Simple Title | 0.0316 Ha | 583980 |



Title Plan - DP 453541

Created Parcels

| Parcels | Parcel Intent | Area | CT Reference |
|--------------------------------|---|-----------|--------------|
| Lot 46 Deposited Plan 453541 | Fee Simple Title | 0.0349 Ha | 583981 |
| Lot 47 Deposited Plan 453541 | Fee Simple Title | 0.0312 Ha | 583982 |
| Lot 54 Deposited Plan 453541 | Fee Simple Title | 0.0372 Ha | 583983 |
| Lot 50 Deposited Plan 453541 | Fee Simple Title | 0.0440 Ha | 583984 |
| Lot 49 Deposited Plan 453541 | Fee Simple Title | 0.0421 Ha | 583985 |
| Lot 55 Deposited Plan 453541 | Fee Simple Title | 0.0500 Ha | 583986 |
| Lot 58 Deposited Plan 453541 | Fee Simple Title | 0.0429 Ha | 583987 |
| Lot 59 Deposited Plan 453541 | Fee Simple Title | 0.0316 Ha | 583988 |
| Lot 74 Deposited Plan 453541 | Fee Simple Title | 0.0322 Ha | 583989 |
| Lot 75 Deposited Plan 453541 | Fee Simple Title | 0.0326 Ha | 583990 |
| Lot 70 Deposited Plan 453541 | Fee Simple Title | 0.0654 Ha | 583991 |
| Lot 71 Deposited Plan 453541 | Fee Simple Title | 0.0701 Ha | 583992 |
| Lot 72 Deposited Plan 453541 | Fee Simple Title | 0.0566 Ha | 583993 |
| Lot 76 Deposited Plan 453541 | Fee Simple Title | 0.0400 Ha | 583994 |
| Lot 85 Deposited Plan 453541 | Fee Simple Title | 0.0400 Ha | 583995 |
| Lot 89 Deposited Plan 453541 | Fee Simple Title | 0.0525 Ha | 583996 |
| Lot 88 Deposited Plan 453541 | Fee Simple Title | 0.0546 Ha | 583997 |
| Lot 90 Deposited Plan 453541 | Fee Simple Title | 0.0400 Ha | 583998 |
| Lot 87 Deposited Plan 453541 | Fee Simple Title | 0.0407 Ha | 583999 |
| Lot 86 Deposited Plan 453541 | Fee Simple Title | 0.0420 Ha | 584000 |
| Lot 80 Deposited Plan 453541 | Fee Simple Title | 0.0400 Ha | 584001 |
| Lot 81 Deposited Plan 453541 | Fee Simple Title | 0.0400 Ha | 584002 |
| Lot 5002 Deposited Plan 453541 | Vesting on Deposit for Recreation Reserve (Territorial Authority) | 0.1017 Ha | 584003 |
| Lot 110 Deposited Plan 453541 | Fee Simple Title | 0.0365 Ha | 584004 |
| Lot 98 Deposited Plan 453541 | Fee Simple Title | 0.0417 Ha | 584005 |
| Lot 100 Deposited Plan 453541 | Fee Simple Title | 0.0417 Ha | 584006 |
| Lot 116 Deposited Plan 453541 | Fee Simple Title | 0.0400 Ha | 584007 |
| Lot 2002 Deposited Plan 453541 | Fee Simple Title | 0.3952 Ha | 584008 |
| Lot 2001 Deposited Plan 453541 | Fee Simple Title | 0.2328 Ha | 584009 |
| Lot 2000 Deposited Plan 453541 | Fee Simple Title | 0.2498 Ha | 584010 |
| Area E Deposited Plan 453541 | Easement | | |
| Area D Deposited Plan 453541 | Easement | | |
| Area C Deposited Plan 453541 | Easement | | |
| Area B Deposited Plan 453541 | Easement | | |
| Area A Deposited Plan 453541 | Easement | | |
| Area BE Deposited Plan 453541 | Easement | | |
| Area BF Deposited Plan 453541 | Easement | | |
| Area BG Deposited Plan 453541 | Easement | | |



Title Plan - DP 453541

Created Parcels

| Parcels | Parcel Intent | Area | CT Reference |
|--------------------------------|---|-----------|--------------|
| Lot 42 Deposited Plan 453541 | Fee Simple Title | 0.0435 Ha | 584011 |
| Lot 41 Deposited Plan 453541 | Fee Simple Title | 0.0576 Ha | 584012 |
| Lot 40 Deposited Plan 453541 | Fee Simple Title | 0.0792 Ha | 584013 |
| Lot 39 Deposited Plan 453541 | Fee Simple Title | 0.0494 Ha | 584014 |
| Lot 38 Deposited Plan 453541 | Fee Simple Title | 0.0379 Ha | 584015 |
| Lot 34 Deposited Plan 453541 | Fee Simple Title | 0.0300 Ha | 584016 |
| Lot 5000 Deposited Plan 453541 | Vesting on Deposit for Recreation Reserve (Territorial Authority) | 0.0315 Ha | 584017 |
| Lot 35 Deposited Plan 453541 | Fee Simple Title | 0.0329 Ha | 584018 |
| Area BJ Deposited Plan 453541 | Easement | | |
| Area G Deposited Plan 453541 | Easement | | |
| Area F Deposited Plan 453541 | Easement | | |
| Area H Deposited Plan 453541 | Easement | | |
| Area BH Deposited Plan 453541 | Easement | | |
| Area J Deposited Plan 453541 | Easement | | |
| Area K Deposited Plan 453541 | Easement | | |
| Lot 106 Deposited Plan 453541 | Fee Simple Title | 0.0429 Ha | 584019 |
| Area BK Deposited Plan 453541 | Easement | | |
| Lot 4000 Deposited Plan 453541 | Vesting on Deposit for Local Purpose Reserve | 1.0679 Ha | 584020 |
| Area BL Deposited Plan 453541 | Easement | | |
| Lot 73 Deposited Plan 453541 | Fee Simple Title | 0.0350 Ha | 584021 |
| Area CL Deposited Plan 453541 | Easement | | |
| Area CM Deposited Plan 453541 | Easement | | |
| Lot 661 Deposited Plan 453541 | Fee Simple Title | 0.0450 Ha | 584022 |
| Lot 20 Deposited Plan 453541 | Fee Simple Title | 0.0576 Ha | 584023 |
| Lot 18 Deposited Plan 453541 | Fee Simple Title | 0.0416 Ha | 584024 |
| Lot 19 Deposited Plan 453541 | Fee Simple Title | 0.0435 Ha | 584025 |
| | Road | 2.0653 Ha | |
| | Road | 0.4052 Ha | |
| Lot 7001 Deposited Plan 453541 | Fee Simple Title | 3.6822 Ha | 585024 |
| Lot 7002 Deposited Plan 453541 | Fee Simple Title | 3.2984 Ha | 585024 |
| Area BM Deposited Plan 453541 | Easement | | |
| Area BN Deposited Plan 453541 | Easement | | |
| Area BO Deposited Plan 453541 | Easement | | |
| Area BP Deposited Plan 453541 | Easement | | |
| Area BQ Deposited Plan 453541 | Easement | | |
| Area BR Deposited Plan 453541 | Easement | | |
| Area BS Deposited Plan 453541 | Easement | | |

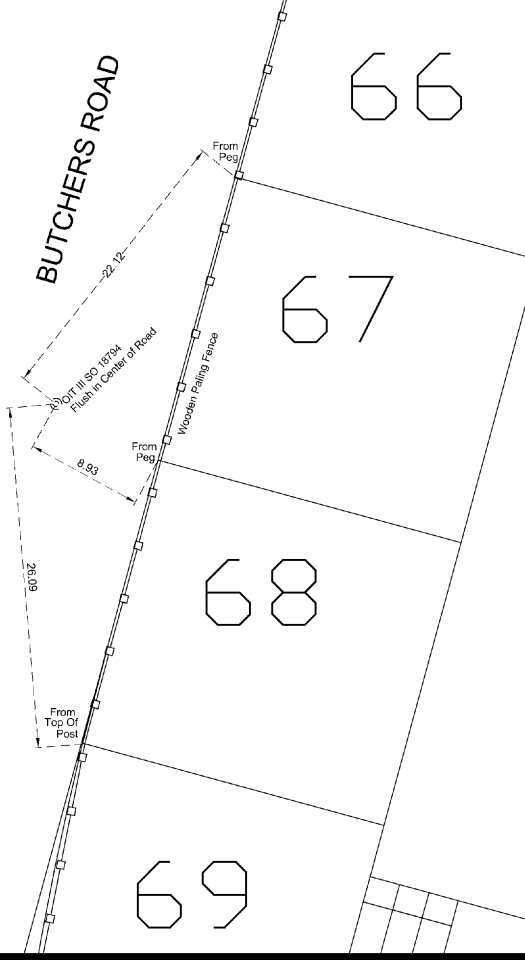


Title Plan - DP 453541

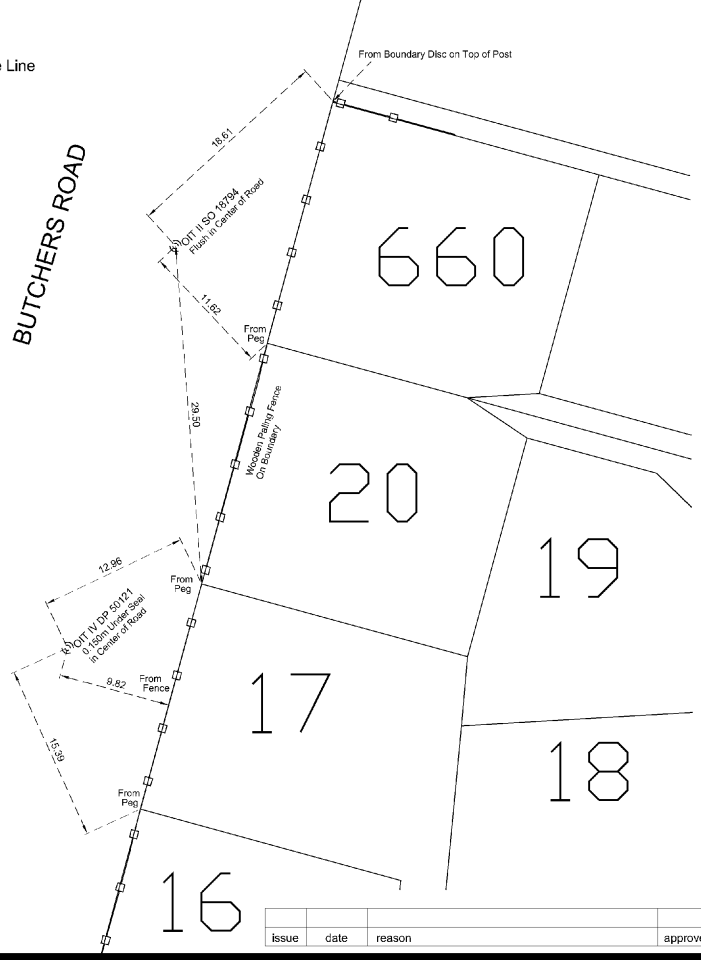
Created Parcels

| Parcels | Parcel Intent | Area | CT Reference |
|--------------------------------|---|------------------|--------------|
| Area BT Deposited Plan 453541 | Easement | | |
| Area BU Deposited Plan 453541 | Easement | | |
| Area BV Deposited Plan 453541 | Easement | | |
| Area BW Deposited Plan 453541 | Easement | | |
| Area BX Deposited Plan 453541 | Easement | | |
| Area BY Deposited Plan 453541 | Easement | | |
| Area BZ Deposited Plan 453541 | Easement | | |
| Area CA Deposited Plan 453541 | Easement | | |
| Area CB Deposited Plan 453541 | Easement | | |
| Area CC Deposited Plan 453541 | Easement | | |
| Area CD Deposited Plan 453541 | Easement | | |
| Area CE Deposited Plan 453541 | Easement | | |
| Area CF Deposited Plan 453541 | Easement | | |
| Area CG Deposited Plan 453541 | Easement | | |
| Area CH Deposited Plan 453541 | Easement | | |
| Area CJ Deposited Plan 453541 | Easement | | |
| Area CK Deposited Plan 453541 | Easement | | |
| Lot 4001 Deposited Plan 453541 | Vesting on Deposit for Local Purpose Reserve | 1.0325 Ha | 584026 |
| Total Area | | <hr/> 18.4668 Ha | |

Disclaimer: This document shall only be reproduced in full with approval from Davis Oglivie



Key:
 □ : Fence Line



CAD ref: 29529

DP 453541 - PRM Diagram - Silverstream Stage 1



Davis Oglivie Ph: 03 396-1653
 Engineers • Surveyors • Planners
 186 Hazledean Road • Addington
 Christchurch, New Zealand
 P.O. Box 369 Christchurch 8140
 OFFICES ALSO IN:
 Nelson • Timaru • Greymouth

| design | drawn | QA check | dwg | issue |
|--------|-------|----------|--------------|-------|
| KH | KH | RB | | |
| scale | date | file | 300 A | |
| NTS | 6/12 | 29529 | | |

| issue | date | reason | approved |
|-------|------|--------|----------|
| | | | |



Davis Ogilvie & Partners Ltd
 186 Hazeldean Road, Addington, Christchurch
 P O Box 589, Christchurch, 8140, New Zealand

☎ (03) 366 1653 0800 999 333 ☎ (03) 379 2348
 ✉ admin@do.co.nz 🌐 www.do.co.nz

Offices in Christchurch, Nelson, Greymouth and Timaru

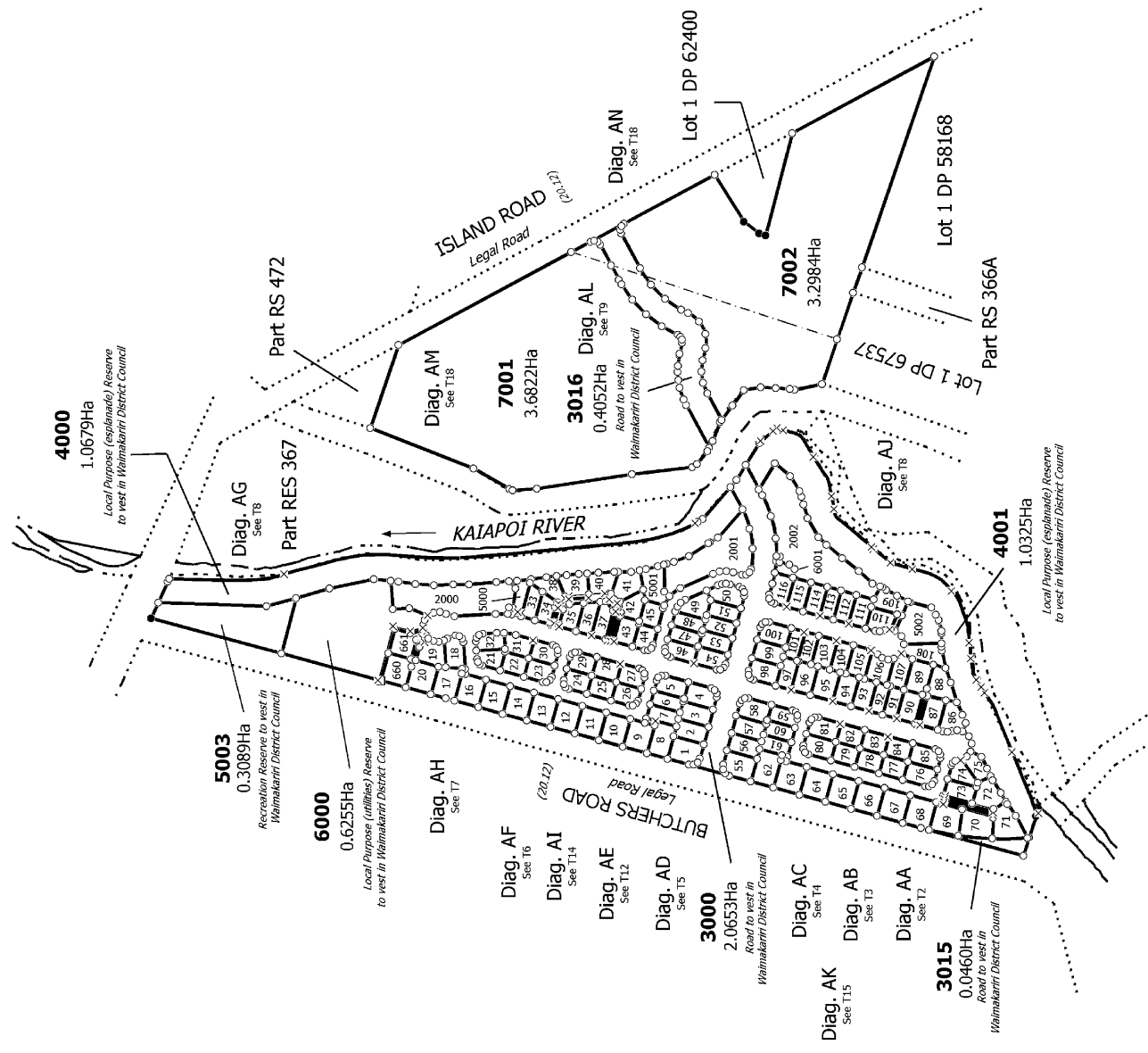
DP 453541

| MEMORANDUM OF EASEMENTS | | | |
|--|--------------|--------------------------|----------------------------------|
| Purpose | Shown | Servient Tenement | Dominant Tenement/Grantee |
| RIGHT OF WAY, RIGHT TO DRAIN SEWAGE & WATER, RIGHT TO CONVEY WATER, ELECTRICITY, TELECOMMUNICATIONS & COMPUTER MEDIA | A, BE | Lot 38 | Lots 39 – 42 |
| | B, BF | Lot 39 | Lots 38, 40 – 42 |
| | C, BG | Lot 40 | Lots 38, 39, 41, 42 |
| | D | Lot 41 | Lots 38 – 40, 42 |
| | E | Lot 42 | Lots 38 – 41 |
| | F, BH | Lot 70 | Lots 69, 71, 72 |
| | G, BJ | Lot 71 | Lots 69, 70, 72 |
| | H, BK | Lot 72 | Lots 69 – 71 |
| | J | Lot 88 | Lot 89 |
| | K | Lot 89 | Lot 88 |
| | AZ, BB | Lot 20 | Lot 660 |
| | BA, BC | Lot 660 | Lot 20 |
| RIGHT TO CONVEY TELECOMMUNICATIONS & COMPUTER MEDIA IN GROSS | A, BE | Lot 38 | CHORUS NEW ZEALAND LIMITED |
| | B, BF | Lot 39 | |
| | C, BG | Lot 40 | |
| | D | Lot 41 | |
| | E | Lot 42 | |
| | F, BH | Lot 70 | |
| | G, BJ | Lot 71 | |
| | H, BK | Lot 72 | |
| | J | Lot 88 | |
| | K | Lot 89 | |
| | AZ, BB | Lot 20 | |
| | BA, BC | Lot 660 | |
| RIGHT OF WAY | CM | Lot 8 | Lot 9 |

| | | | |
|---|--------|----------|----------------------------------|
| RIGHT TO CONVEY ELECTRICITY IN GROSS | BD | Lot 6000 | MAINPOWER NEW ZEALAND LIMITED |
| | BL | Lot 5000 | |
| | BM | Lot 19 | |
| | BN | Lot 2000 | |
| | BO | Lot 31 | |
| | BP | Lot 35 | |
| | BQ | Lot 37 | |
| | BR | Lot 43 | |
| | BS | Lot 28 | |
| | BT | Lot 54 | |
| | BU | Lot 115 | |
| | BV | Lot 113 | |
| | BW | Lot 111 | |
| | BX | Lot 110 | |
| | BY | Lot 107 | |
| | BZ | Lot 105 | |
| | CA | Lot 103 | |
| | CB | Lot 101 | |
| | CC | Lot 96 | |
| | CD | Lot 94 | |
| CE | Lot 92 | | |
| CF | Lot 90 | | |
| CG | Lot 87 | | |
| CH | Lot 74 | | |
| CJ | Lot 83 | | |
| CK | Lot 81 | | |
| RIGHT TO CONVEY ELECTRICITY | BE | Lot 38 | Lot 34 |
| | BF | Lot 39 | |
| | BG | Lot 40 | |
| | BH | Lot 70 | Lot 73 |
| | BJ | Lot 71 | |
| | BK | Lot 72 | |
| | BB | Lot 20 | Lot 661 |
| | BC | Lot 660 | |
| CL | Lot 17 | Lot 16 | |



Diag. A



Amalgamation Condition
 Lots 7001, 7002 and Pt. RS 366A (CB36D/778) hereon shall be amalgamated and one Certificate of Title issued for all parcels (LINZ ref: 10/23379)

T 1/18

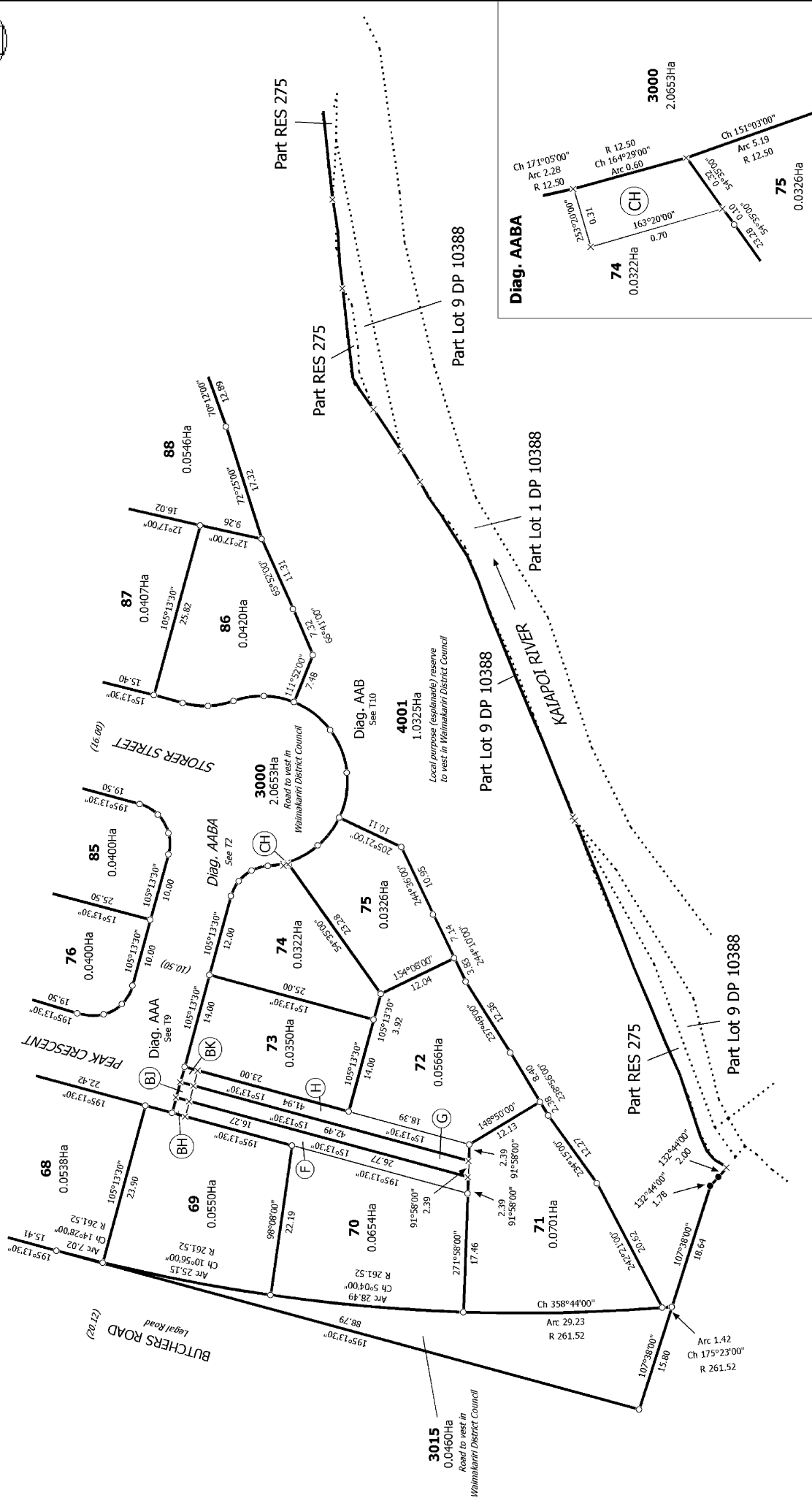
Lots 1-116, 660, 661, 2000-2002, 3000, 3015, 3016, 4000, 4001, 5000-5003, 6000, 6001, 7001 and 7002 being Subdivision of Section 2 SO 18794, Pt Lot 1 DP 4115 and Pt Lot 1 DP 8595

Surveyor: Russel Thomas Bengie
 Firm: Davis Ogilvie & Partners Ltd (Christch

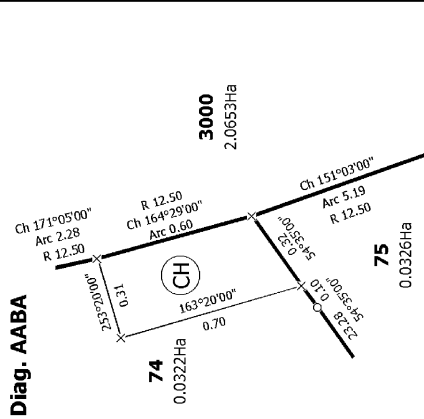
Title Plan
 DP 453541
 Deposited on: 28/06/2012



Diag. AA



Diag. AABA



T 2/18

Land District: Canterbury
 Digitally Generated Plan
 Generated on: 26/07/2012 4:51pm Page 11 of 27

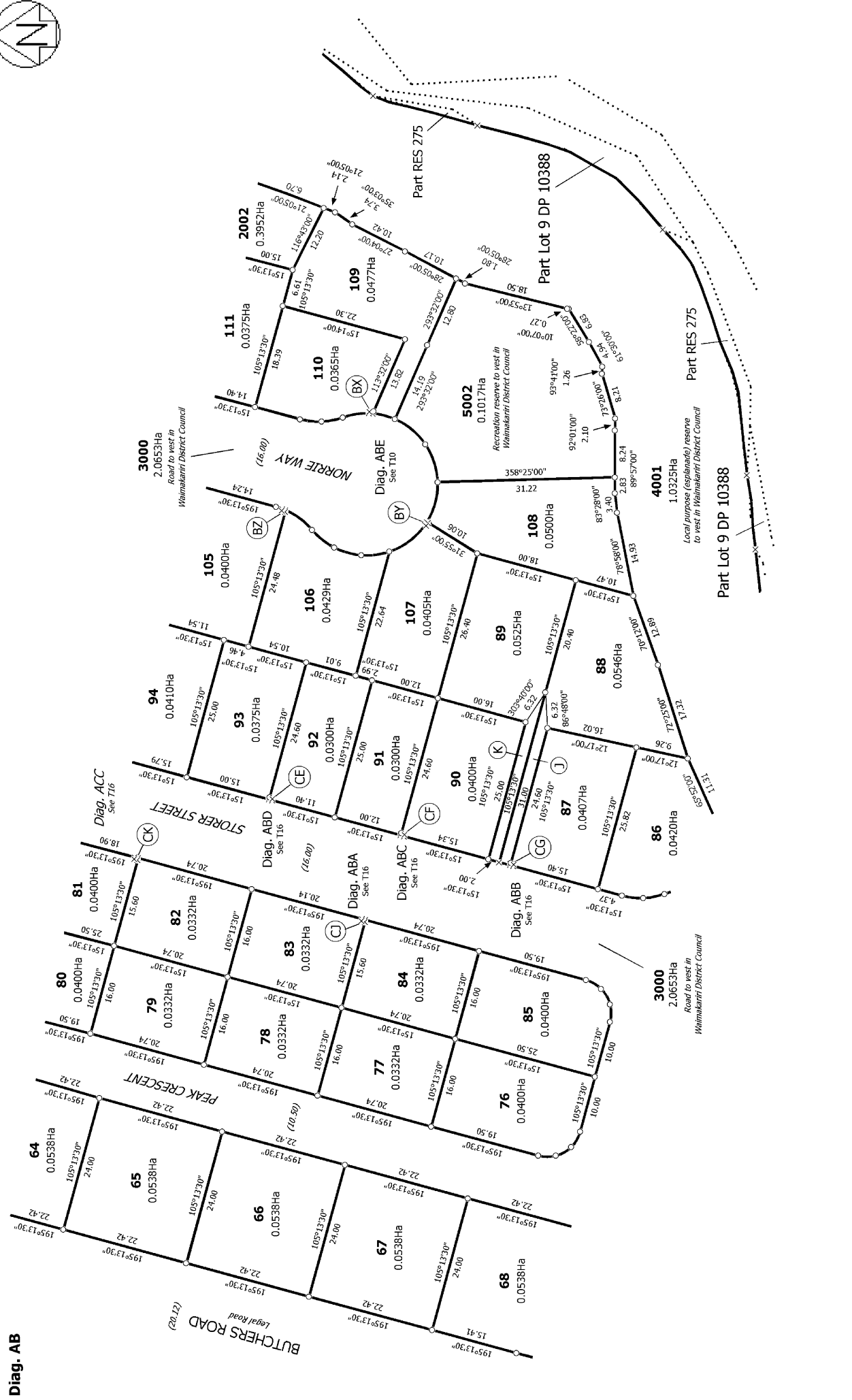
Surveyor: Russel Thomas Bengie
 Firm: Davis Ogilvie & Partners Ltd (Christch)

Lots 1-116, 660, 661, 2000-2002, 3000, 3015, 4000, 4001, 5000-5003, 6000, 6001, 7001 and 7002 being Subdivision of Section 2 SO 18794, Pt Lot 1 DP 4115 and Pt Lot 1 DP 8595

Title Plan
 DP 453541
 Deposited on: 28/06/2012



Diag. AB



T 3/18

Land District: Canterbury

Digitally Generated Plan
Generated on: 26/07/2012 4:51pm Page 12 of 27

Surveyor: Russel Thomas Bengt
Firm: Davis Ogilvie & Partners Ltd (Christch

Lots 1-116, 660, 661, 2000-2002, 3000, 3015, 3016, 4000, 4001, 5000-5003,
6000, 6001, 7001 and 7002 being Subdivision of Section 2 SO 18794, Pt Lot 1 DP
4115 and Pt Lot 1 DP 8595

Title Plan
DP 453541
Deposited on: 28/06/2012



Part Lot 1 DP 10388



Diag. AD

T 5/18

Title Plan

Surveyor: Russel Thomas Bengie

Firm: Davis Ogilvie & Partners Ltd (Christch

Lots 1-116, 660, 661, 2000-2002, 3000, 3015, 3016, 4000, 4001, 5000-5003,

6000, 6001, 7001 and 7002 being Subdivision of Section 2 SO 18794, Pt Lot 1 DP

4115 and Pt Lot 1 DP 8595

Land District: Canterbury

DP 453541

Diag. ADE See T12

Diag. ADC See T5

Diag. ADB See T11

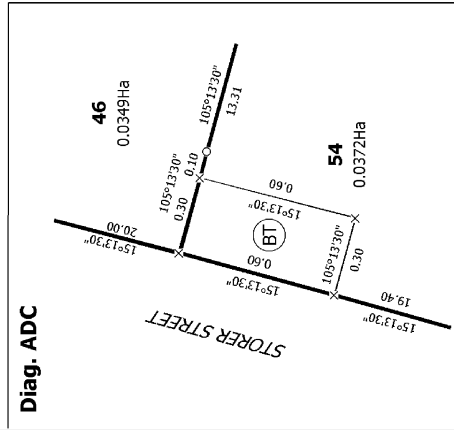
Diag. AE See T12

Diag. AI See T14

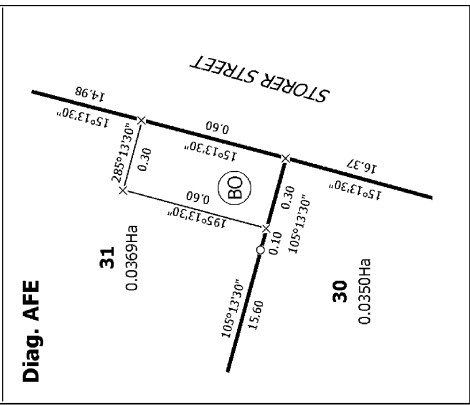
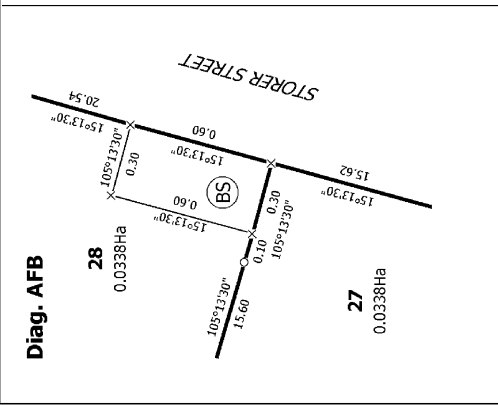
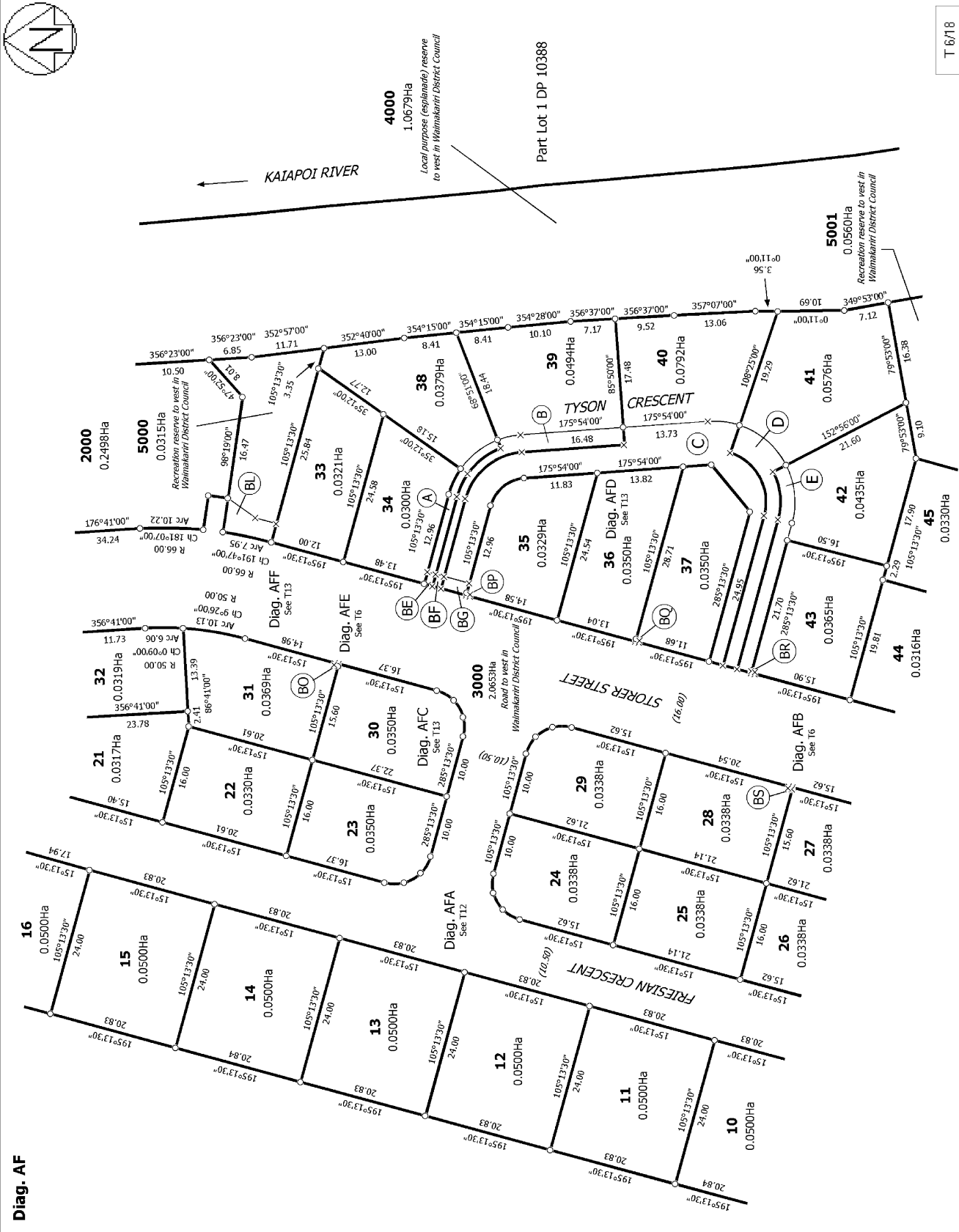
Digitally Generated Plan

Generated on: 26/07/2012 4:51pm Page: 14 of 27

Deposited on: 28/06/2012



Diag. ADC



T 6/18

Land District: Canterbury
 Digitally Generated Plan
 Generated on: 26/07/2012 4:51pm Page: 15 of 27

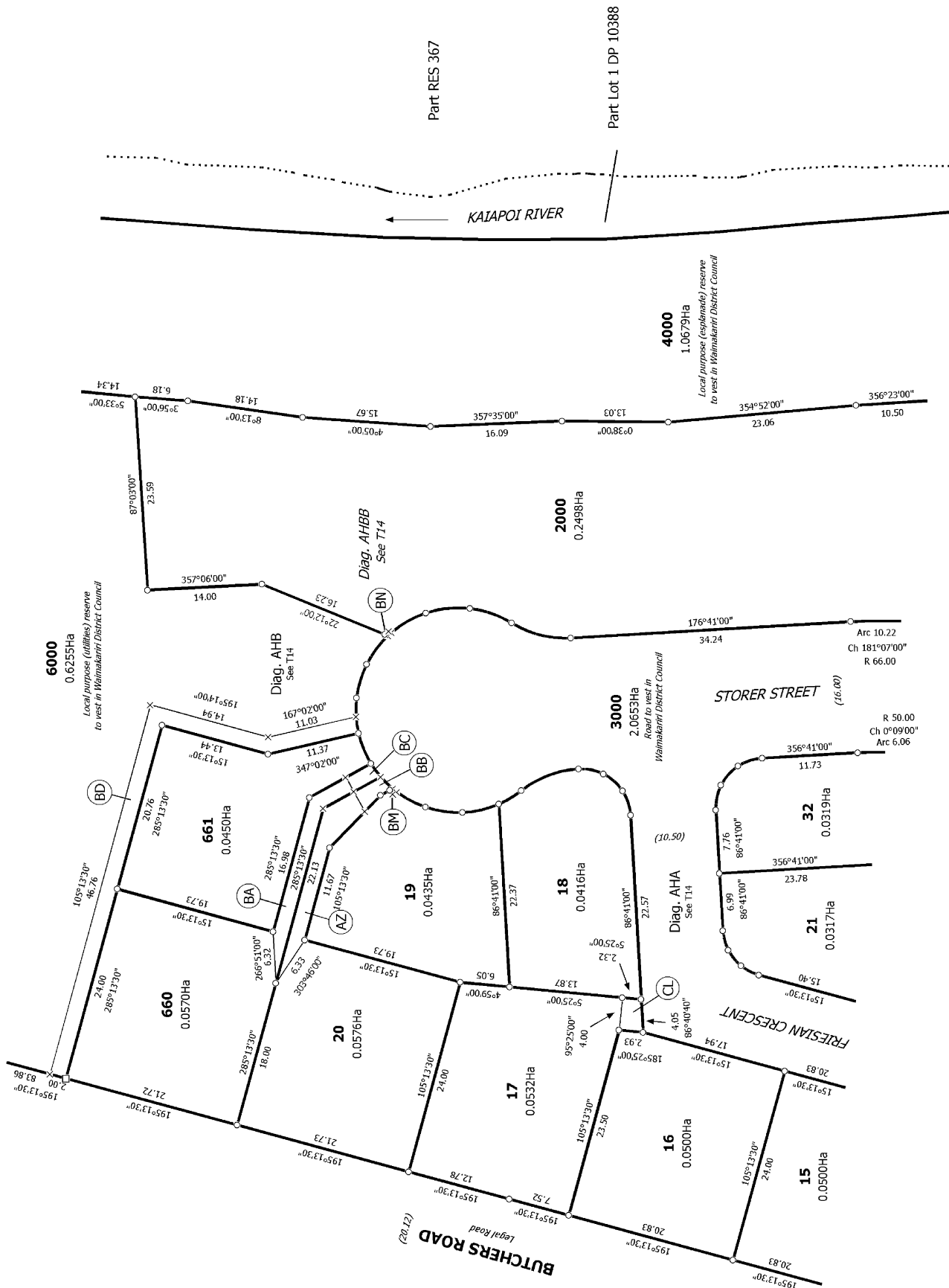
Surveyor: Russel Thomas Bengie
 Firm: Davis Ogilvie & Partners Ltd (Christch

Title Plan
 DP 453541
 Deposited on: 28/06/2012

Lots 1-116, 660, 661, 2000-2002, 3000, 3015, 3016, 4000, 4001, 5000-5003,
 6000, 6001, 7001 and 7002 being Subdivision of Section 2 SO 18794, Pt Lot 1 DP
 4115 and Pt Lot 1 DP 8595



Diag. AH



T 7/18

Land District: Canterbury

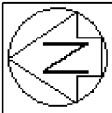
Digitally Generated Plan
Generated on: 26/07/2012 4:51pm Page 15 of 27

Lots 1-116, 660, 661, 2000-2002, 3000, 3015, 4001, 5000-5003,
6000, 6001, 7001 and 7002 being Subdivision of Section 2 SO 18794, Pt Lot 1 DP
4115 and Pt Lot 1 DP 8595

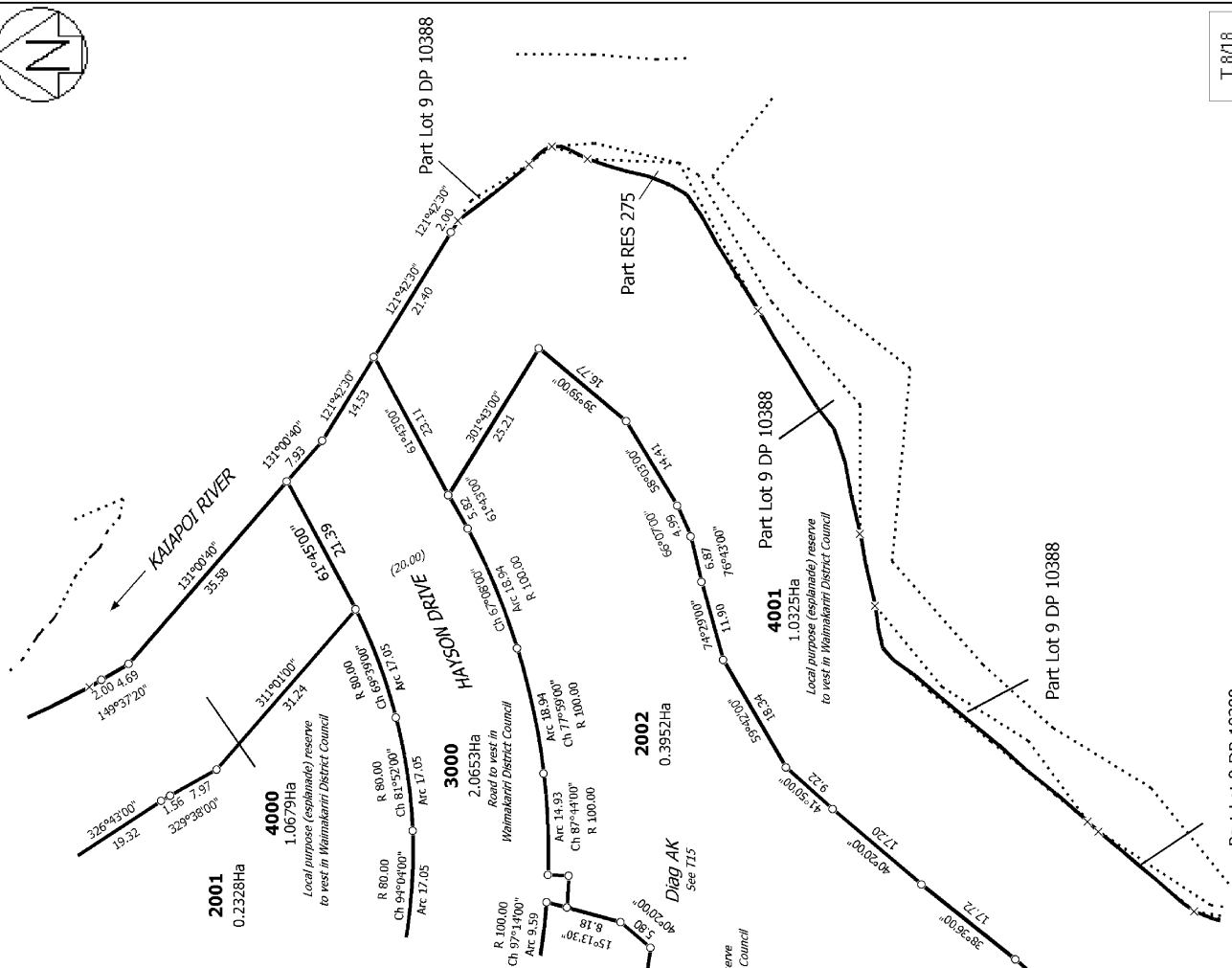
Surveyor: Russel Thomas Bengie
Firm: Davis Ogilvie & Partners Ltd (Christch

Title Plan
DP 453541

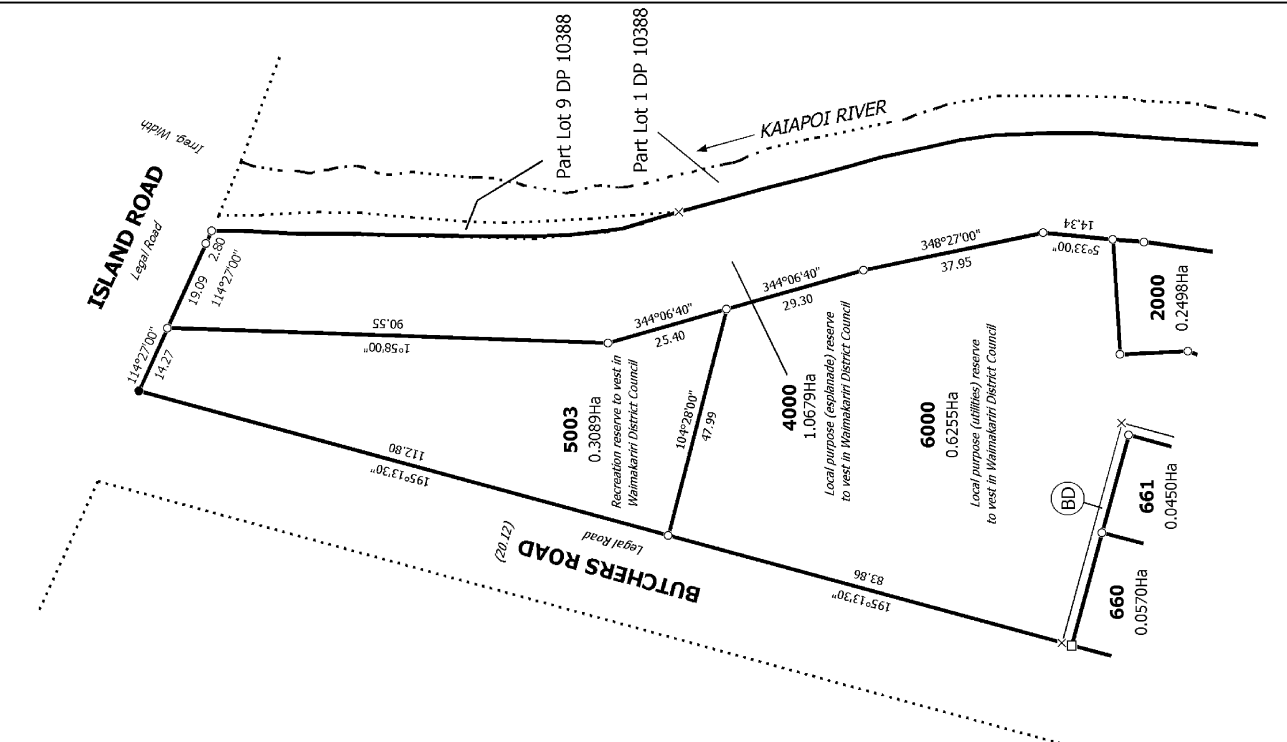
Deposited on: 28/06/2012



Diag. AJ



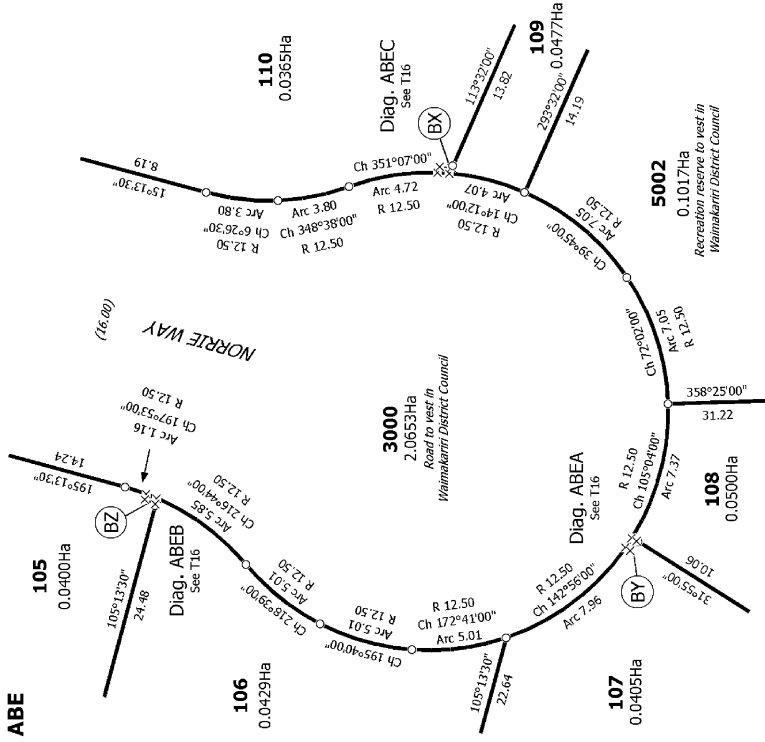
Diag. AG



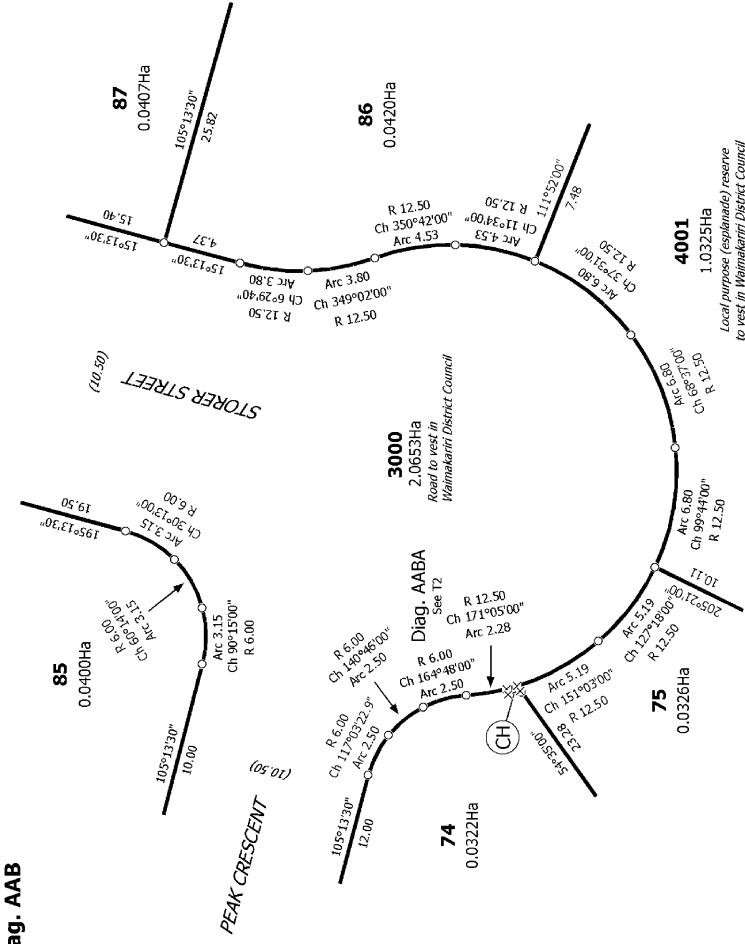
| | | | |
|---|--|--|---------------------|
| T 8/18 | Title Plan DP 453541 | Part Lot 9 DP 10388 | Part Lot 9 DP 10388 |
| Land District: Canterbury | Surveyor: Russel Thomas Bengie Firm: Davis Ogilvie & Partners Ltd (Christch | Lots 1-116, 660, 661, 2000-2002, 3000, 3015, 4001, 5000-5003, 6000, 6001, 7001 and 7002 being Subdivision of Section 2 SO 18794, Pt Lot 1 DP 4115 and Pt Lot 1 DP 8595 | Part Lot 9 DP 10388 |
| Digitally Generated Plan Generated on: 26/07/2012 4:51pm Page 17 of 27 | Deposited on: 28/06/2012 | | |



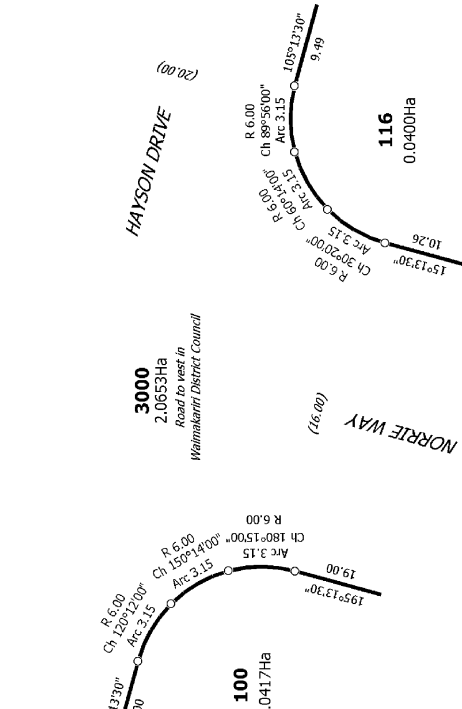
Diag. ABE



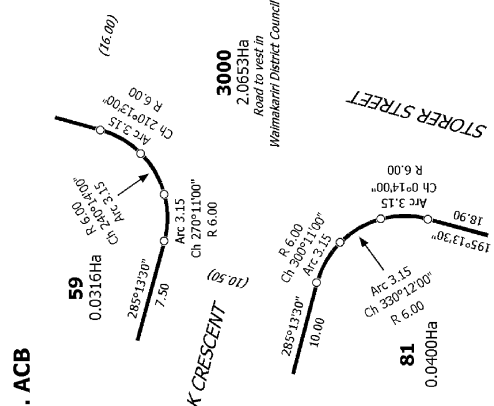
Diag. AAB



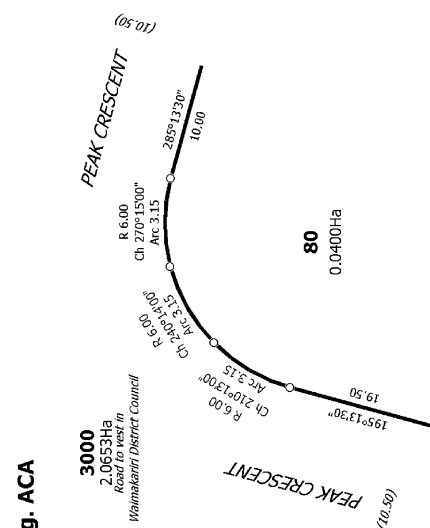
Diag. ACC



Diag. ACB



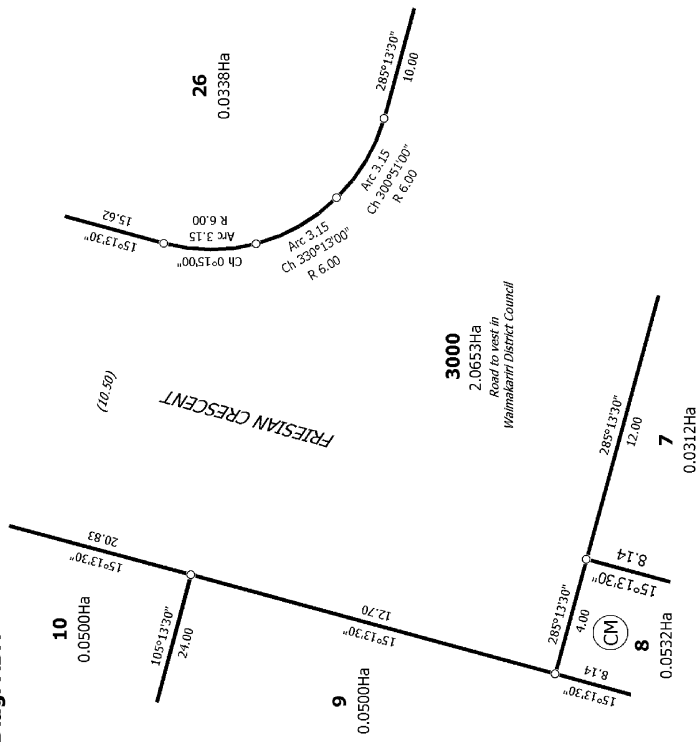
Diag. ACA



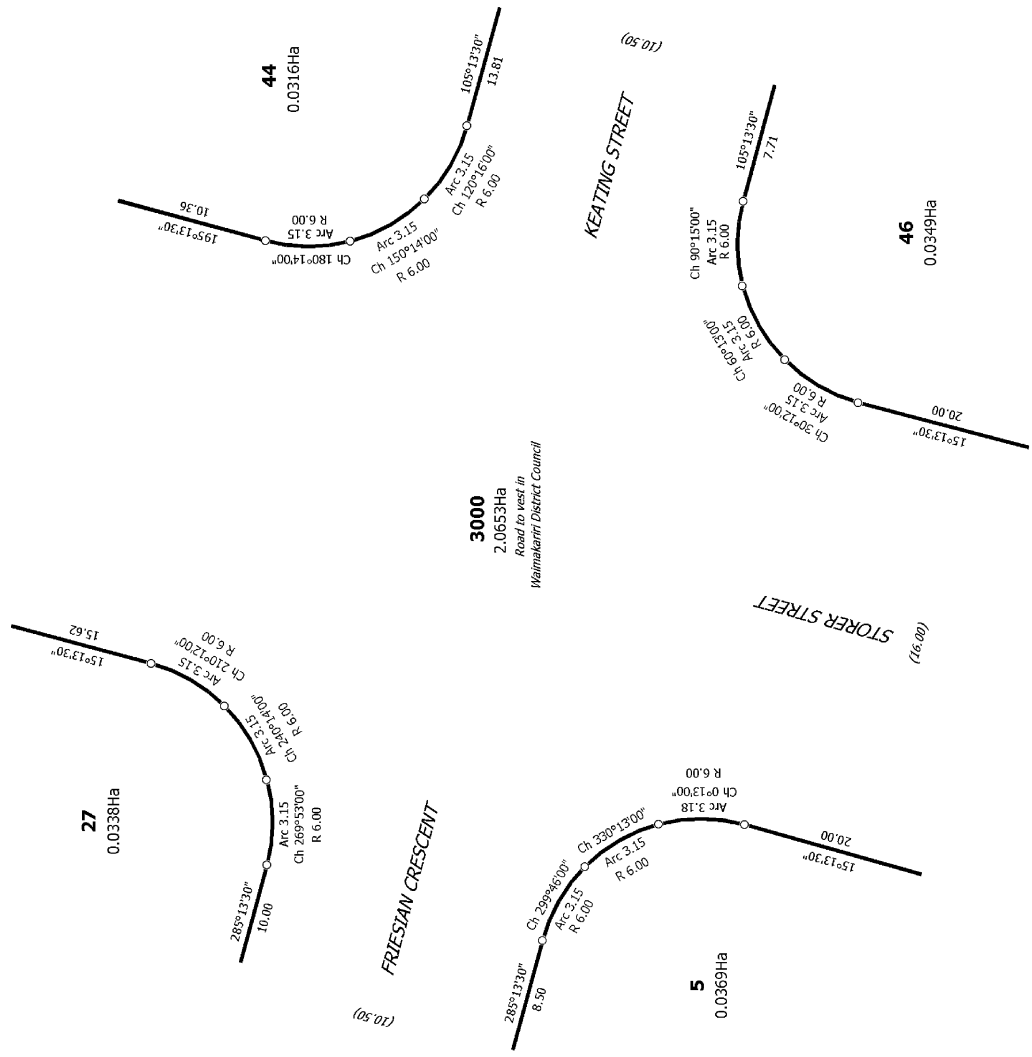
T 10/18



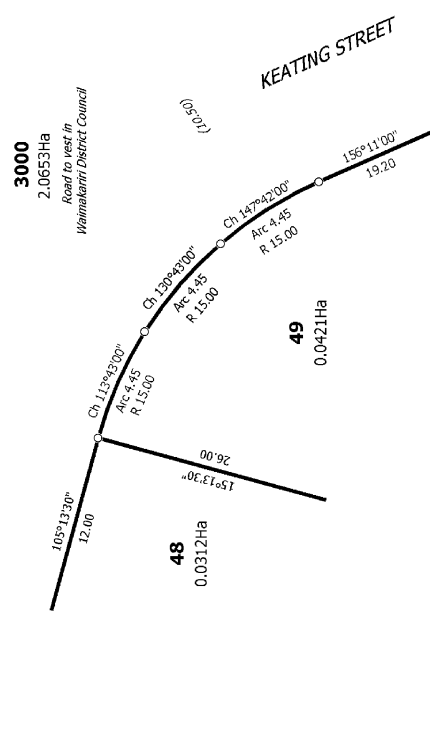
Diag. ADA



Diag. ADB



Diag. ADD



T 11/18

Land District: Canterbury

Digitally Generated Plan

Generated on: 26/07/2012 4:51pm Page 20 of 27

Lots 1-116, 660, 661, 2000-2002, 3000, 3015, 3016, 4000, 4001, 5000-5003,
 6000, 6001, 7001 and 7002 being Subdivision of Section 2 SO 18794, Pt Lot 1 DP
 4115 and Pt Lot 1 DP 8595

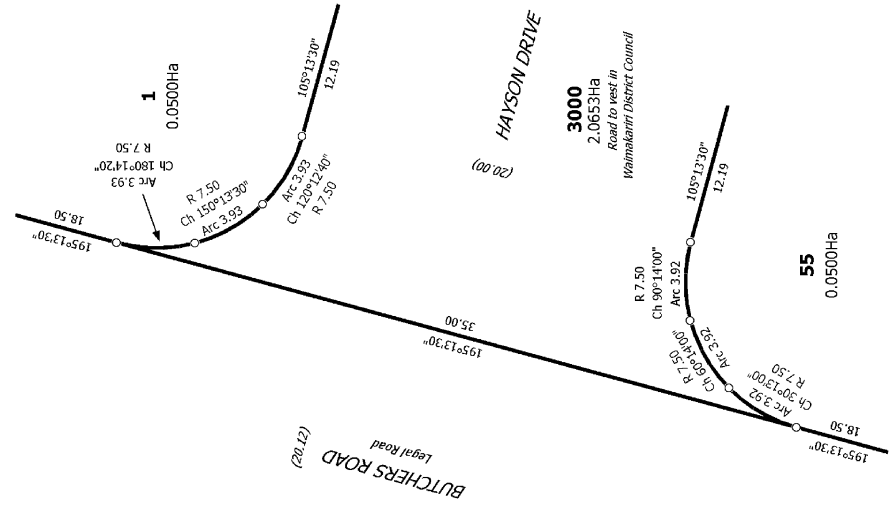
Surveyor: Russel Thomas Bengie
 Firm: Davis Ogilvie & Partners Ltd (Christch

Title Plan
 DP 453541

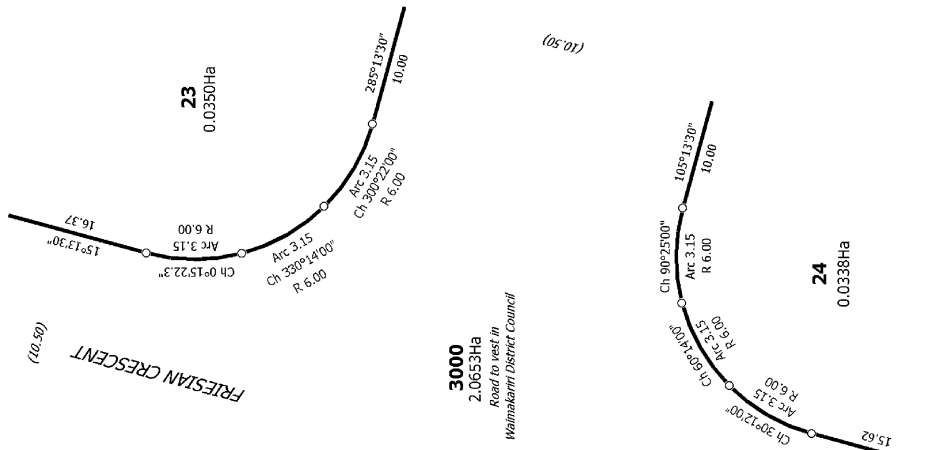
Deposited on: 28/06/2012



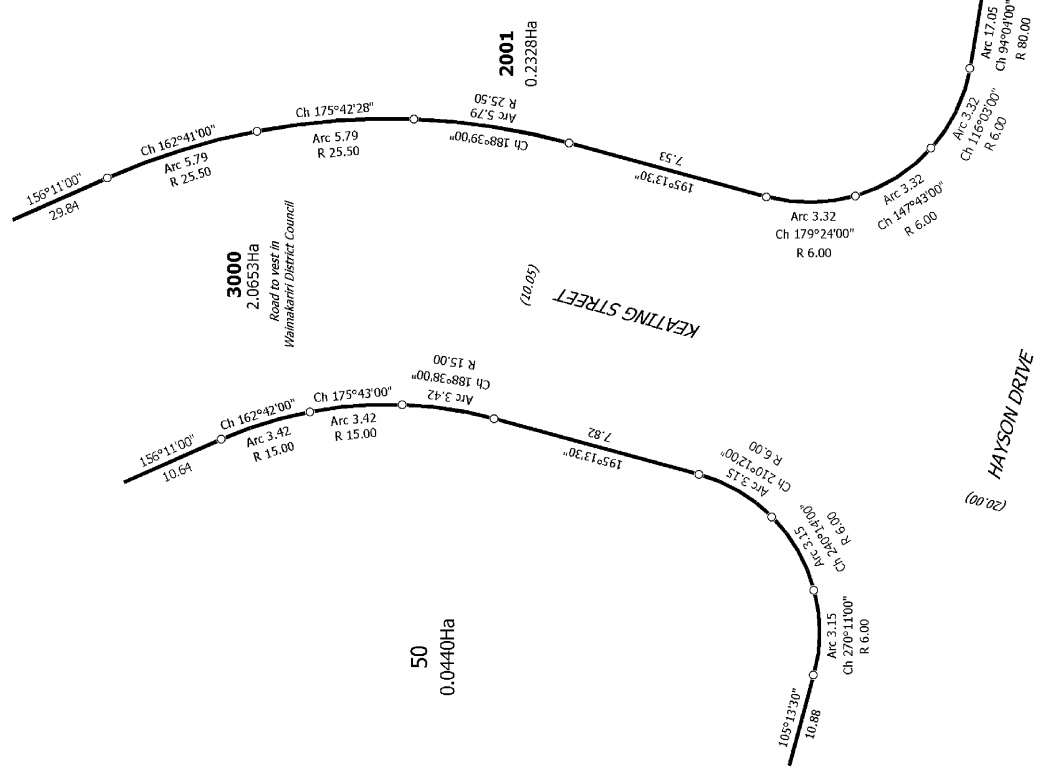
Diag. AE



Diag. AFA



Diag. ADE



T 12/18

Land District: Canterbury

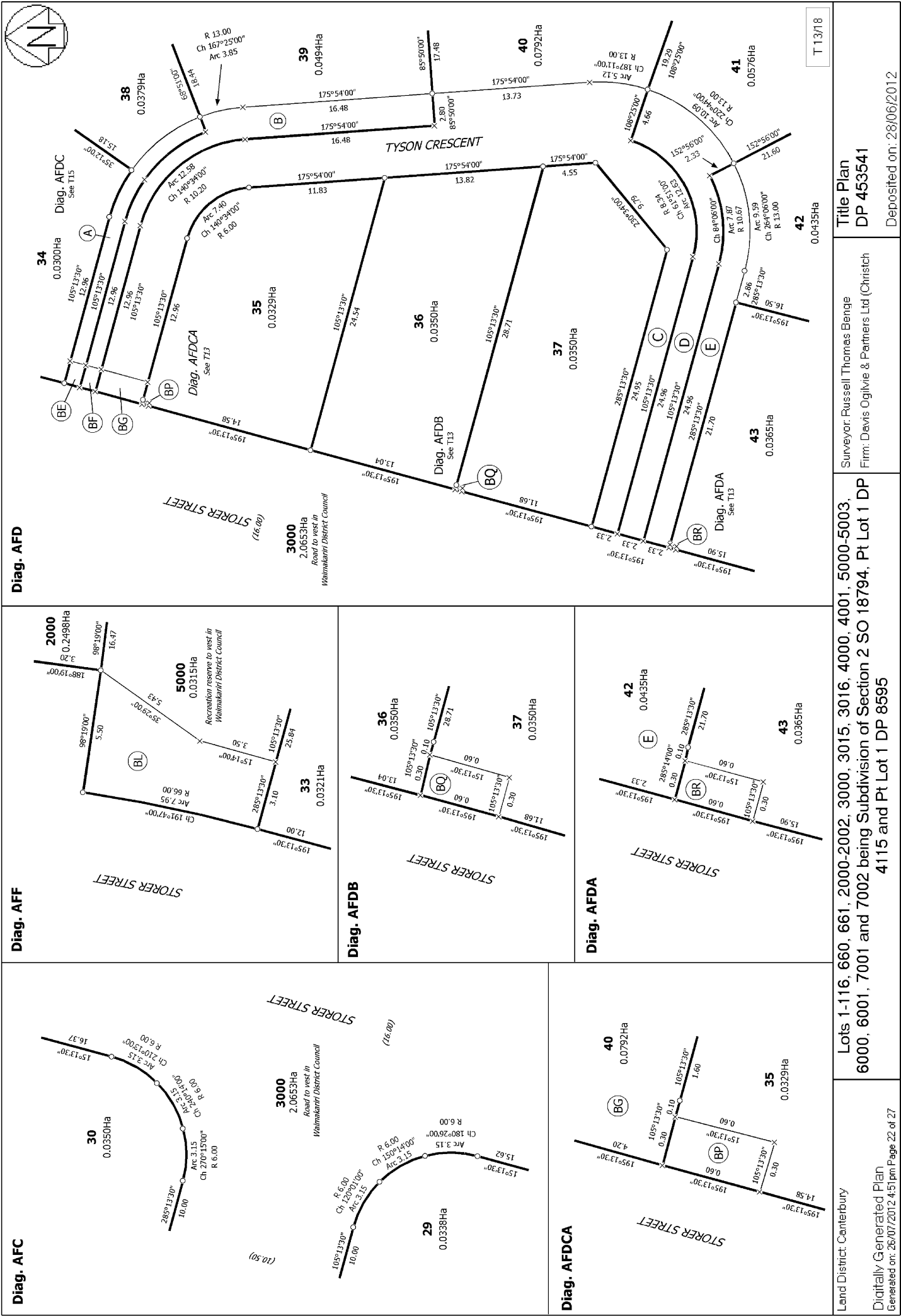
Digitally Generated Plan
Generated on: 26/07/2012 4:51pm Page 21 of 27

Lots 1-116, 660, 661, 2000-2002, 3000, 3015, 3016, 4000, 4001, 5000-5003,
6000, 6001, 7001 and 7002 being Subdivision of Section 2 SO 18794, Pt Lot 1 DP
4115 and Pt Lot 1 DP 8595

Surveyor: Russel Thomas Bengie
Firm: Davis Ogilvie & Partners Ltd (Christch

Title Plan
DP 453541

Deposited on: 28/06/2012



Diag. AFD

Diag. AFF

Diag. AFC

Diag. AFDB

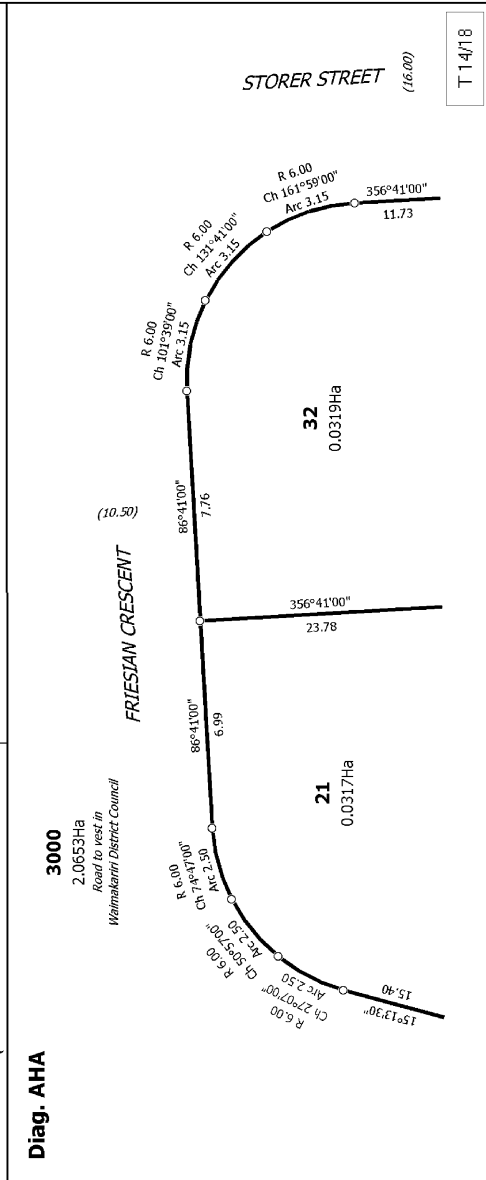
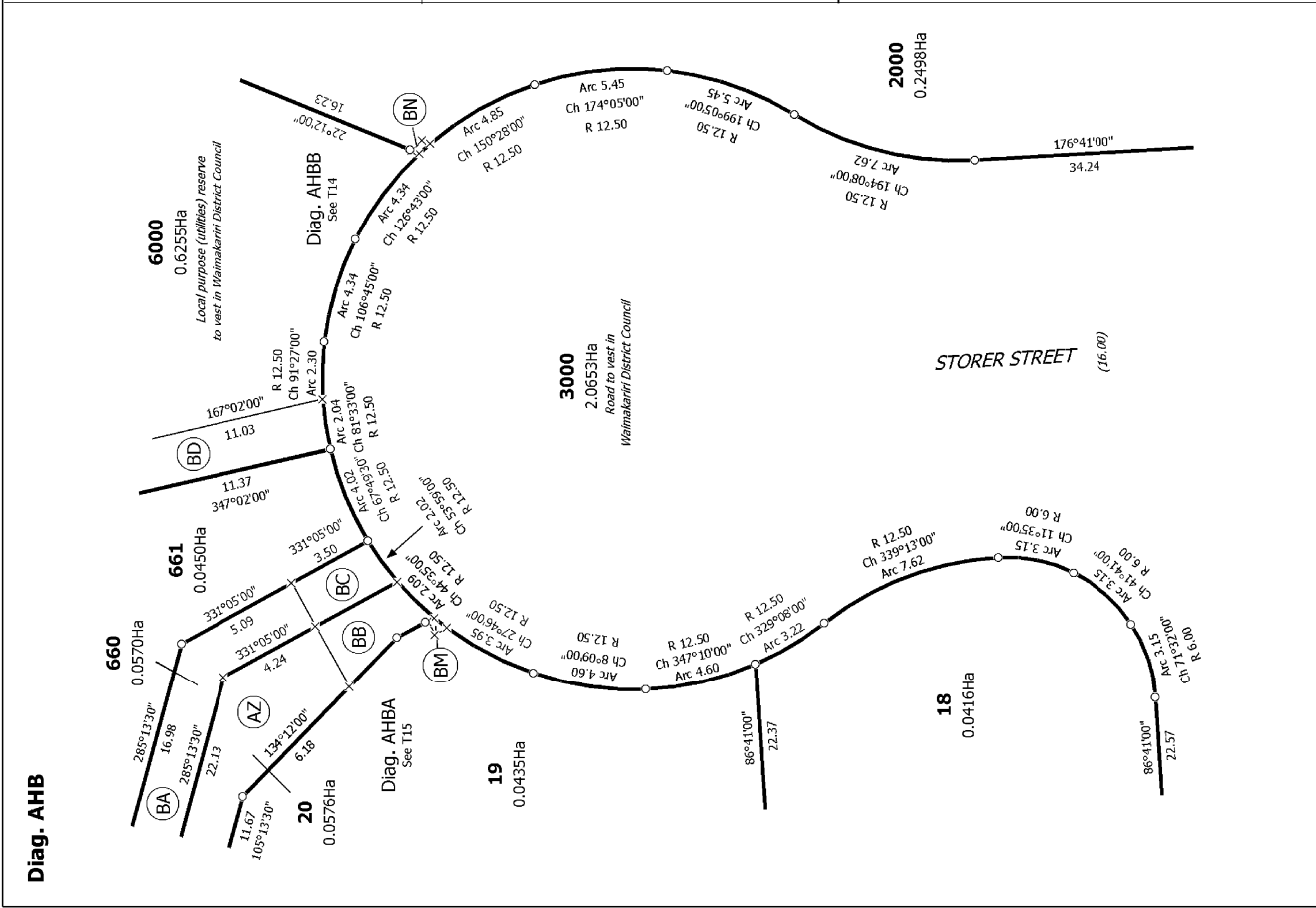
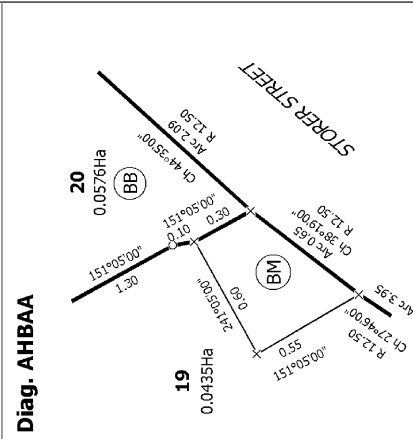
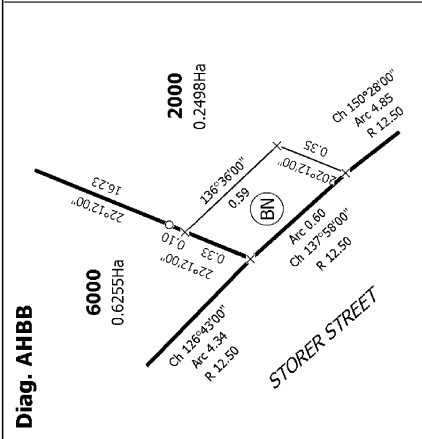
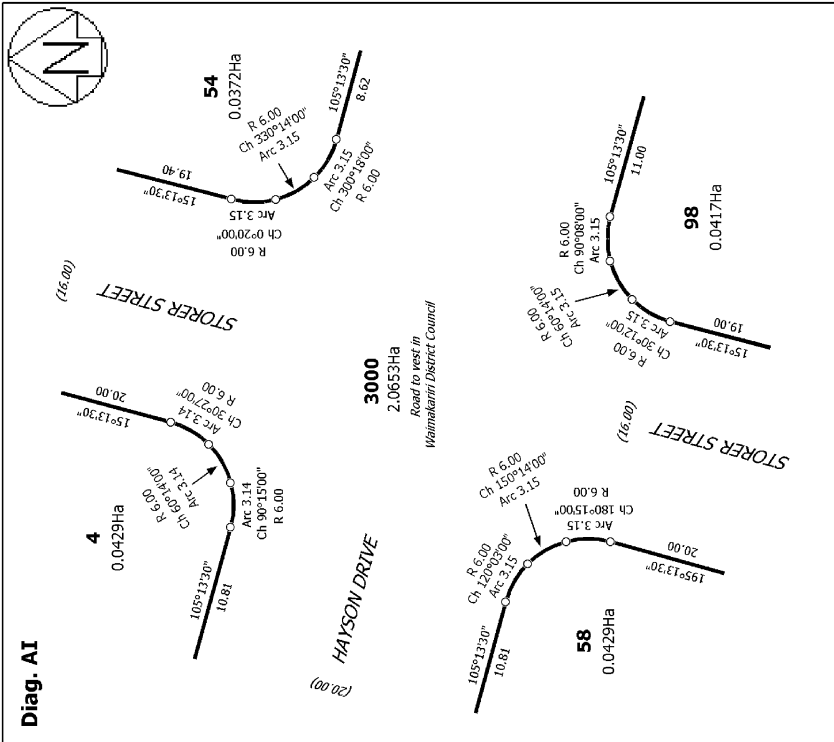
Diag. AFDA

Title Plan
 DP 453541
 Deposited on: 28/06/2012

Surveyor: Russel Thomas Benge
 Firm: Davis Ogilvie & Partners Ltd (Christch

Lots 1-116, 660, 661, 2000-2002, 3000, 3015, 3016, 4000, 4001, 5000-5003,
 6000, 6001, 7001 and 7002 being Subdivision of Section 2 SO 18794, Pt Lot 1 DP
 4115 and Pt Lot 1 DP 8595

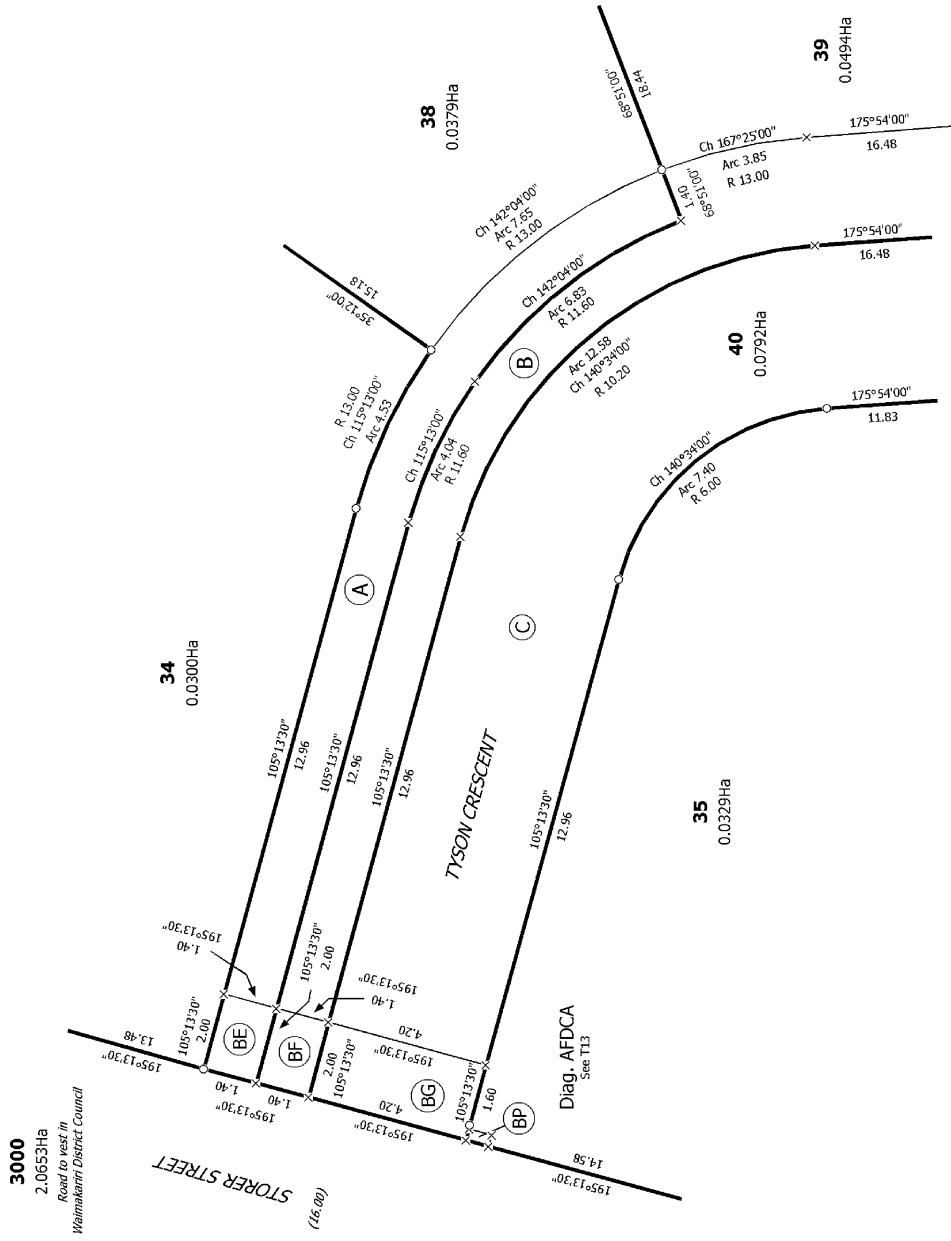
Land District: Canterbury
 Digitally Generated Plan
 Generated on: 26/07/2012 4:51pm Page 22 of 27



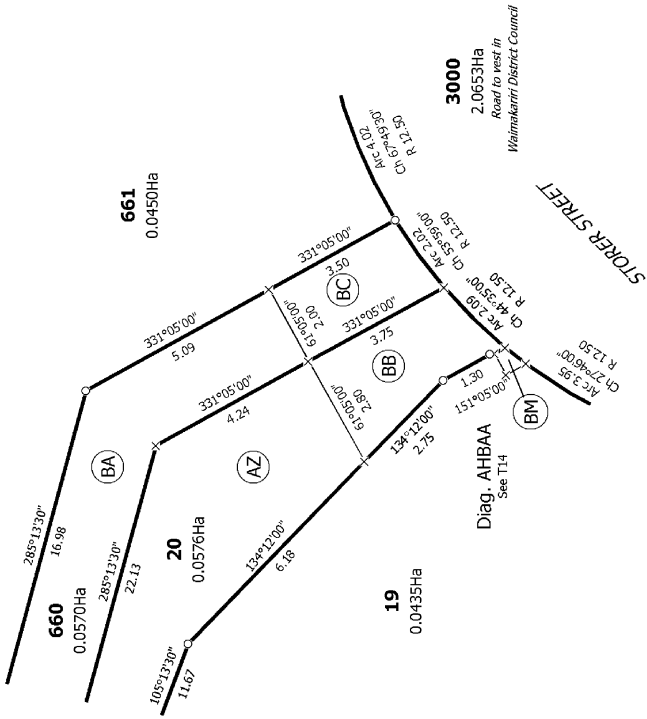
| | | |
|---|---|----------------|
| <p>Land District: Canterbury</p> | <p>Surveyor: Russel Thomas Benge Firm: Davis Ogilvie & Partners Ltd (Christch</p> | <p>T 14/18</p> |
| <p>Lots 1-116, 660, 661, 2000-2002, 3000, 3015, 3016, 4000, 4001, 5000-5003, 6000, 6001, 7001 and 7002 being Subdivision of Section 2 SO 18794, Pt Lot 1 DP 4115 and Pt Lot 1 DP 8595</p> <p>Digitally Generated Plan Generated on: 26/07/2012 4:51pm Page 23 of 27</p> <p>Title Plan DP 453541</p> <p>Deposited on: 28/06/2012</p> | | |



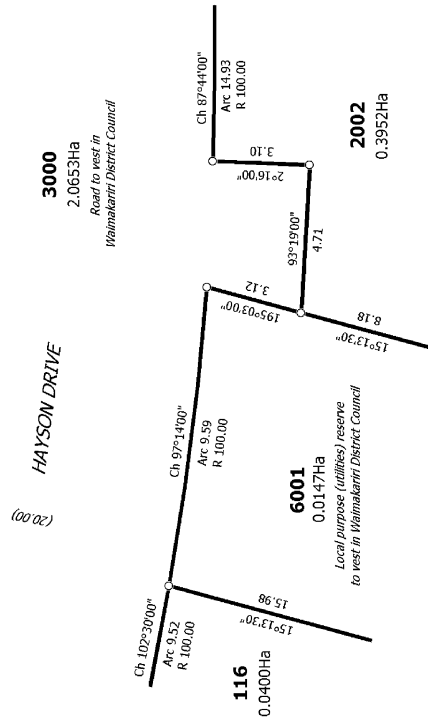
Diag. AFDC



Diag. AHBA



Diag. AK



T 15/18

Land District: Canterbury

Digitally Generated Plan

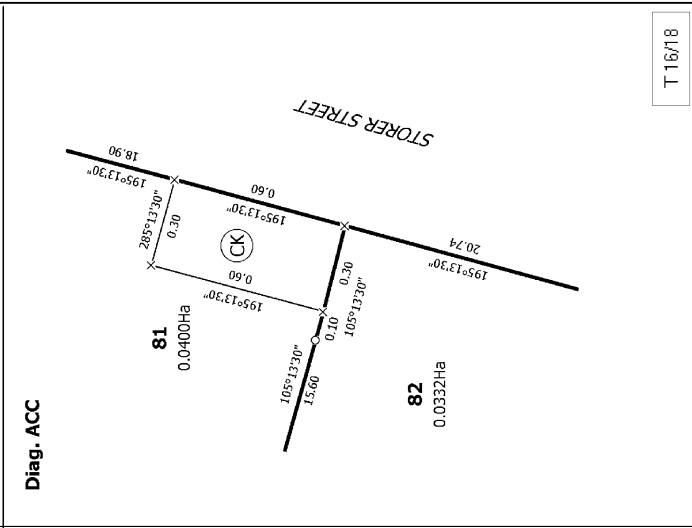
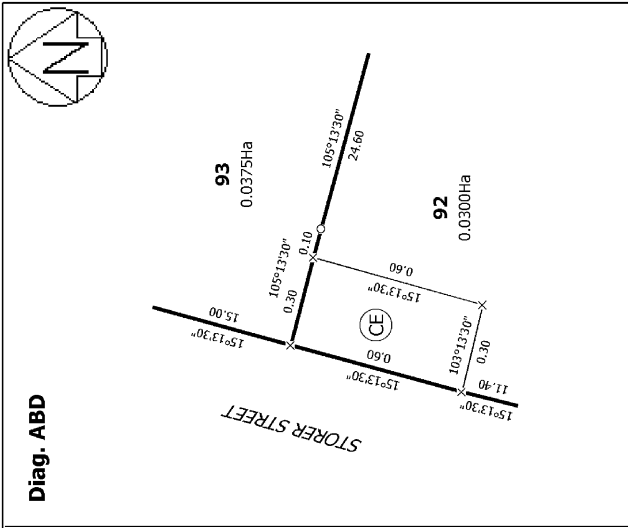
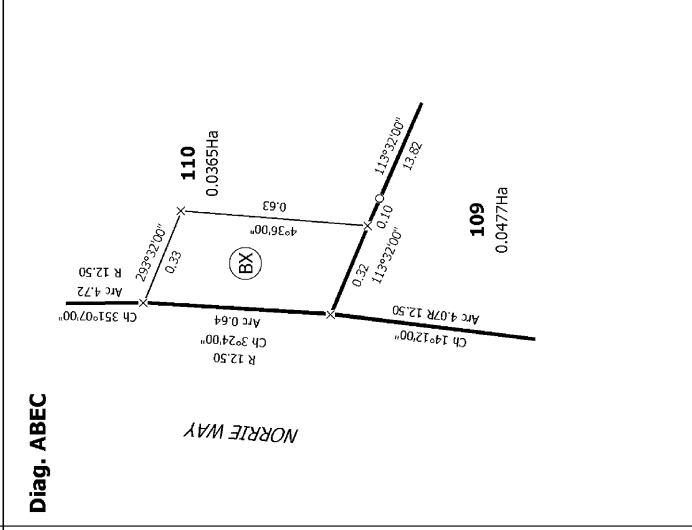
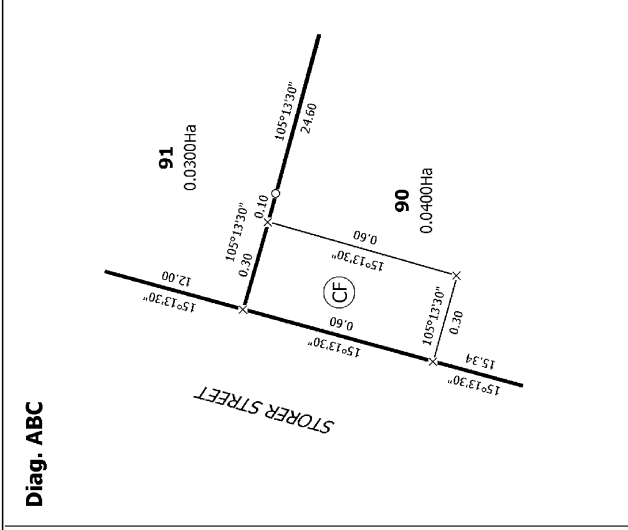
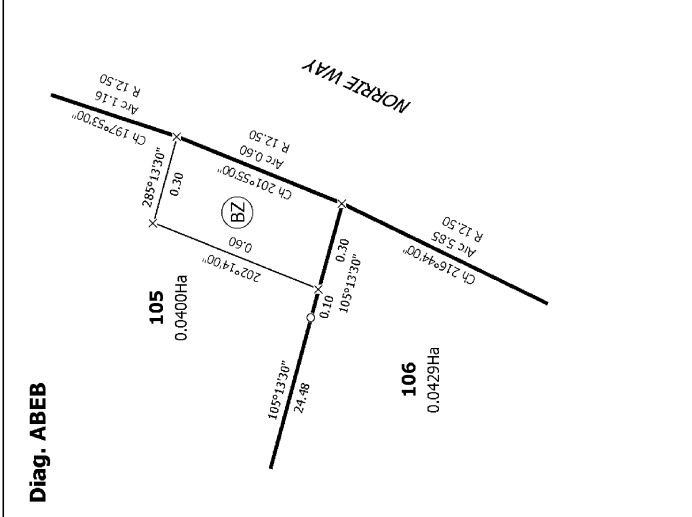
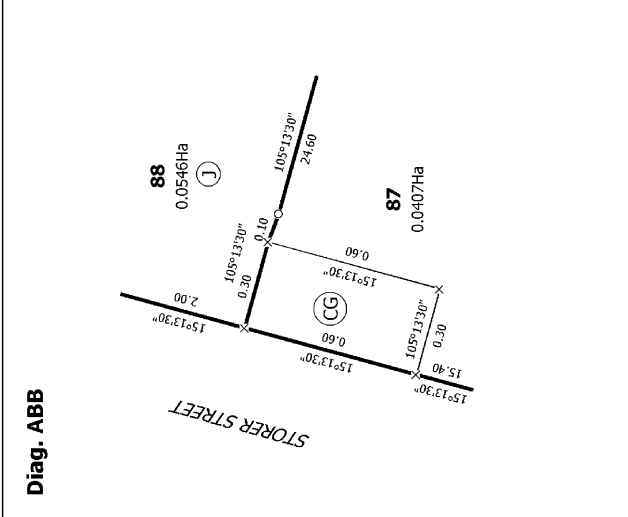
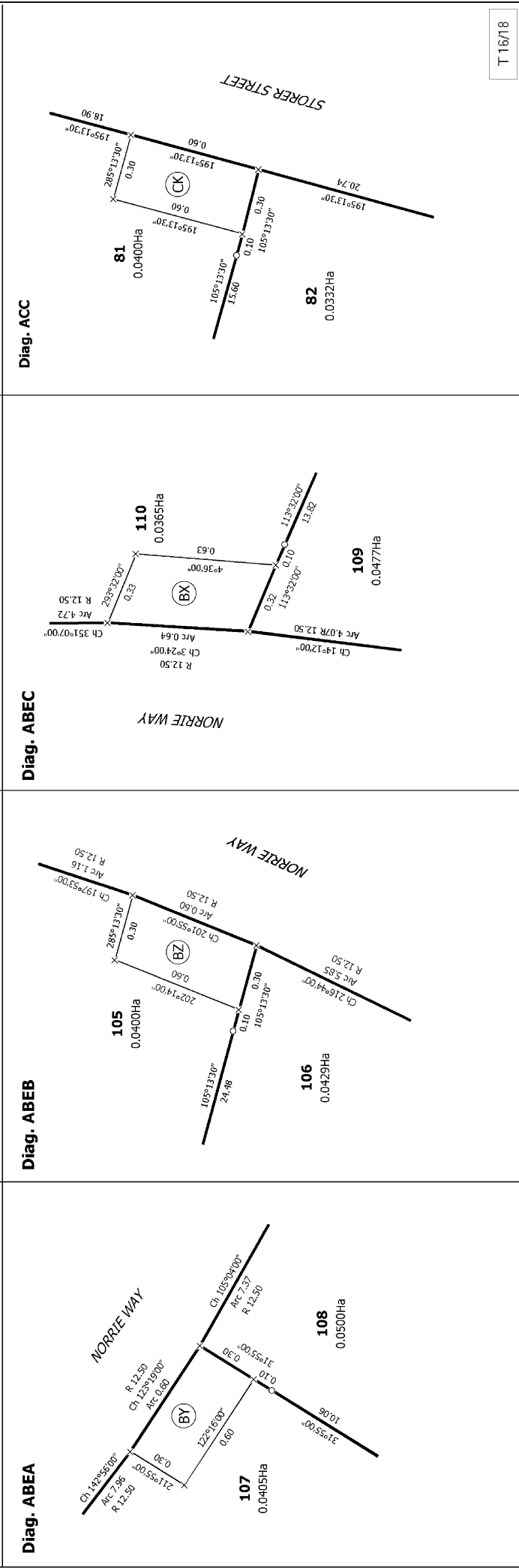
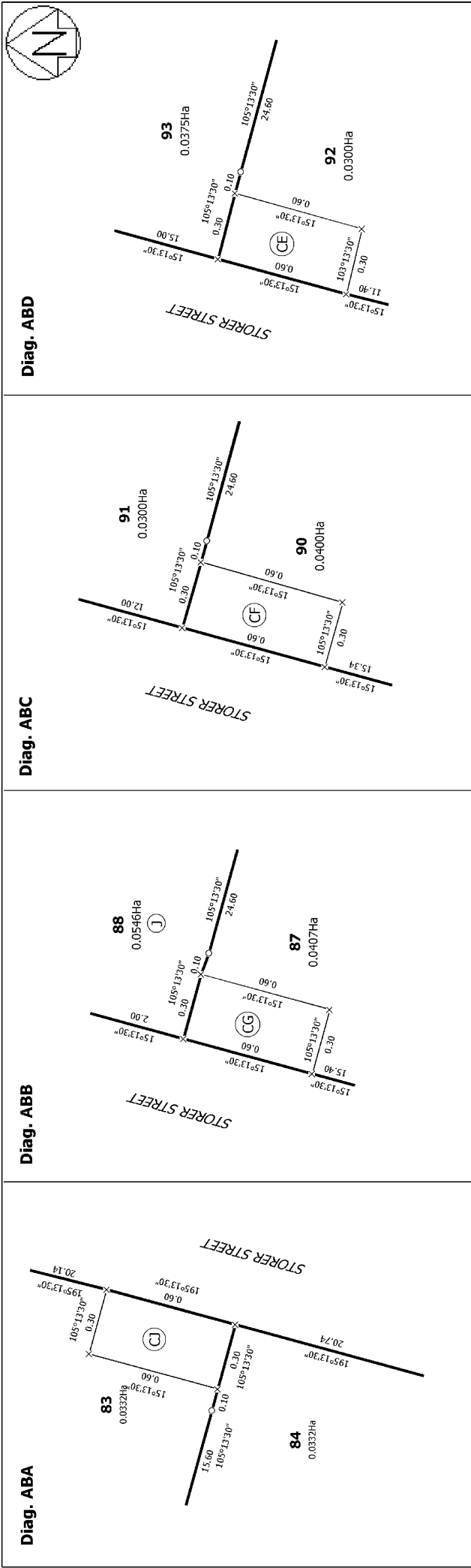
Generated on: 26/07/2012 4:51pm Page 24 of 27

Lots 1-116, 660, 661, 2000-2002, 3000, 3015, 3016, 4000, 4001, 5000-5003,
6000, 6001, 7001 and 7002 being Subdivision of Section 2 SO 18794, Pt Lot 1 DP
4115 and Pt Lot 1 DP 8595

Surveyor: Russel Thomas Bengie
Firm: Davis Ogilvie & Partners Ltd (Christch

Title Plan
DP 453541

Deposited on: 28/06/2012



Land District: Canterbury

Digitally Generated Plan
 Generated on: 26/07/2012 4:51pm Page: 25 of 27

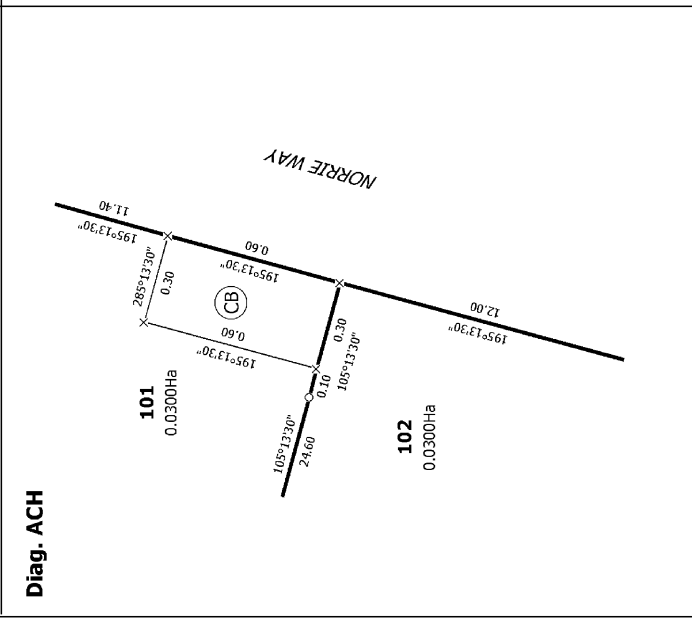
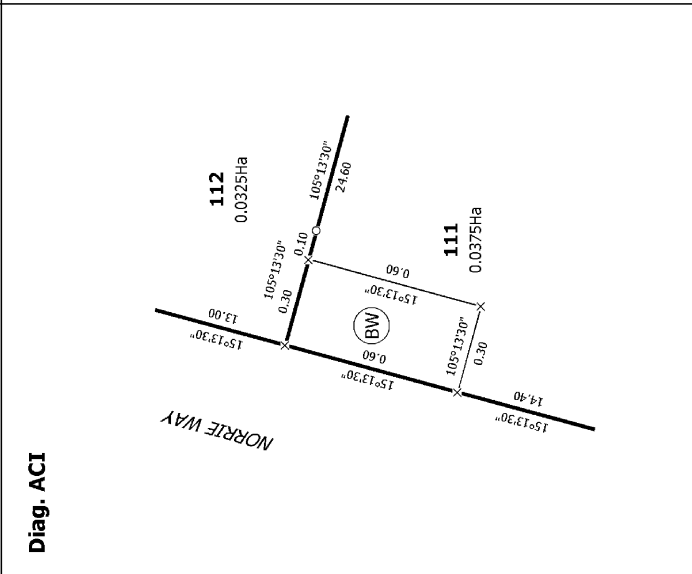
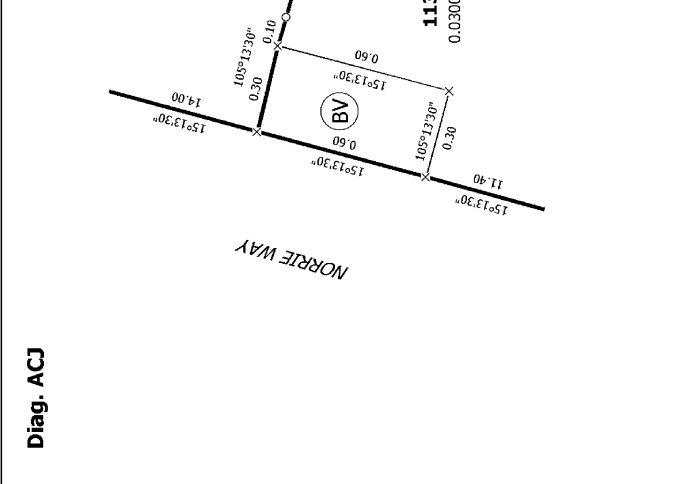
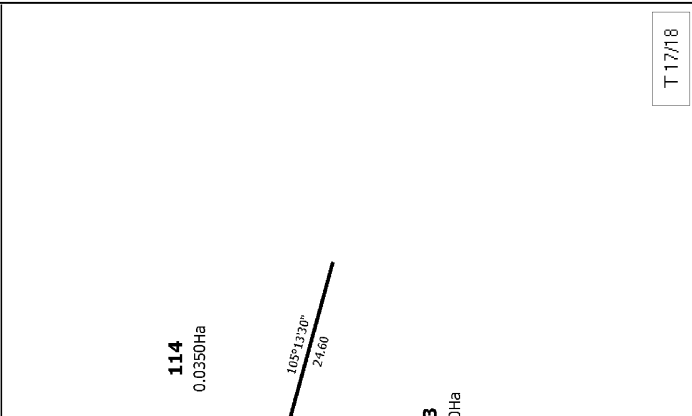
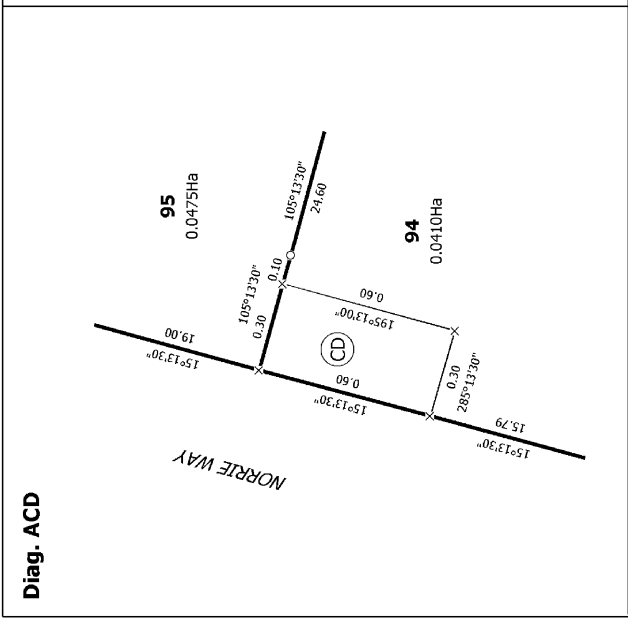
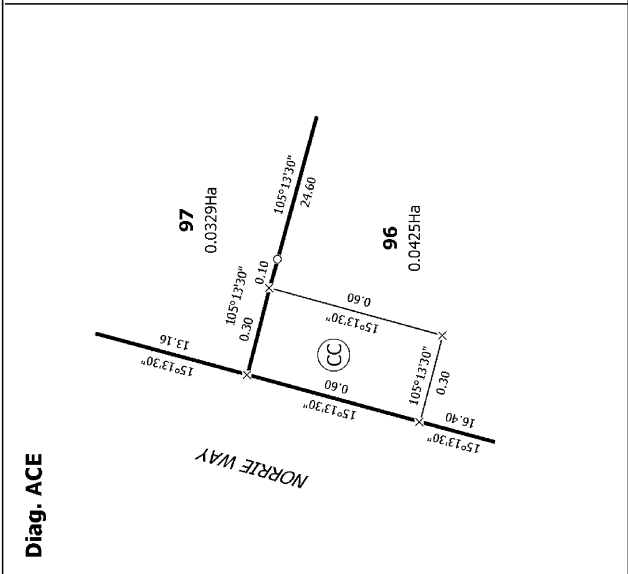
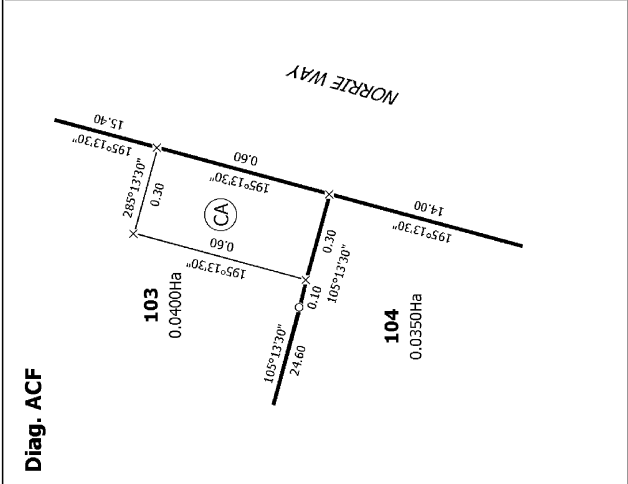
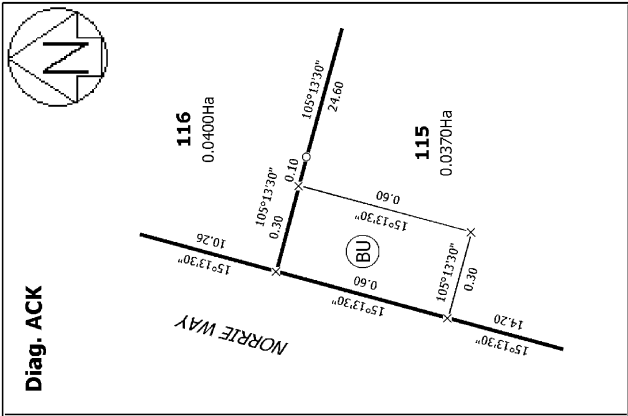
Lots 1-116, 660, 661, 2000-2002, 3000, 3015, 3016, 4000, 4001, 5000-5003, 6000, 6001, 7001 and 7002 being Subdivision of Section 2 SO 18794, Pt Lot 1 DP 4115 and Pt Lot 1 DP 8595

Surveyor: Russel Thomas Bengie
 Firm: Davis Ogilvie & Partners Ltd (Christch

Title Plan
 DP 453541

Deposited on: 28/06/2012

T 16/18



T 17/18

Land District: Canterbury
Digitally Generated Plan
Generated on: 26/07/2012 4:51pm Page 26 of 27

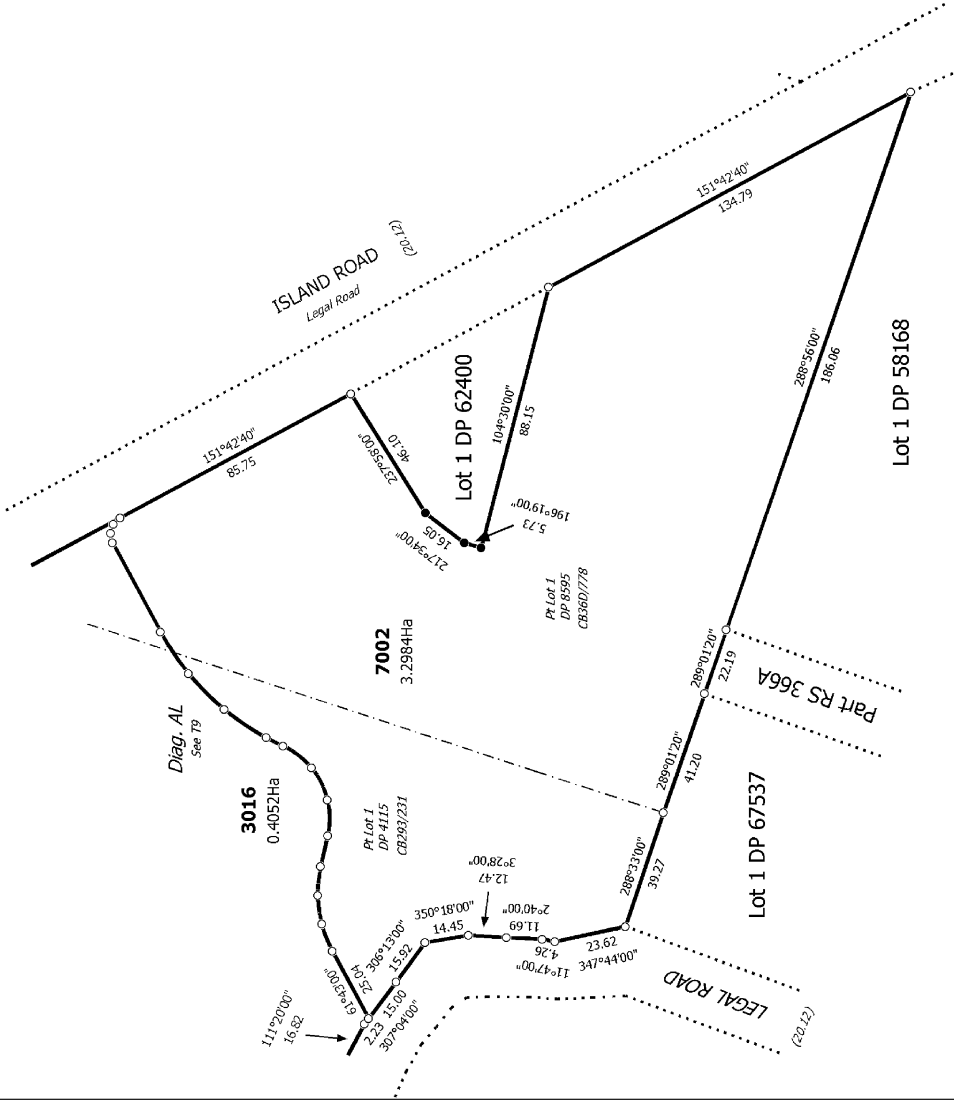
Surveyor: Russell Thomas Bengie
Firm: Davis Ogilvie & Partners Ltd (Christch

Title Plan
DP 453541
Lots 1-116, 660, 661, 2000-2002, 3000, 3015, 3016, 4000, 4001, 5000-5003, 6000, 6001, 7001 and 7002 being Subdivision of Section 2 SO 18794, Pt Lot 1 DP 4115 and Pt Lot 1 DP 8595

Deposited on: 28/06/2012



Diag. AN



Diag. AM



T 18/18

Land District: Canterbury

Digitally Generated Plan
 Generated on: 26/07/2012 4:51pm Page: 27 of 27

Lots 1-116, 660, 661, 2000-2002, 3000, 3015, 3016, 4000, 4001, 5000-5003, 6000, 6001, 7001 and 7002 being Subdivision of Section 2 SO 18794, Pt Lot 1 DP 4115 and Pt Lot 1 DP 8595

Surveyor: Russel Thomas Bengie
 Firm: Davis Ogilvie & Partners Ltd (Christch

Title Plan
 DP 453541

Deposited on: 28/06/2012