



Title Plan - LT 466640

Survey Number LT 466640
Surveyor Reference 29529 - Silverstream Stage 3A
Surveyor Russell Thomas Benge
Survey Firm Davis Ogilvie & Partners Ltd (Christchurch)
Surveyor Declaration I Russell Thomas Benge, being a licensed cadastral surveyor, certify that:
 (a) this dataset provided by me and its related survey are accurate, correct and in accordance with the Cadastral Survey Act 2002 and the Rules for Cadastral Survey 2010, and
 (b) the survey was undertaken by me or under my personal direction.
 Declared on 29 Nov 2013 04:41 PM

Survey Details

Dataset Description Lots 216-245, 257-311, 691-701, 709-718, 2005, 2006, 3003, 3020-3026, 5007, 6005, 7007-7015 being a subdivision of Lot 7004 DP 461956 and Lot 2 DP 8595
Status Submitted
Land District Canterbury **Survey Class** Class A
Submitted Date 29/11/2013 **Survey Approval Date**
Deposit Date

Territorial Authorities

Waimakariri District

Comprised In

CT 27959
CT 27958
CT 27957
CT 612208

Created Parcels

Parcels	Parcel Intent	Area	CT Reference
Lot 7009 Deposited Plan 466640	Fee Simple Title	0.1741 Ha	629940
Lot 7008 Deposited Plan 466640	Fee Simple Title	0.1661 Ha	629942
Area LI Deposited Plan 466640	Easement		
Area LU Deposited Plan 466640	Easement		
Lot 3020 Deposited Plan 466640	Vesting on Deposit for Road	0.0016 Ha	
Area KE Deposited Plan 466640	Easement		
Area KF Deposited Plan 466640	Easement		
Area KG Deposited Plan 466640	Easement		
Area KH Deposited Plan 466640	Easement		
Area KI Deposited Plan 466640	Easement		
Area LQ Deposited Plan 466640	Easement		



Title Plan - LT 466640

Created Parcels

Parcels	Parcel Intent	Area	CT Reference
Area LR Deposited Plan 466640	Easement		
Area LS Deposited Plan 466640	Easement		
Area KO Deposited Plan 466640	Easement		
Area Q Deposited Plan 466640	Easement		
Area R Deposited Plan 466640	Easement		
Area S Deposited Plan 466640	Easement		
Area LH Deposited Plan 466640	Easement		
Area LB Deposited Plan 466640	Easement		
Area KU Deposited Plan 466640	Easement		
Area KN Deposited Plan 466640	Easement		
Area KM Deposited Plan 466640	Easement		
Area KT Deposited Plan 466640	Easement		
Area LA Deposited Plan 466640	Easement		
Area LG Deposited Plan 466640	Easement		
Area A Deposited Plan 466640	Easement		
Area B Deposited Plan 466640	Easement		
Area C Deposited Plan 466640	Easement		
Area D Deposited Plan 466640	Easement		
Area E Deposited Plan 466640	Easement		
Area KL Deposited Plan 466640	Easement		
Area F Deposited Plan 466640	Easement		
Area J Deposited Plan 466640	Easement		
Area K Deposited Plan 466640	Easement		
Area L Deposited Plan 466640	Easement		
Area M Deposited Plan 466640	Easement		
Area N Deposited Plan 466640	Easement		
Area LY Deposited Plan 466640	Easement		
Area LX Deposited Plan 466640	Easement		
Area O Deposited Plan 466640	Easement		
Area P Deposited Plan 466640	Easement		
Area CC Deposited Plan 466640	Easement		
Area DD Deposited Plan 466640	Easement		
Area EE Deposited Plan 466640	Easement		
Area FF Deposited Plan 466640	Easement		
Area GG Deposited Plan 466640	Easement		
Area HH Deposited Plan 466640	Easement		
Area JJ Deposited Plan 466640	Easement		
Lot 3003 Deposited Plan 466640	Vesting on Deposit for Road	2.1720 Ha	



Title Plan - LT 466640

Created Parcels

Parcels	Parcel Intent	Area	CT Reference
Lot 2006 Deposited Plan 466640	Fee Simple Title	0.8409 Ha	629943
Lot 7011 Deposited Plan 466640	Fee Simple Title	0.1500 Ha	629944
Lot 7010 Deposited Plan 466640	Fee Simple Title	0.2133 Ha	629945
Lot 2005 Deposited Plan 466640	Fee Simple Title	0.3157 Ha	629946
Lot 5007 Deposited Plan 466640	Vesting on Deposit for Recreation Reserve (Territorial Authority)	0.1458 Ha	629947
Area KS Deposited Plan 466640	Easement		
Lot 216 Deposited Plan 466640	Fee Simple Title	0.0400 Ha	629832
Lot 217 Deposited Plan 466640	Fee Simple Title	0.0375 Ha	629833
Lot 218 Deposited Plan 466640	Fee Simple Title	0.0394 Ha	629834
Lot 219 Deposited Plan 466640	Fee Simple Title	0.0399 Ha	629835
Lot 220 Deposited Plan 466640	Fee Simple Title	0.0444 Ha	629836
Lot 221 Deposited Plan 466640	Fee Simple Title	0.0384 Ha	629837
Lot 222 Deposited Plan 466640	Fee Simple Title	0.0300 Ha	629838
Lot 223 Deposited Plan 466640	Fee Simple Title	0.0330 Ha	629839
Lot 224 Deposited Plan 466640	Fee Simple Title	0.0300 Ha	629840
Lot 225 Deposited Plan 466640	Fee Simple Title	0.0300 Ha	629841
Lot 226 Deposited Plan 466640	Fee Simple Title	0.0320 Ha	629842
Lot 227 Deposited Plan 466640	Fee Simple Title	0.0338 Ha	629843
Lot 228 Deposited Plan 466640	Fee Simple Title	0.0300 Ha	629844
Lot 229 Deposited Plan 466640	Fee Simple Title	0.0300 Ha	629845
Lot 230 Deposited Plan 466640	Fee Simple Title	0.0405 Ha	629846
Lot 231 Deposited Plan 466640	Fee Simple Title	0.0375 Ha	629847
Lot 232 Deposited Plan 466640	Fee Simple Title	0.0420 Ha	629848
Lot 233 Deposited Plan 466640	Fee Simple Title	0.0385 Ha	629849
Lot 234 Deposited Plan 466640	Fee Simple Title	0.0350 Ha	629850
Lot 235 Deposited Plan 466640	Fee Simple Title	0.0310 Ha	629851
Lot 236 Deposited Plan 466640	Fee Simple Title	0.0310 Ha	629852
Lot 237 Deposited Plan 466640	Fee Simple Title	0.0330 Ha	629853
Lot 238 Deposited Plan 466640	Fee Simple Title	0.0330 Ha	629854
Lot 239 Deposited Plan 466640	Fee Simple Title	0.0330 Ha	629855
Lot 240 Deposited Plan 466640	Fee Simple Title	0.0350 Ha	629856
Lot 241 Deposited Plan 466640	Fee Simple Title	0.0325 Ha	629857
Area KW Deposited Plan 466640	Easement		
Area KZ Deposited Plan 466640	Easement		
Lot 242 Deposited Plan 466640	Fee Simple Title	0.0395 Ha	629858
Lot 243 Deposited Plan 466640	Fee Simple Title	0.0358 Ha	629859
Lot 244 Deposited Plan 466640	Fee Simple Title	0.0324 Ha	629860



Title Plan - LT 466640

Created Parcels

Parcels	Parcel Intent	Area	CT Reference
Lot 245 Deposited Plan 466640	Fee Simple Title	0.0331 Ha	629861
Lot 257 Deposited Plan 466640	Fee Simple Title	0.0312 Ha	629862
Area LL Deposited Plan 466640	Easement		
Lot 3024 Deposited Plan 466640	Fee Simple Title	0.0002 Ha	634372
Area KV Deposited Plan 466640	Easement		
Area LC Deposited Plan 466640	Easement		
Area KK Deposited Plan 466640	Easement		
Lot 258 Deposited Plan 466640	Fee Simple Title	0.0420 Ha	629863
Area KR Deposited Plan 466640	Easement		
Lot 259 Deposited Plan 466640	Fee Simple Title	0.0400 Ha	629864
Area KY Deposited Plan 466640	Easement		
Lot 3021 Deposited Plan 466640	Vesting on Deposit for Local Purpose Reserve	0.0186 Ha	634373
Lot 7012 Deposited Plan 466640	Fee Simple Title	0.1648 Ha	634374
Lot 3025 Deposited Plan 466640	Fee Simple Title	0.0002 Ha	634375
Lot 3022 Deposited Plan 466640	Vesting on Deposit for Local Purpose Reserve	0.0067 Ha	634376
Lot 7013 Deposited Plan 466640	Fee Simple Title	0.0468 Ha	634377
Area KJ Deposited Plan 466640	Easement		
Area KQ Deposited Plan 466640	Easement		
Lot 260 Deposited Plan 466640	Fee Simple Title	0.0347 Ha	629865
Lot 261 Deposited Plan 466640	Fee Simple Title	0.0325 Ha	629866
Lot 262 Deposited Plan 466640	Fee Simple Title	0.0338 Ha	629867
Area KX Deposited Plan 466640	Easement		
Area LF Deposited Plan 466640	Easement		
Area LE Deposited Plan 466640	Easement		
Lot 263 Deposited Plan 466640	Fee Simple Title	0.0375 Ha	629868
Lot 264 Deposited Plan 466640	Fee Simple Title	0.0383 Ha	629869
Area KP Deposited Plan 466640	Easement		
Lot 265 Deposited Plan 466640	Fee Simple Title	0.0350 Ha	629870
Lot 266 Deposited Plan 466640	Fee Simple Title	0.0330 Ha	629871
Lot 267 Deposited Plan 466640	Fee Simple Title	0.0300 Ha	629872
Lot 268 Deposited Plan 466640	Fee Simple Title	0.0300 Ha	629873
Lot 269 Deposited Plan 466640	Fee Simple Title	0.0400 Ha	629874
Lot 270 Deposited Plan 466640	Fee Simple Title	0.0345 Ha	629875
Lot 271 Deposited Plan 466640	Fee Simple Title	0.0385 Ha	629876
Lot 272 Deposited Plan 466640	Fee Simple Title	0.0400 Ha	629877
Lot 273 Deposited Plan 466640	Fee Simple Title	0.0379 Ha	629878
Lot 274 Deposited Plan 466640	Fee Simple Title	0.0305 Ha	629879



Title Plan - LT 466640

Created Parcels

Parcels	Parcel Intent	Area	CT Reference
Lot 275 Deposited Plan 466640	Fee Simple Title	0.0305 Ha	629880
Lot 276 Deposited Plan 466640	Fee Simple Title	0.0350 Ha	629881
Lot 277 Deposited Plan 466640	Fee Simple Title	0.0330 Ha	629882
Lot 278 Deposited Plan 466640	Fee Simple Title	0.0375 Ha	629883
Lot 279 Deposited Plan 466640	Fee Simple Title	0.0350 Ha	629884
Lot 280 Deposited Plan 466640	Fee Simple Title	0.0400 Ha	629885
Lot 281 Deposited Plan 466640	Fee Simple Title	0.0330 Ha	629886
Lot 282 Deposited Plan 466640	Fee Simple Title	0.0400 Ha	629887
Lot 283 Deposited Plan 466640	Fee Simple Title	0.0300 Ha	629888
Lot 284 Deposited Plan 466640	Fee Simple Title	0.0300 Ha	629889
Lot 285 Deposited Plan 466640	Fee Simple Title	0.0330 Ha	629890
Lot 286 Deposited Plan 466640	Fee Simple Title	0.0350 Ha	629891
Lot 287 Deposited Plan 466640	Fee Simple Title	0.0383 Ha	629892
Lot 288 Deposited Plan 466640	Fee Simple Title	0.0383 Ha	629893
Lot 289 Deposited Plan 466640	Fee Simple Title	0.0330 Ha	629894
Lot 290 Deposited Plan 466640	Fee Simple Title	0.0330 Ha	629895
Lot 291 Deposited Plan 466640	Fee Simple Title	0.0350 Ha	629896
Lot 292 Deposited Plan 466640	Fee Simple Title	0.0410 Ha	629897
Lot 293 Deposited Plan 466640	Fee Simple Title	0.0310 Ha	629898
Lot 294 Deposited Plan 466640	Fee Simple Title	0.0310 Ha	629899
Lot 295 Deposited Plan 466640	Fee Simple Title	0.0370 Ha	629900
Lot 296 Deposited Plan 466640	Fee Simple Title	0.0383 Ha	629901
Lot 297 Deposited Plan 466640	Fee Simple Title	0.0330 Ha	629902
Lot 298 Deposited Plan 466640	Fee Simple Title	0.0330 Ha	629903
Lot 299 Deposited Plan 466640	Fee Simple Title	0.0350 Ha	629904
Lot 300 Deposited Plan 466640	Fee Simple Title	0.0410 Ha	629905
Lot 301 Deposited Plan 466640	Fee Simple Title	0.0310 Ha	629906
Lot 302 Deposited Plan 466640	Fee Simple Title	0.0310 Ha	629907
Lot 303 Deposited Plan 466640	Fee Simple Title	0.0370 Ha	629908
Lot 304 Deposited Plan 466640	Fee Simple Title	0.0400 Ha	629909
Lot 305 Deposited Plan 466640	Fee Simple Title	0.0330 Ha	629910
Lot 306 Deposited Plan 466640	Fee Simple Title	0.0400 Ha	629911
Lot 307 Deposited Plan 466640	Fee Simple Title	0.0300 Ha	629912
Lot 308 Deposited Plan 466640	Fee Simple Title	0.0300 Ha	629913
Lot 309 Deposited Plan 466640	Fee Simple Title	0.0330 Ha	629914
Lot 310 Deposited Plan 466640	Fee Simple Title	0.0350 Ha	629915
Lot 311 Deposited Plan 466640	Fee Simple Title	0.0383 Ha	629916
Lot 691 Deposited Plan 466640	Fee Simple Title	0.0380 Ha	629917
Lot 692 Deposited Plan 466640	Fee Simple Title	0.0435 Ha	629918



Title Plan - LT 466640

Created Parcels

Parcels	Parcel Intent	Area	CT Reference
Lot 693 Deposited Plan 466640	Fee Simple Title	0.0421 Ha	629919
Lot 694 Deposited Plan 466640	Fee Simple Title	0.0400 Ha	629920
Lot 695 Deposited Plan 466640	Fee Simple Title	0.0421 Ha	629921
Lot 696 Deposited Plan 466640	Fee Simple Title	0.0440 Ha	629922
Lot 697 Deposited Plan 466640	Fee Simple Title	0.0300 Ha	629923
Lot 698 Deposited Plan 466640	Fee Simple Title	0.0300 Ha	629924
Lot 699 Deposited Plan 466640	Fee Simple Title	0.0405 Ha	629925
Lot 700 Deposited Plan 466640	Fee Simple Title	0.0429 Ha	629926
Lot 701 Deposited Plan 466640	Fee Simple Title	0.0327 Ha	629927
Lot 709 Deposited Plan 466640	Fee Simple Title	0.0332 Ha	629928
Lot 710 Deposited Plan 466640	Fee Simple Title	0.0332 Ha	629929
Lot 711 Deposited Plan 466640	Fee Simple Title	0.0400 Ha	629930
Lot 3026 Deposited Plan 466640	Fee Simple Title	0.0003 Ha	634378
Lot 3023 Deposited Plan 466640	Vesting on Deposit for Local Purpose Reserve	0.0250 Ha	634379
Lot 7014 Deposited Plan 466640	Fee Simple Title	0.0520 Ha	634380
Lot 712 Deposited Plan 466640	Fee Simple Title	0.0400 Ha	629931
Lot 713 Deposited Plan 466640	Fee Simple Title	0.0450 Ha	629932
Lot 714 Deposited Plan 466640	Fee Simple Title	0.0450 Ha	629933
Lot 715 Deposited Plan 466640	Fee Simple Title	0.0450 Ha	629934
Lot 716 Deposited Plan 466640	Fee Simple Title	0.0474 Ha	629935
Lot 717 Deposited Plan 466640	Fee Simple Title	0.0441 Ha	629936
Lot 718 Deposited Plan 466640	Fee Simple Title	0.0443 Ha	629937
Lot 6005 Deposited Plan 466640	Vesting on Deposit for Local Purpose Reserve	0.0516 Ha	629938
Lot 7007 Deposited Plan 466640	Fee Simple Title	4.7339 Ha	629939
Area LM Deposited Plan 466640	Easement		
Lot 7015 Deposited Plan 466640	Fee Simple Title	0.0860 Ha	635745
Area KA Deposited Plan 466640	Easement		
Area KB Deposited Plan 466640	Easement		
Area KC Deposited Plan 466640	Easement		
Area KD Deposited Plan 466640	Easement		
Area T Deposited Plan 466640	Easement		
Area LP Deposited Plan 466640	Easement		
Area LD Deposited Plan 466640	Easement		
Area LK Deposited Plan 466640	Easement		
Area LO Deposited Plan 466640	Easement		
Area LN Deposited Plan 466640	Easement		



Title Plan - LT 466640

Created Parcels

Parcels	Parcel Intent	Area	CT Reference
Area LJ Deposited Plan 466640	Easement		
Total Area		<u>13.1874 Ha</u>	

Land Registration District

Canterbury

Plan Number

DP 466640

Territorial Authority (the Council)

Waimakariri District



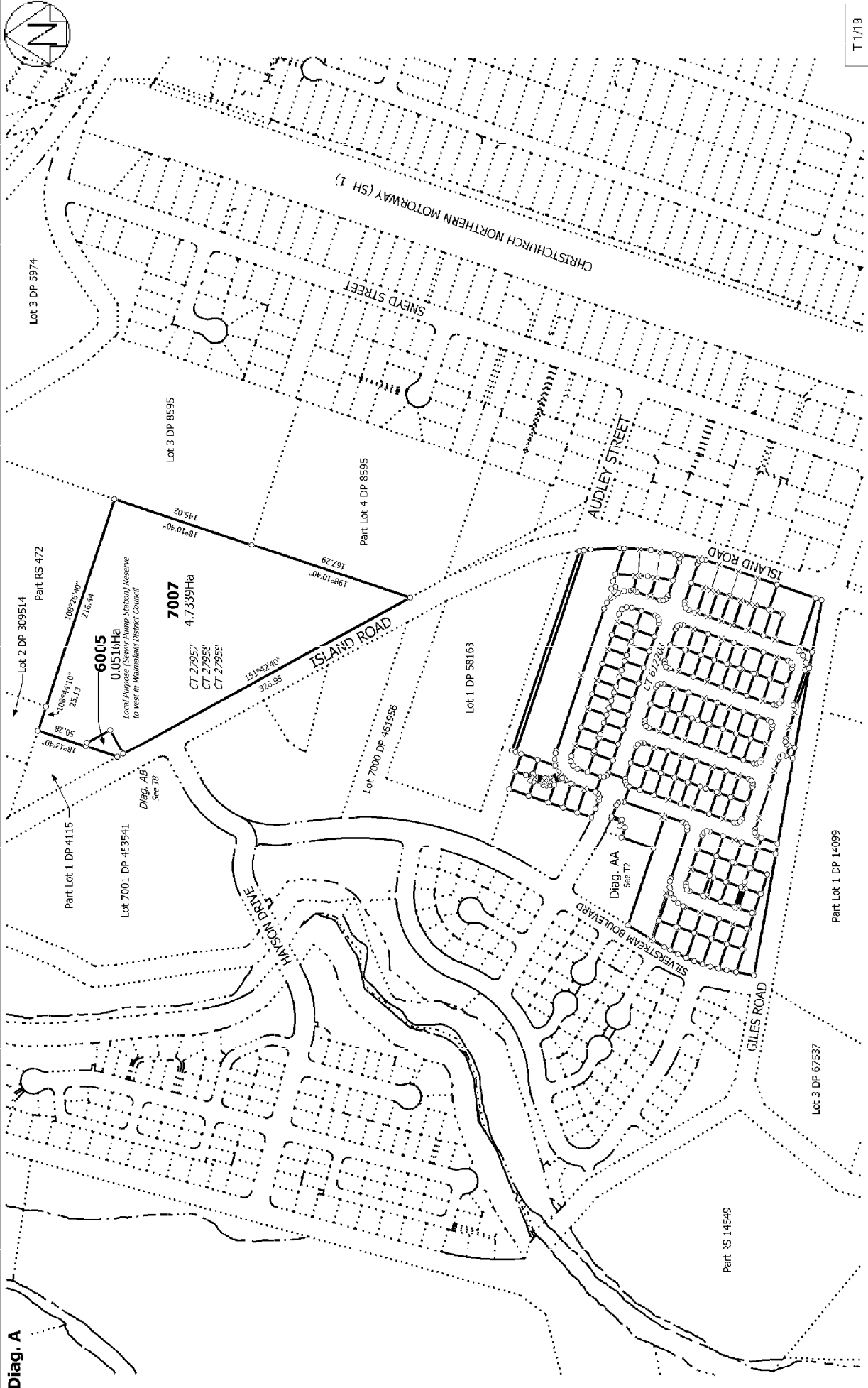
MEMORANDUM OF EASEMENTS			
Purpose	Shown	Servient Tenement	Dominant Tenement
Right of way, right to drain sewage & water, right to convey water, electricity, telecommunications & computer media	A, Q	Lot 219	Lots 220, 221, 222
	B, R	Lot 220	Lots 219, 221, 222
	C, S	Lot 221	Lots 219, 220, 222
	D	Lot 699	Lots 700, Lot 698
	E	Lot 700	Lots 699, Lot 698
Right of way	A	Lot 219	Lot 218
	B	Lot 220	
	C	Lot 221	
	T	Lot 696	Lot 697
Right to drain sewage	J	Lot 259	Area CC
	K	Lot 260	Area DD
	L	Lot 262	Area EE
	M	Lot 263	Area FF
	N, KI	Lot 243	Area GG
	O	Lot 244	Area HH
	P	Lot 245	Area JJ

Memorandum of Easements in Gross (Pursuant to s243 Resource Management Act 1991)			
Purpose	Shown	Servient Tenement	Grantee
Right to convey electricity in gross	F	Lot 2005	Mainpower New Zealand Limited
	KA, LX, LY	Lot 2006	
	KB	Lot 216	
	KC	Lot 232	

Right to convey electricity in gross	KD	Lot 230	Mainpower New Zealand Limited
	KE	Lot 228	
	KF	Lot 226	
	KG	Lot 224	
	KH	Lot 217	
	KI	Lot 243	
	KJ	Lot 296	
	KK	Lot 294	
	KL	Lot 280	
	KM	Lot 278	
	KN	Lot 264	
	KO	Lot 262	
	KP	Lot 308	
	KQ	Lot 298	
	KR	Lot 292	
	KS	Lot 282	
	KT	Lot 276	
	KU	Lot 266	
	KV	Lot 260	
	KW	Lot 306	
	KX	Lot 300	
	KY	Lot 290	
	KZ	Lot 284	
	LA	Lot 274	
	LB	Lot 268	
	LC	Lot 258	
LD	Lot 695		
LE	Lot 304		
LF	Lot 302		
LG	Lot 272		
LH	Lot 270		
LI	Lot 7009		
LJ	Lot 712		

Right to convey electricity in gross	LK	Lot 697	Mainpower New Zealand Limited
	LL	Lot 287	
	LM	Lot 7014	
	LN	Lot 710	
	LO	Lot 701	
	LP	Lot 691	
	LS	7013	
	LQ, LR	7012	
Right to convey telecommunications & computer media in gross	A, Q	Lot 219	Chorus New Zealand Limited
	B, R	Lot 220	
	C, S	Lot 221	
	D	Lot 699	
	E	Lot 700	
	T	Lot 696	

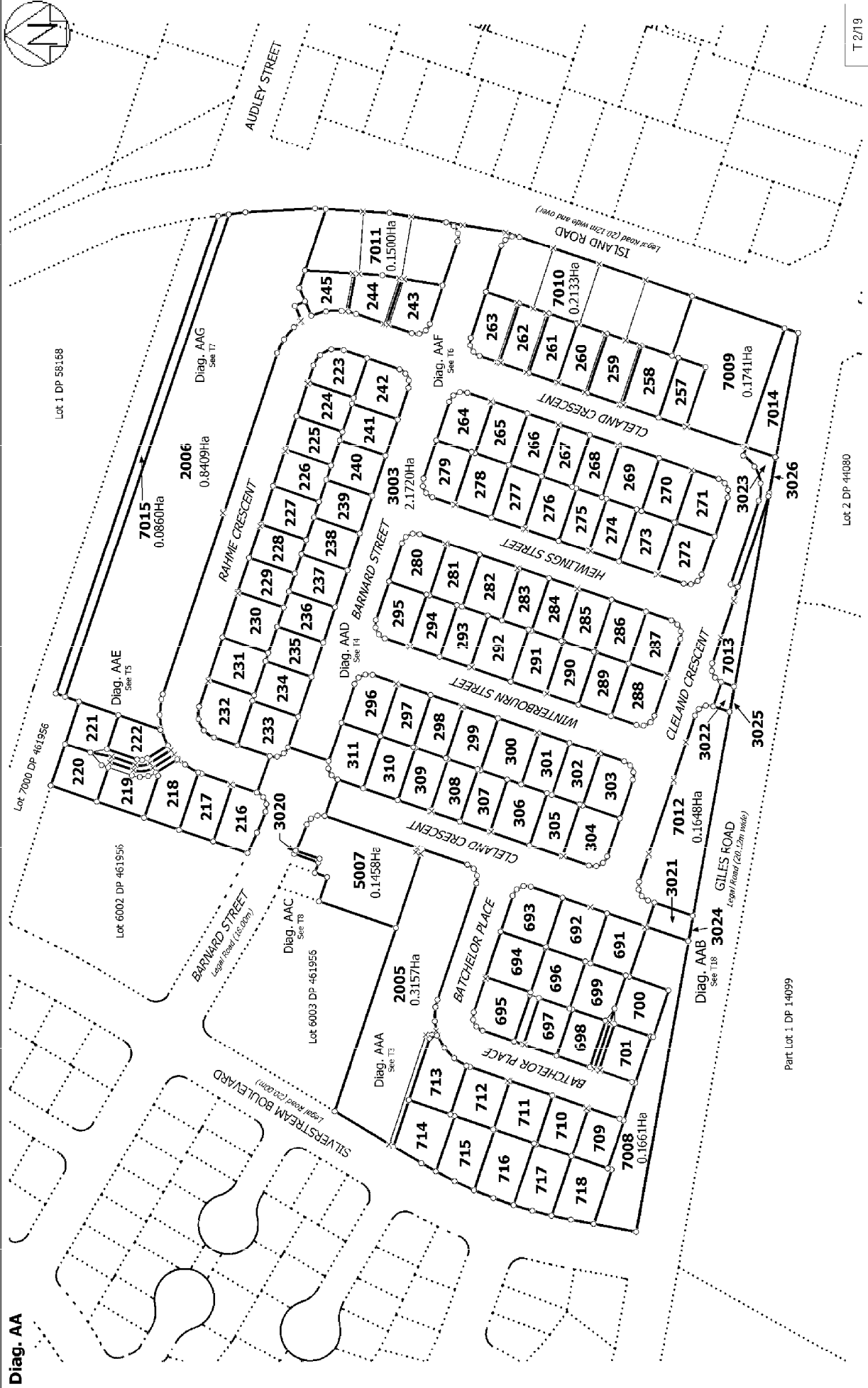
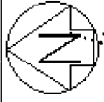
Proposed Easements in Gross			
Purpose	Shown	Servient Tenement	Grantee
Right to convey telecommunications & computer media in gross	LU	Lot 5007	Chorus New Zealand Limited



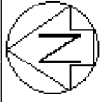
Diag. A

T 1/19

Land District: Canterbury	Lots 216-245, 257-311, 691-701, 709-718, 2005, 2006, 3003, 3020-3026, 5007, 6005, 7007-7015 being a subdivision of Lot 7004 DP 461956 and Lot 2 DP 8595	Title Plan LT 466640
Digitally Generated Plan Generated on: 28/11/2013 4:43pm Page 11 of 20	Surveyor: Russell Thomas Bengie Firm: Davis Ogilvie & Partners Ltd (Christchurch)	



<p>Land District: Canterbury</p>	<p>Surveyor: Russell Thomas Bengie</p>	<p>Title Plan LT 466640</p>
<p>Digitally Generated Plan</p>	<p>Firm: Davis Ogilvie & Partners Ltd (Christchurch)</p>	<p>Part Lot 1 DP 14099</p>
<p>Generated on: 20/11/2013 4:43pm Page 12 of 20</p>	<p>Lots 216-245, 257-311, 691-701, 709-718, 2005, 2006, 3003, 3020-3026, 5007, 6005, 7007-7015 being a subdivision of Lot 7004 DP 461956 and Lot 2 DP 8595</p>	<p>Lot 1 DP 58168</p>



Diag. AAA

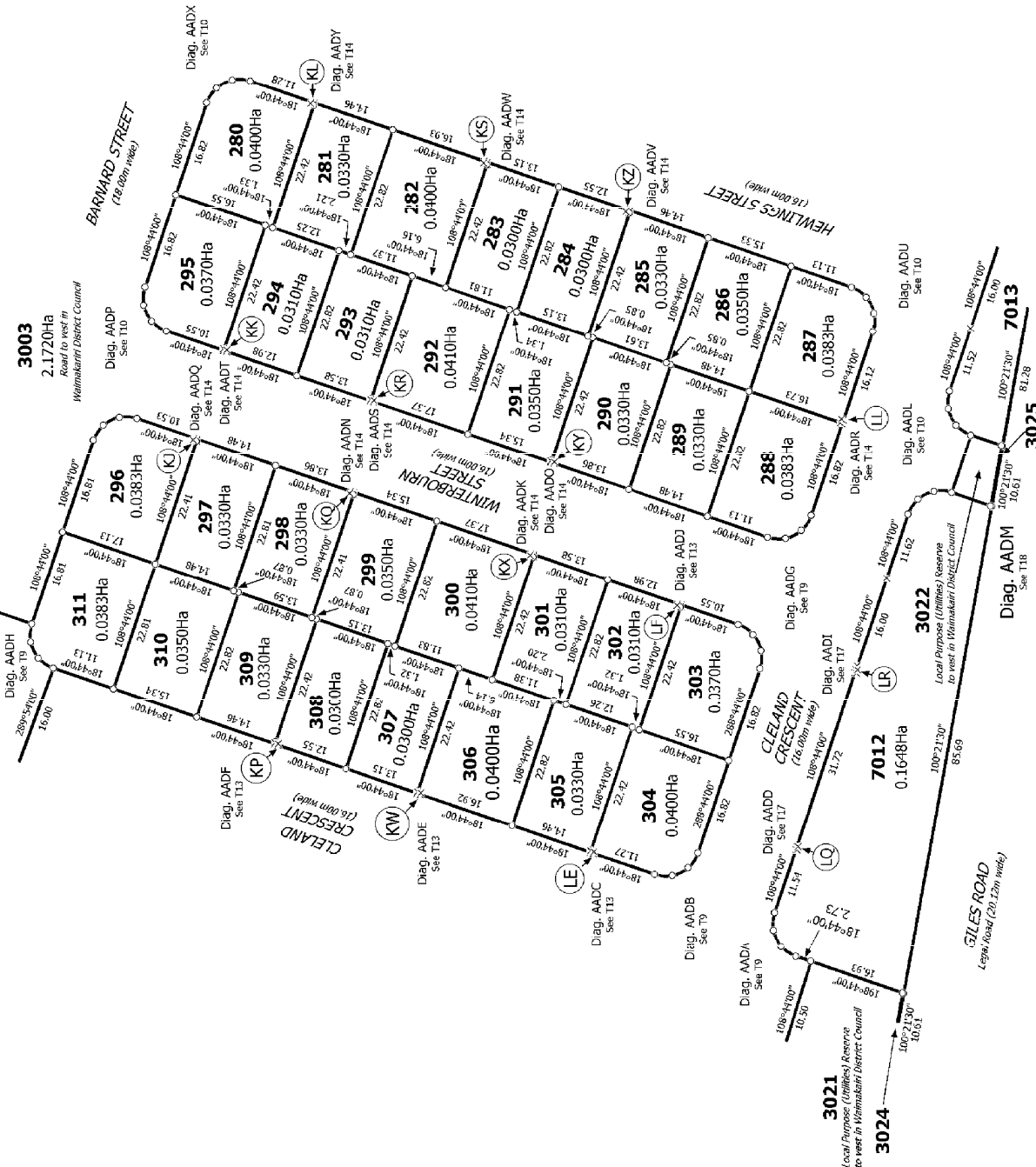
Lot 6003 DP 461956



T 3/19

Land District: Canterbury	Title Plan LT 466640
Lots 216-245, 257-311, 691-701, 709-718, 2005, 2006, 3003, 3020-3026, 5007, 6005, 7007-7015 being a subdivision of Lot 7004 DP 461956 and Lot 2 DP 8595	Surveyor: Russell Thomas Bengie Firm: Davis Ogilvie & Partners Ltd (Christchurch)
Digitally Generated Plan Generated on: 20/11/2013 4:43pm Page 13 of 20	

Diag. AAD



3003
2.1720Ha
Road to west in
Waimakariri District Council

Diag. AADH
See T9

Diag. AADF
See T13

BARWARD STREET
(16.00m wide)

WINTREBOULIN STREET
(16.00m wide)

CLELAND CRESCENT
(26.00m wide)

HEWLINGS STREET
(16.00m wide)

CLELAND CRESCENT
(26.00m wide)

GILES ROAD
Legal Road (26.120m wide)

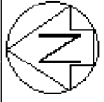
T 4/19

Land District: Canterbury
Digitally Generated Plan
Generated on: 26/11/2013 4:13pm Page 14 of 20

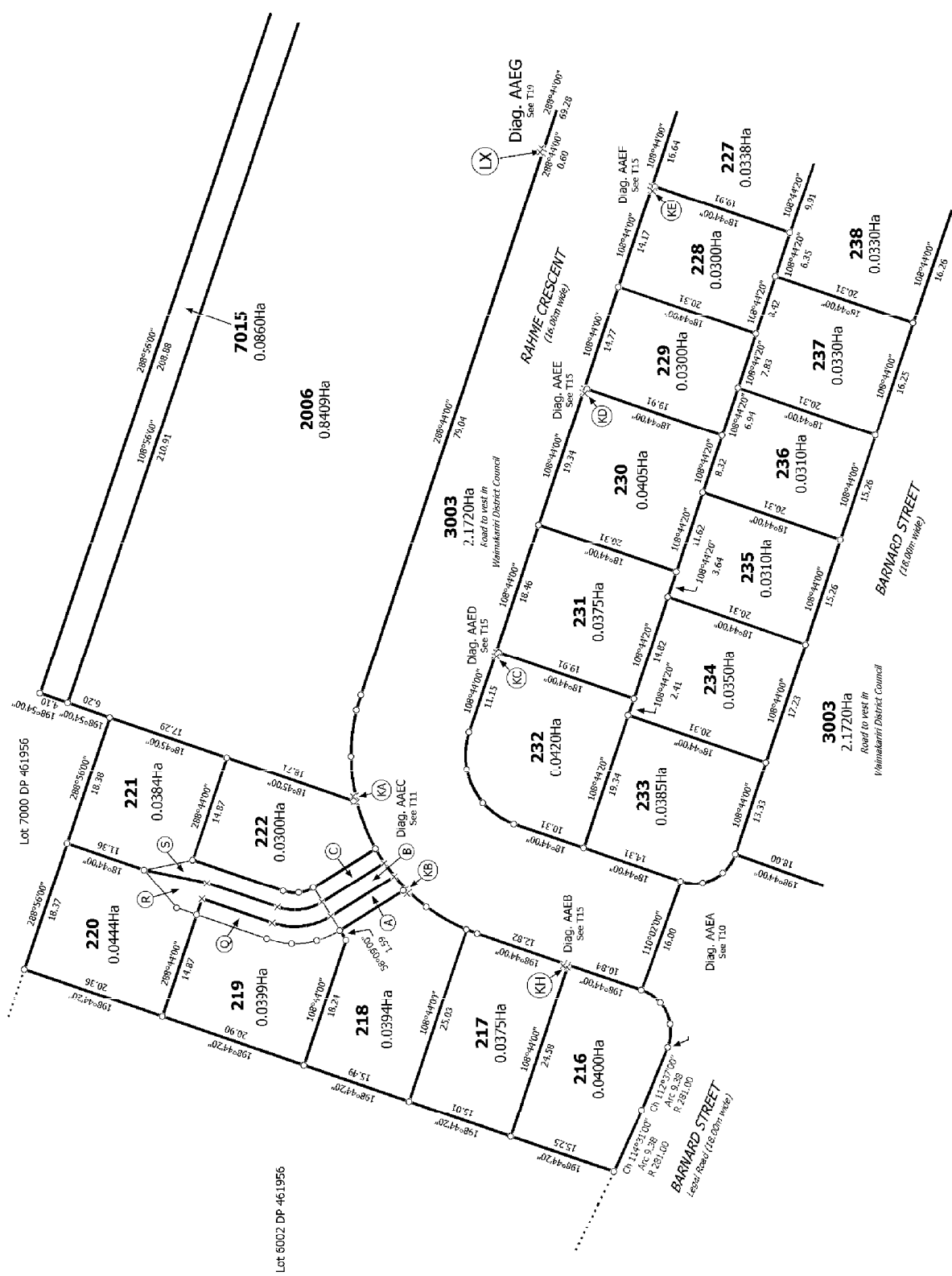
Lots 216-245, 257-311, 691-701, 709-718, 2005, 2006, 3003, 3020-3026, 5007, 6005, 7007-7015 being a subdivision of Lot 7004 DP 461956 and Lot 2 DP 8595

Title Plan
LT 466640

Surveyor: Russell Thomas Benge
Firm: Davis Ogilvie & Partners Ltd (Christch)



Diag. AAE



T 5/19

Land District Canterbury
 Digitally Generated Plan
 Generated on: 20/11/2013 4:13pm Page 15 of 20

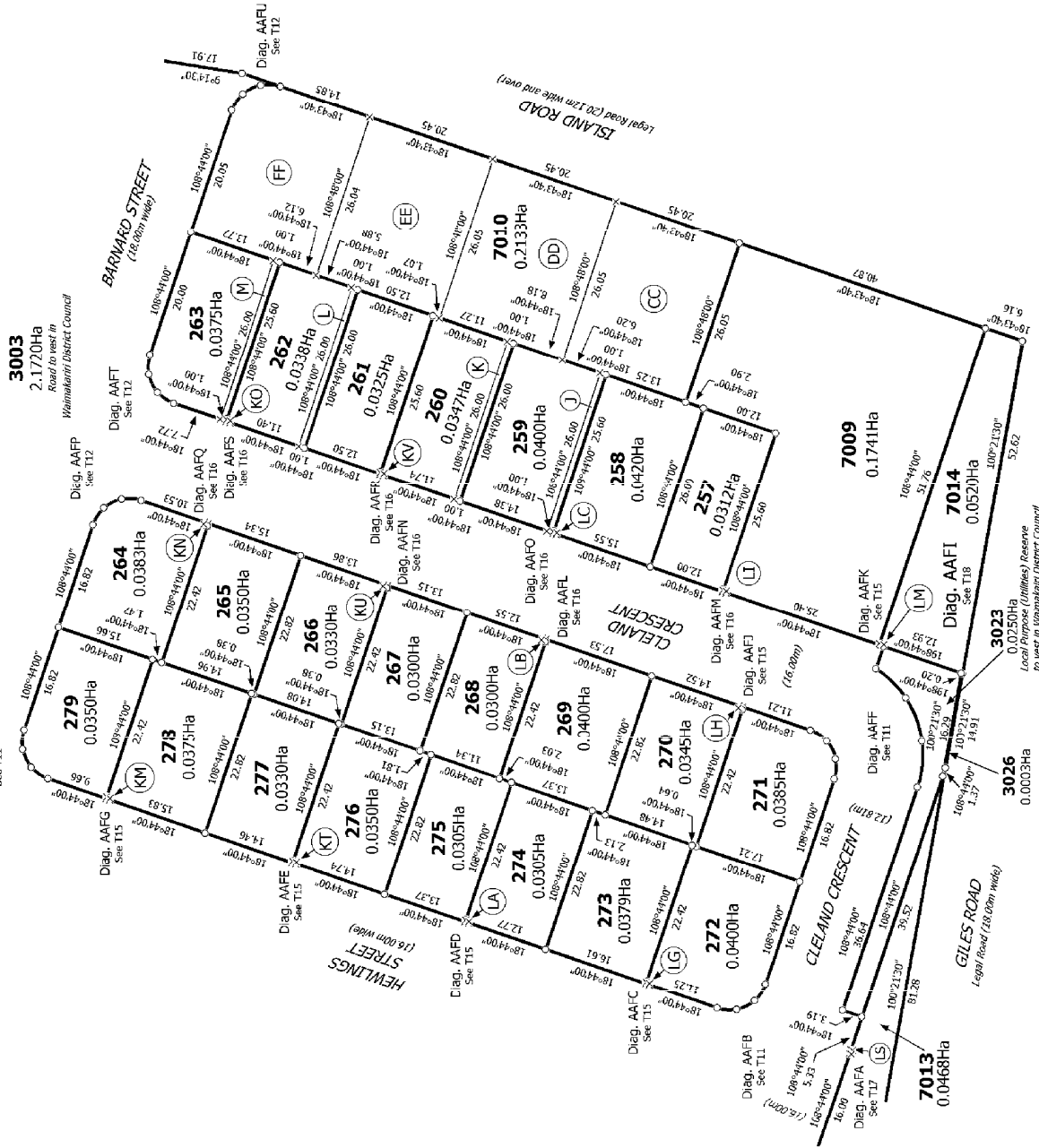
Lots 216-245, 257-311, 691-701, 709-718, 2005, 2006, 3003, 3020-3026, 5007, 6005, 7007-7015 being a subdivision of Lot 7004 DP 461956 and Lot 2 DP 8595

Surveyor: Russell Thomas Bengie
 Firm: Davis Ogilvie & Partners Ltd (Christchurch)

Title Plan
 LT 466640



Diag. AAF



T 6/19

**Title Plan
LT 466640**

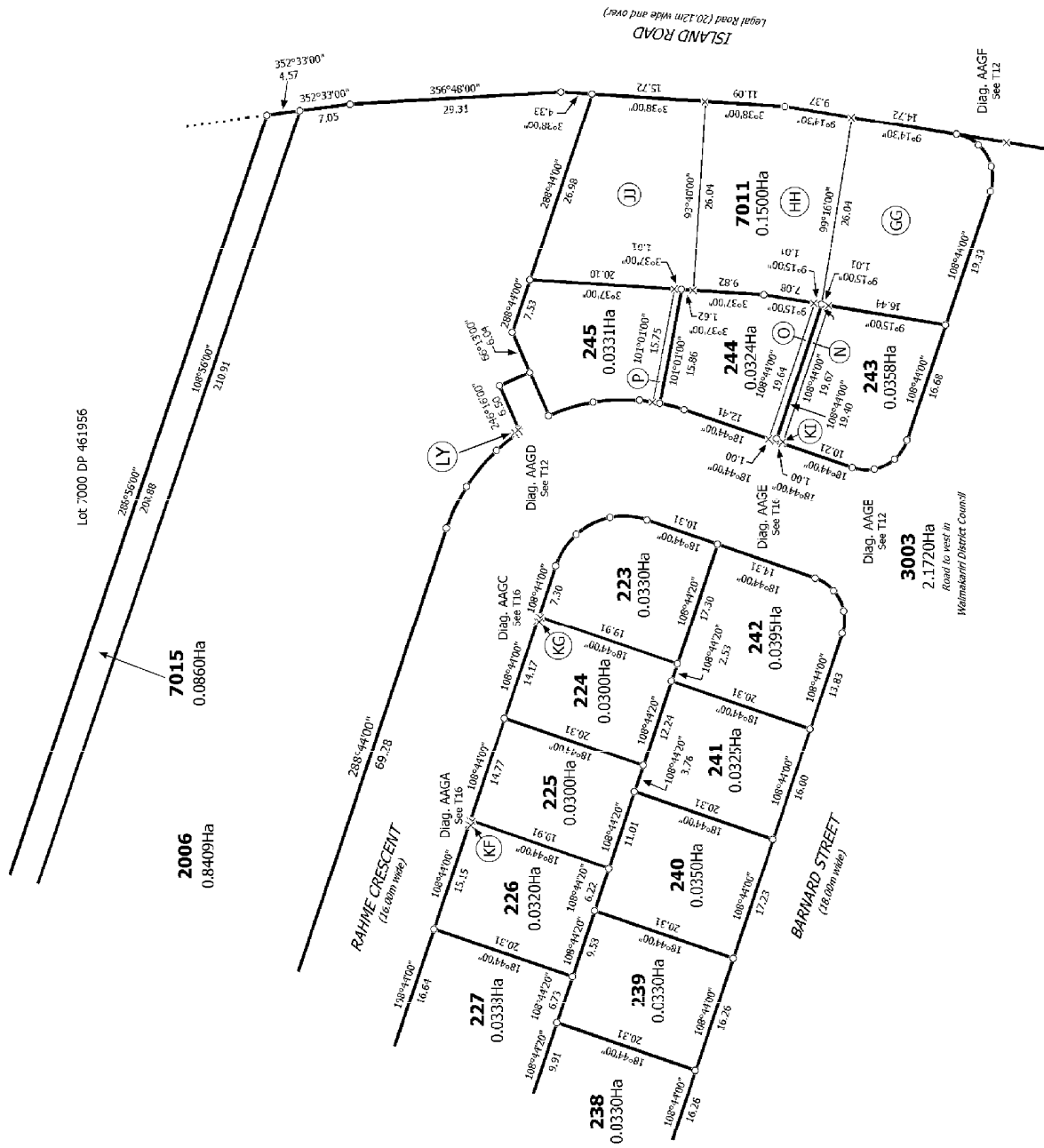
Surveyor: Russell Thomas Bengie
Firm: Davis Ogilvie & Partners Ltd (Christchurch)

Lots 216-245, 257-311, 691-701, 709-718, 2005, 2006, 3003, 3020-3026, 5007, 6005, 7007-7015 being a subdivision of Lot 7004 DP 461956 and Lot 2 DP 8595

Land District: Canterbury
Digitally Generated Plan
Generated on: 28/11/2013 4:13pm Page 16 of 20



Diag. AAG



T 7/19

Land District Canterbury

Digitally Generated Plan

Generated on: 20/11/2013 4:43pm Page 17 of 20

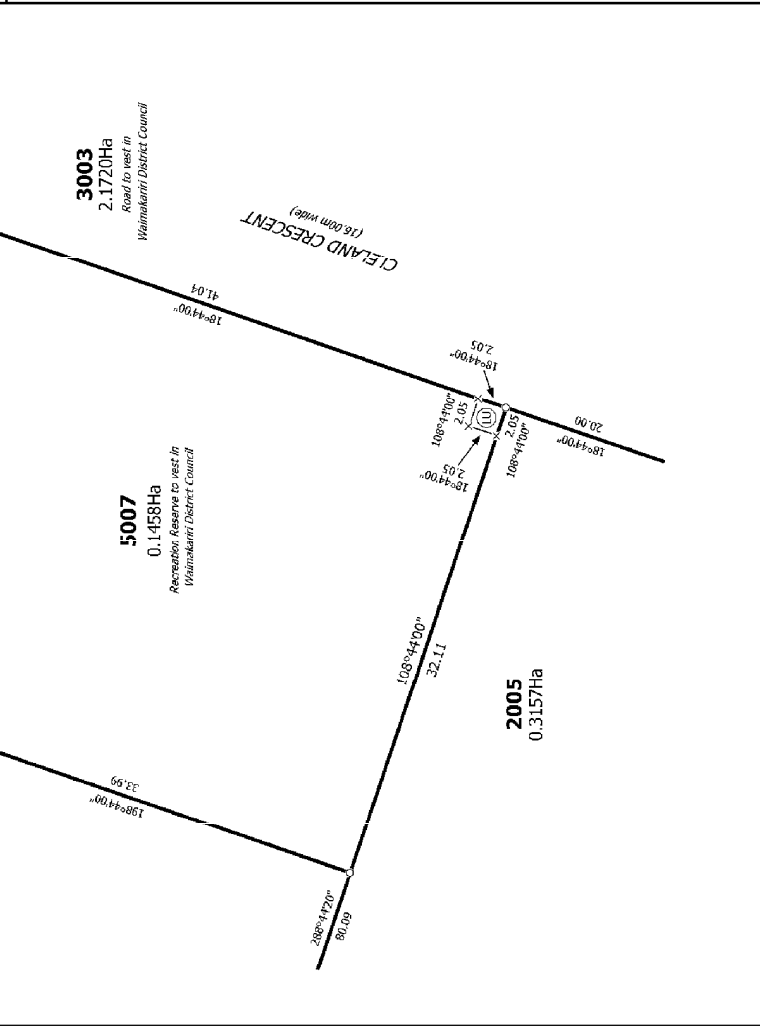
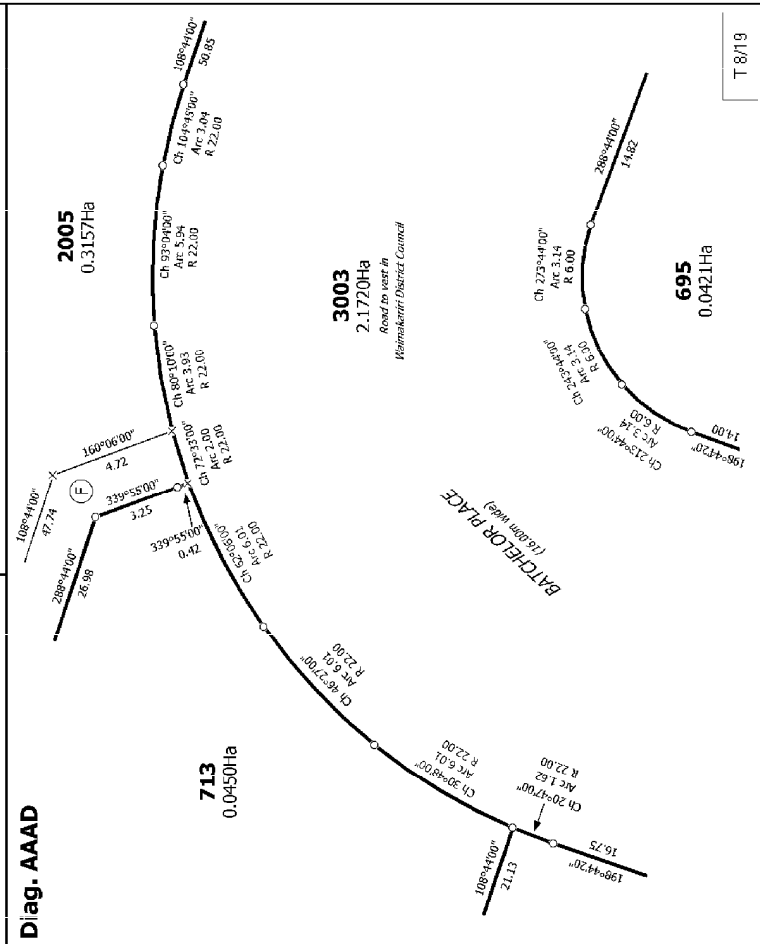
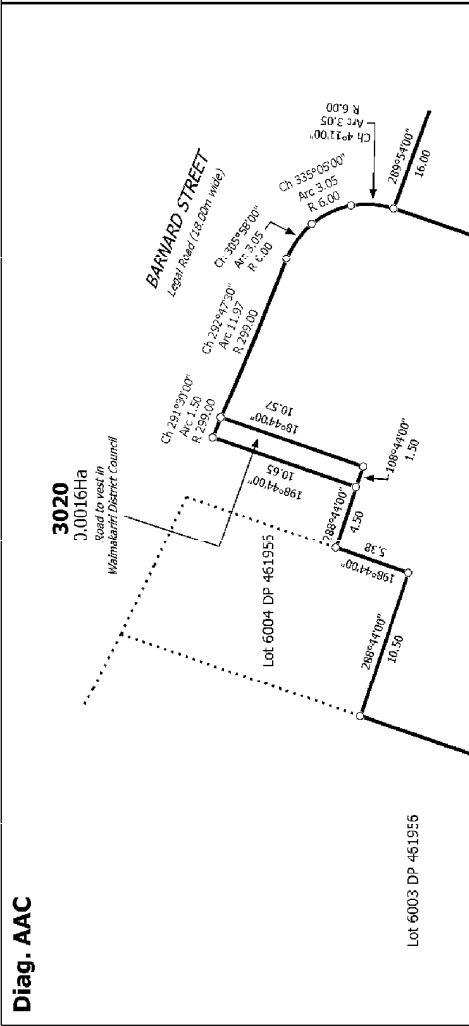
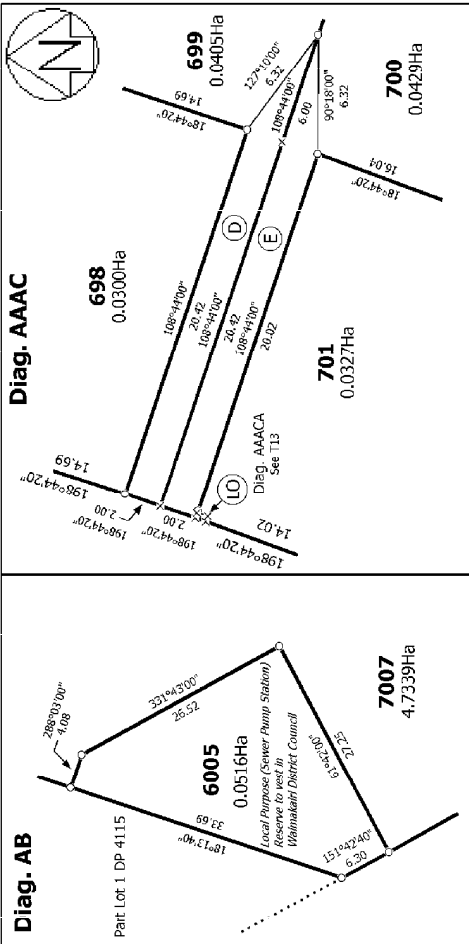
Lots 216-245, 257-311, 691-701, 709-718, 2005, 2006, 3003, 3020-3026, 5007, 6005, 7007-7015 being a subdivision of Lot 7004 DP 461956 and Lot 2 DP 8595

Surveyor: Russell Thomas Bengie

Firm: Davis Ogilvie & Partners Ltd (Christchurch)

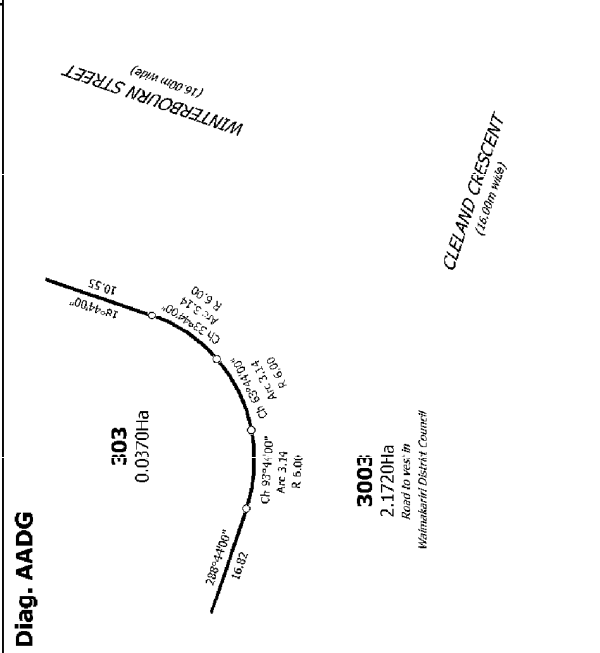
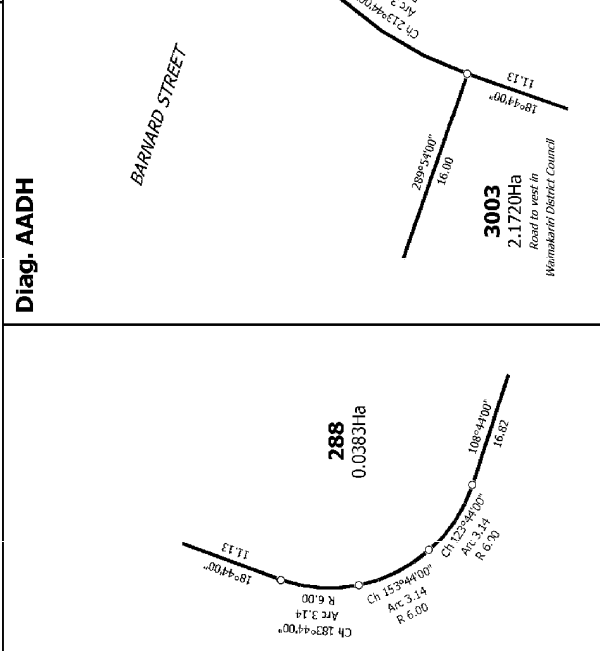
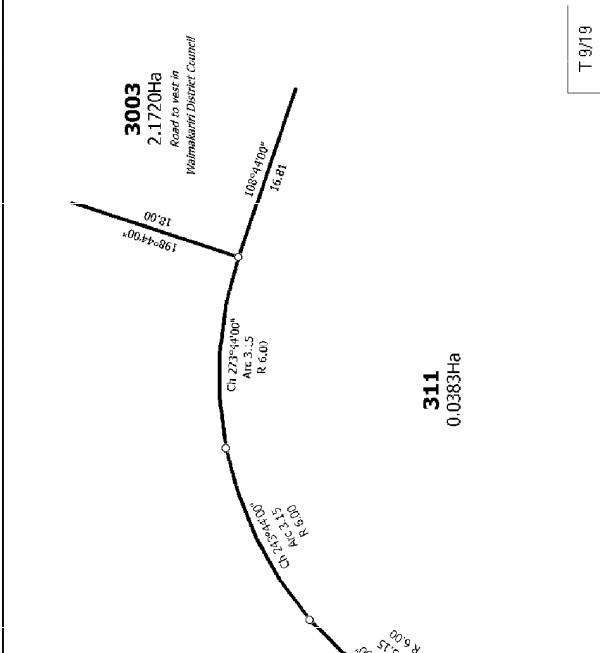
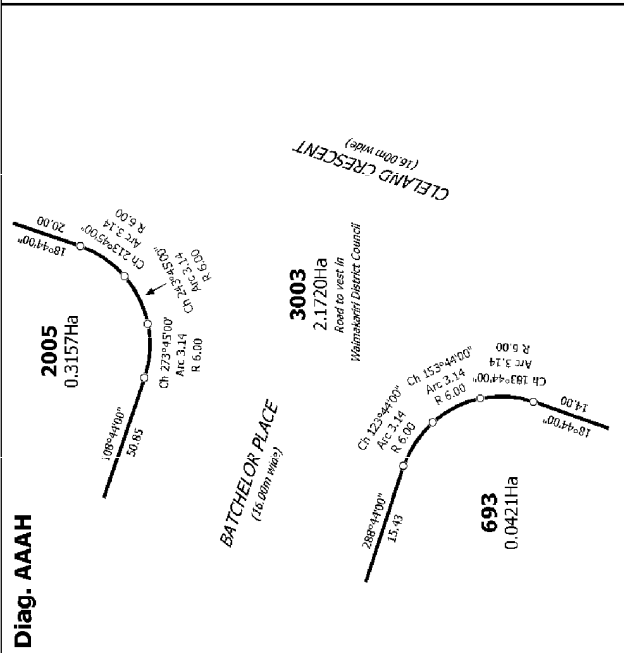
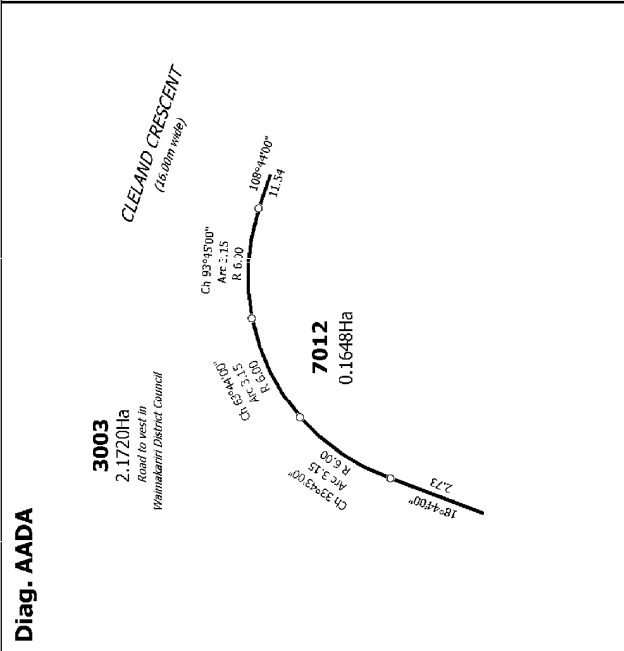
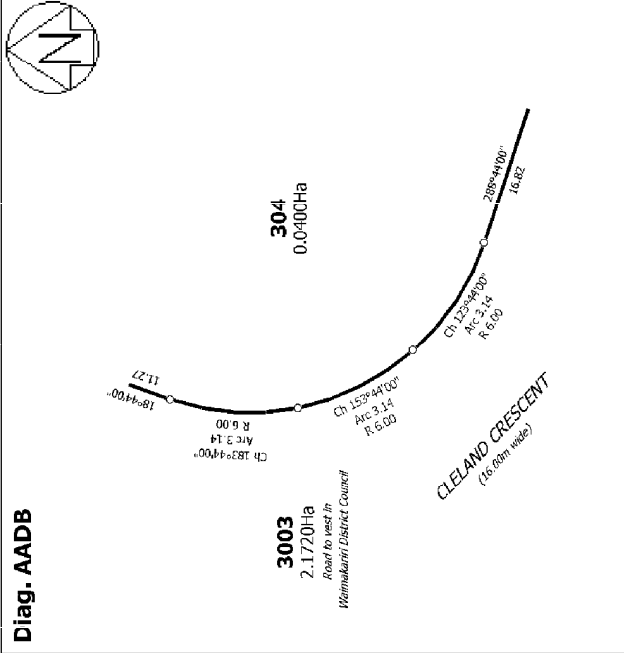
Title Plan

LT 466640

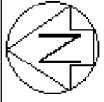


Land District: Canterbury	Surveyor: Russell Thomas Bengie	Title Plan LT 466640
Digitally Generated Plan Generated on: 28/11/2013 4:43pm Page 18 of 20	Firm: Devis Ogilvie & Partners Ltd (Christchurch)	
Lots 216-245, 257-311, 691-701, 709-718, 2005, 2006, 3003, 3020-3026, 5007, 6005, 7007-7015 being a subdivision of Lot 7004 DP 461956 and Lot 2 DP 8595		

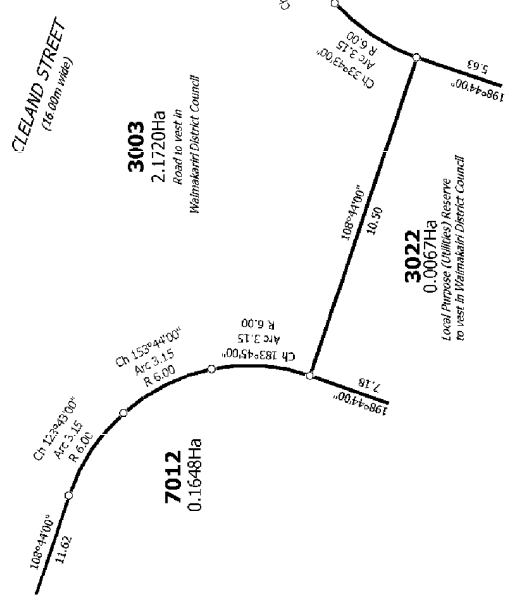
T 8/19



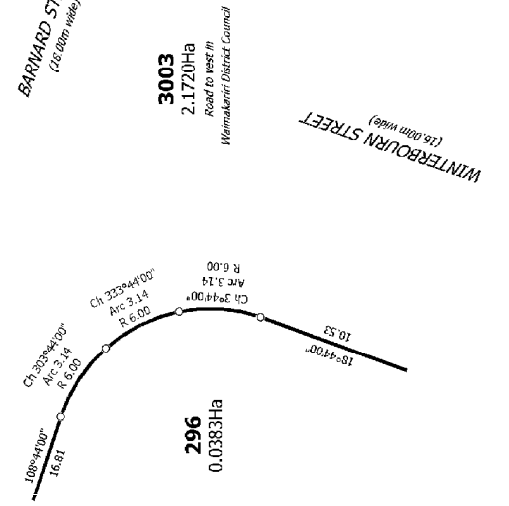
T 9/19	Title Plan LT 466640	Surveyor: Russell Thomas Bengie Firm: Davis Ogilvie & Partners Ltd (Christchurch)	Lots 216-245, 257-311, 691-701, 709-718, 2005, 2006, 3003, 3020-3026, 5007, 6005, 7007-7015 being a subdivision of Lot 7004 DP 461956 and Lot 2 DP 8595
Land District: Canterbury		Digitally Generated Plan Generated on: 26/11/2013 4:43pm Page 19 of 20	



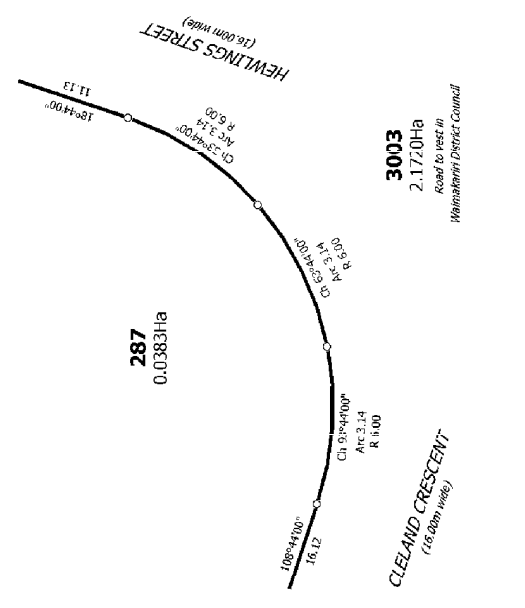
Diag. AADL



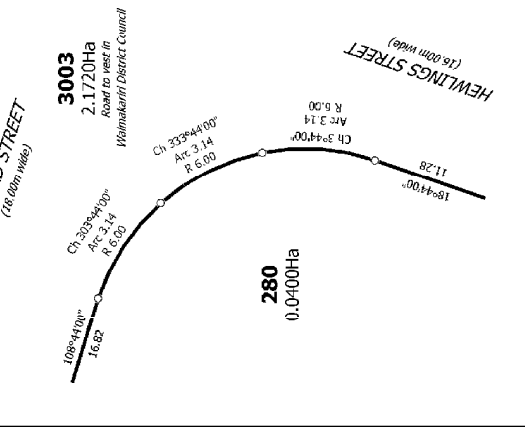
Diag. AADP



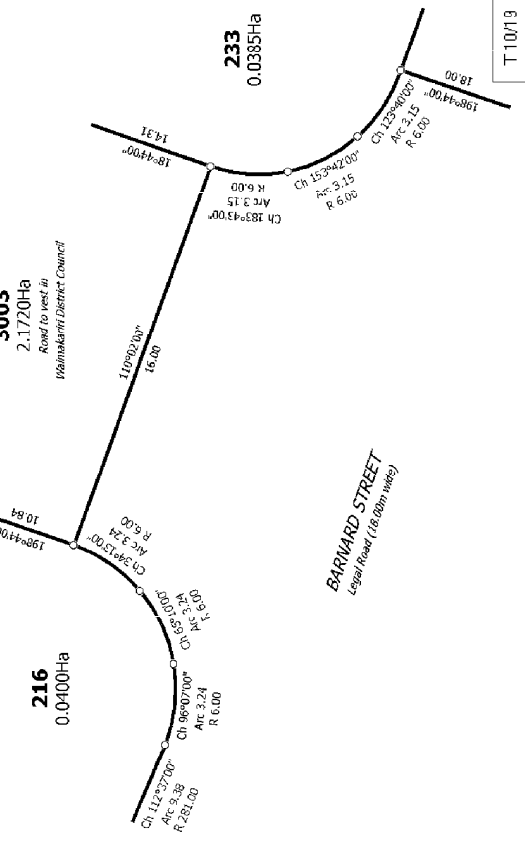
Diag. AADU

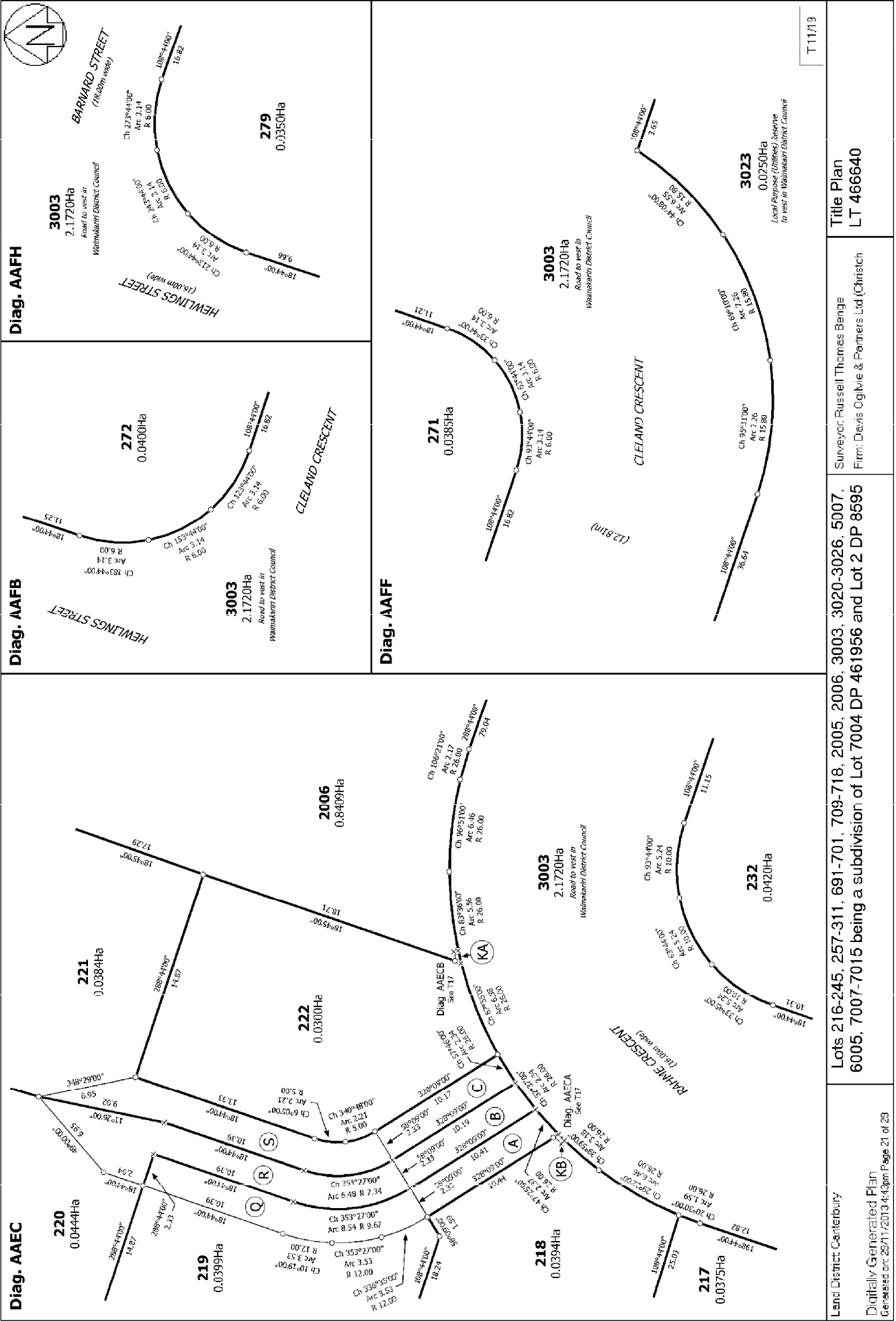


Diag. AADX



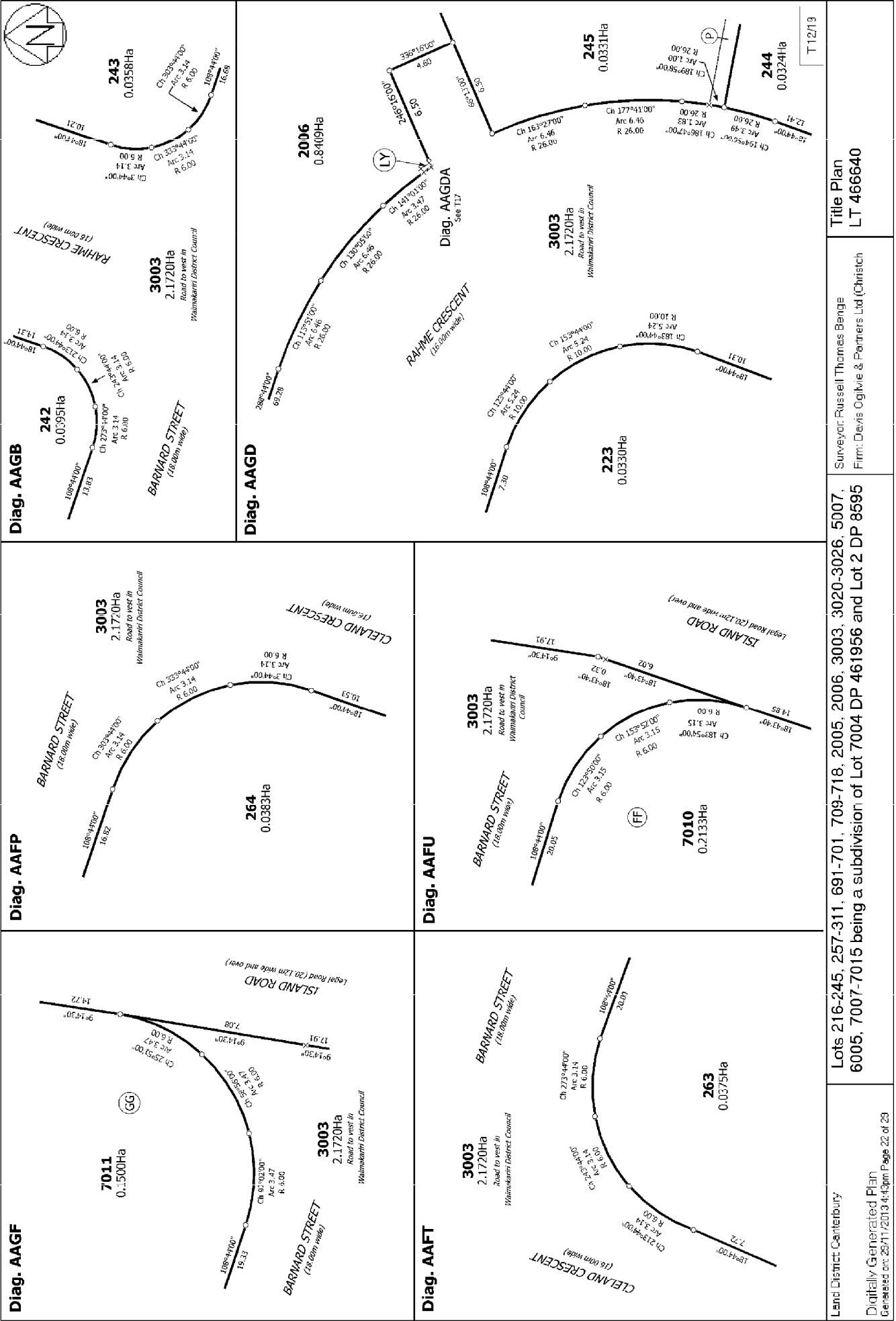
Diag. AAEE



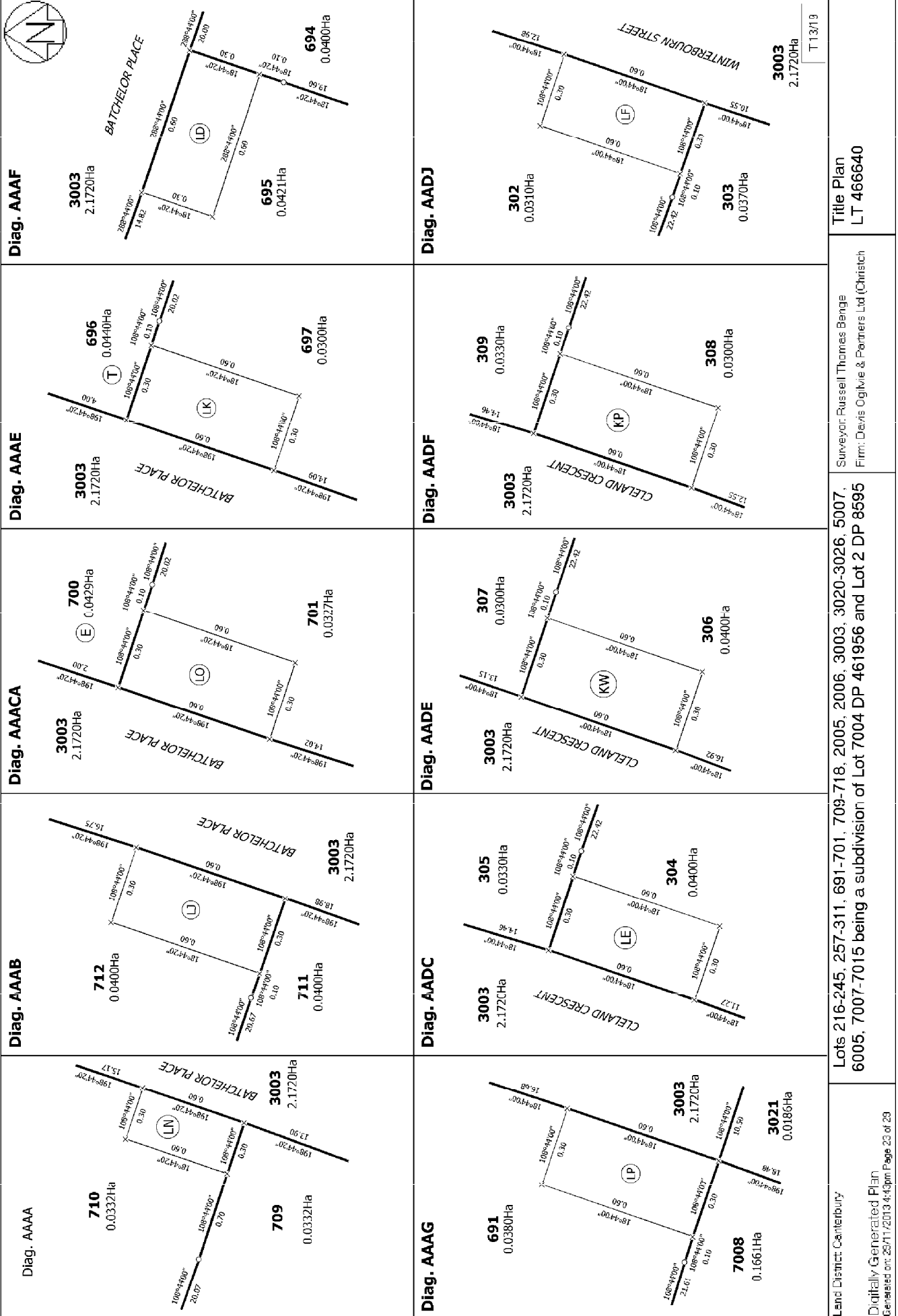


T 11/13

<p>Land District: Canterbury</p> <p>Digitally Generated Plan Generated on: 20/11/2013 4:13pm Page 21 of 20</p>	<p>Lots 216-245, 257-311, 691-701, 709-718, 2005, 2006, 3003, 3020-3026, 5007, 6005, 7007-7015 being a subdivision of Lot 7004 DP 461956 and Lot 2 DP 8595</p>	<p>Surveyor: Russell Thomas Bengel Firm: Davis Ogilvie & Partners Ltd (Christchurch)</p>	<p>Title Plan LT 466640</p>
--	--	--	---------------------------------



Waimakariri District Council



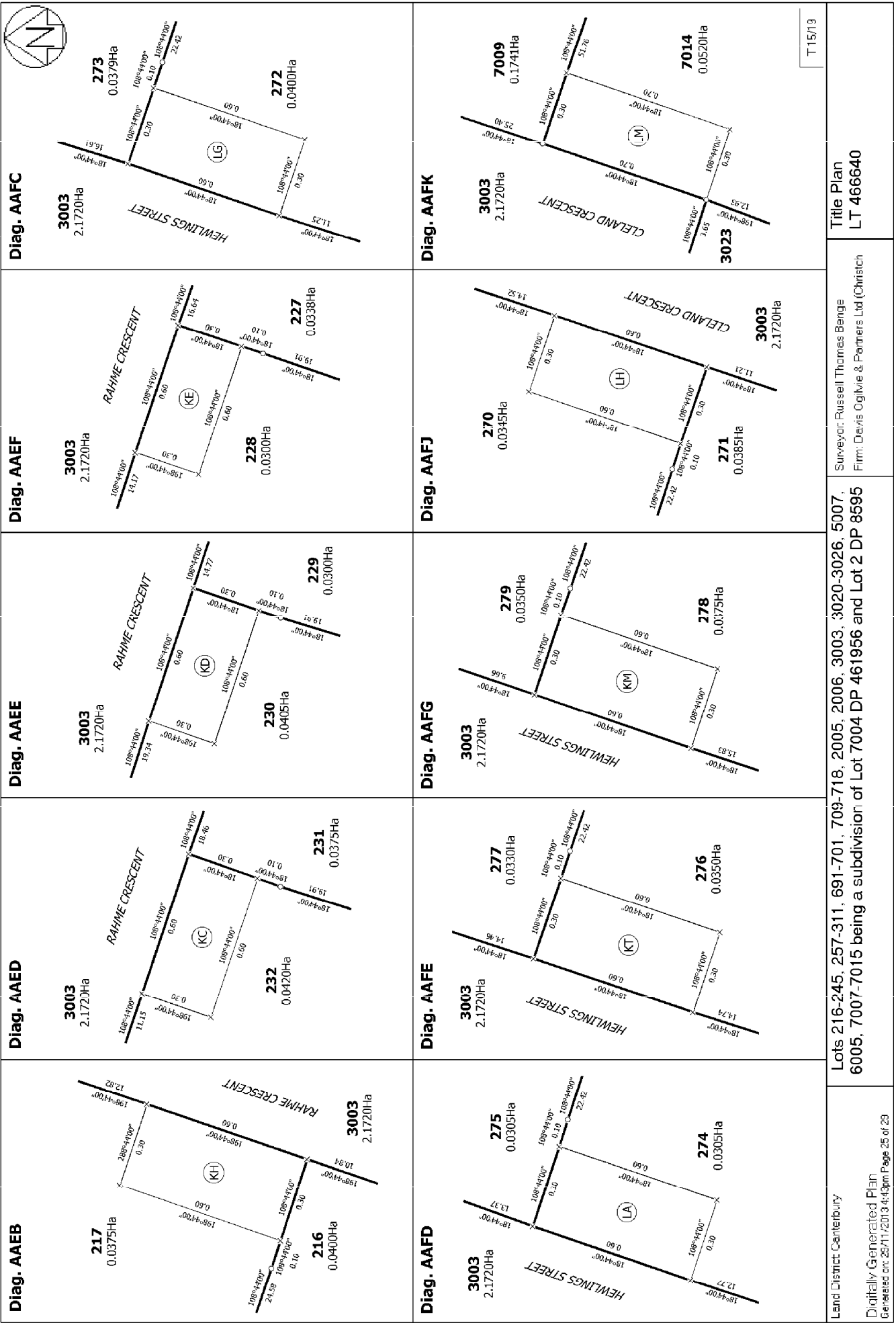
Lots 216-245, 257-311, 691-701, 709-718, 2005, 2006, 3003, 3020-3026, 5007, 6005, 7007-7015 being a subdivision of Lot 7004 DP 461956 and Lot 2 DP 8595

Surveyor: Russell Thomas Bengie
 Firm: Davis Ogilvie & Partners Ltd (Christchurch)

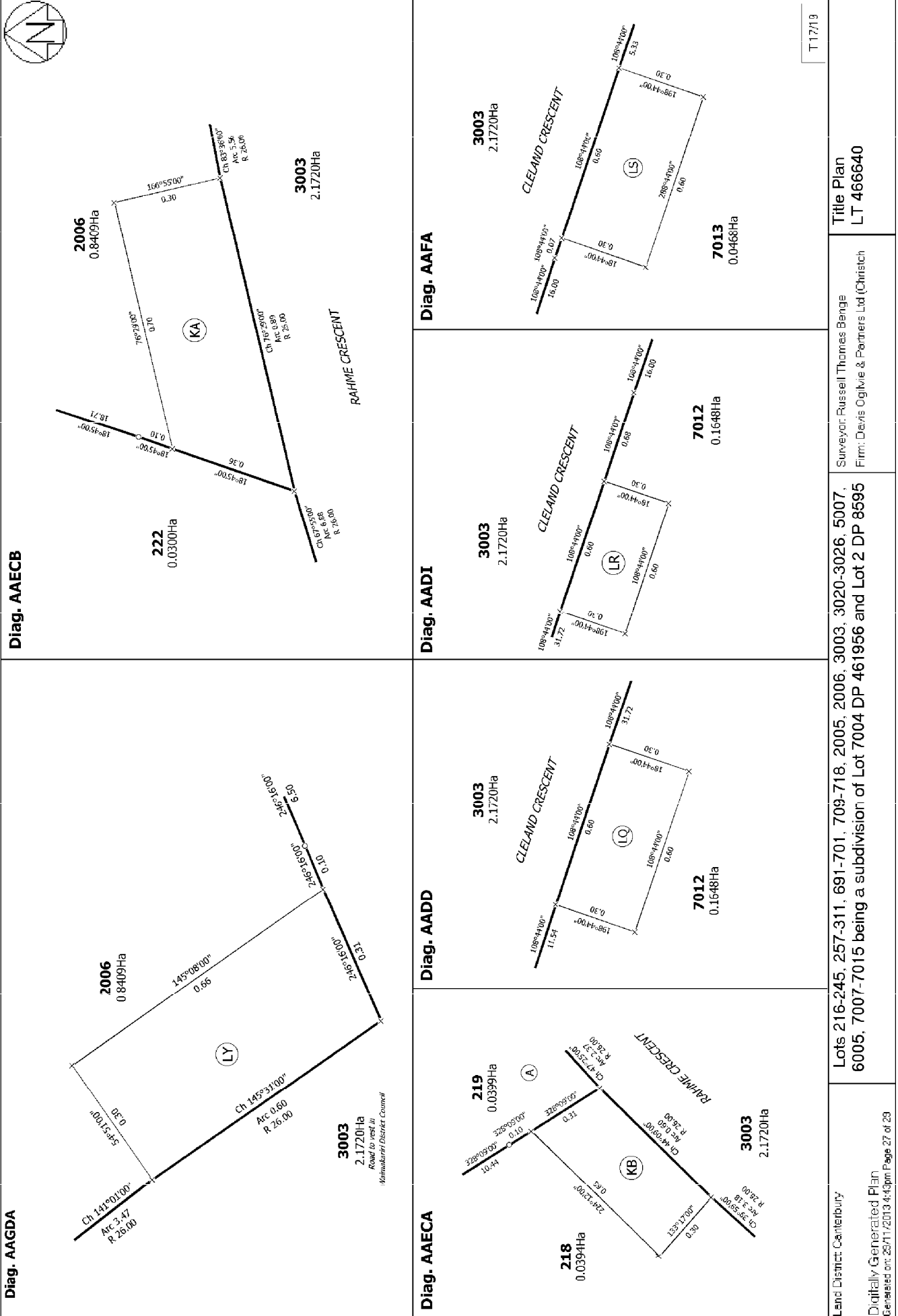
Title Plan
 LT 466640

T 13/19

<p>Diag. AADK</p> <p>300 0.0410Ha</p> <p>301 0.0310Ha</p> <p>3003 2.1720Ha</p>	<p>Diag. AADN</p> <p>298 0.0330Ha</p> <p>299 0.0350Ha</p> <p>3003 2.1720Ha</p>	<p>Diag. AADO</p> <p>291 0.0350Ha</p> <p>290 0.0330Ha</p> <p>3003 2.1720Ha</p>	<p>Diag. AADQ</p> <p>296 0.0383Ha</p> <p>297 0.0330Ha</p> <p>3003 2.1720Ha</p>	<p>Diag. AADR</p> <p>288 0.0383Ha</p> <p>287 0.0383Ha</p> <p>3003 2.1720Ha</p> <p>CLELAND CRESCENT</p>
<p>Diag. AADS</p> <p>293 0.0310Ha</p> <p>292 0.0410Ha</p> <p>3003 2.1720Ha</p>	<p>Diag. AADT</p> <p>295 0.0370Ha</p> <p>294 0.0310Ha</p> <p>3003 2.1720Ha</p>	<p>Diag. AADV</p> <p>284 0.0300Ha</p> <p>285 0.0330Ha</p> <p>3003 2.1720Ha</p>	<p>Diag. AADW</p> <p>282 0.0400Ha</p> <p>283 0.0300Ha</p> <p>3003 2.1720Ha</p>	<p>Diag. AADY</p> <p>280 0.0400Ha</p> <p>281 0.0330Ha</p> <p>3003 2.1720Ha</p>



<p>Diag. AAFI</p> <p>268 0.0300Ha</p> <p>269 0.0400Ha</p> <p>3003 2.1720Ha</p>	<p>Diag. AAFM</p> <p>257 0.0312Ha</p> <p>7009 0.1741Ha</p> <p>3003 2.1720Ha</p>	<p>Diag. AAFN</p> <p>266 0.03330Ha</p> <p>267 0.03000Ha</p> <p>3003 2.1720Ha</p>	<p>Diag. AAFO</p> <p>259 0.0400Ha</p> <p>258 0.0420Ha</p> <p>3003 2.1720Ha</p>	<p>Diag. AAFQ</p> <p>264 0.0383Ha</p> <p>265 0.0350Ha</p> <p>3003 2.1720Ha</p>	
<p>Diag. AAFR</p> <p>261 0.0325Ha</p> <p>260 0.0347Ha</p> <p>3003 2.1720Ha</p>	<p>Diag. AAFS</p> <p>263 0.0375Ha</p> <p>262 0.0338Ha</p> <p>3003 2.1720Ha</p>	<p>Diag. AAGA</p> <p>226 0.0320Ha</p> <p>225 0.0300Ha</p> <p>3003 2.1720Ha</p>	<p>Diag. AAGG</p> <p>224 0.0300Ha</p> <p>223 0.0330Ha</p> <p>3003 2.1720Ha</p>	<p>Diag. AAGE</p> <p>244 0.0324Ha</p> <p>243 0.0358Ha</p> <p>3003 2.1720Ha</p>	
<p>Land District Canterbury</p> <p>Digitally Generated Plan</p> <p>Generated on: 28/11/2013 4:13pm Page 26 of 20</p>		<p>Lots 216-245, 257-311, 691-701, 709-718, 2005, 2006, 3003, 3020-3026, 5007, 6005, 7007-7015 being a subdivision of Lot 7004 DP 461956 and Lot 2 DP 8595</p> <p>Surveyor: Russell Thomas Benge Firm: Davis Ogilvie & Partners Ltd (Christchurch)</p>		<p>Title Plan LT 466640</p>	<p>T 16/19</p>



Diag. AAECB

Diag. AAGDA

Diag. AAFA

Diag. AADI

Diag. AADD

Diag. AAECA

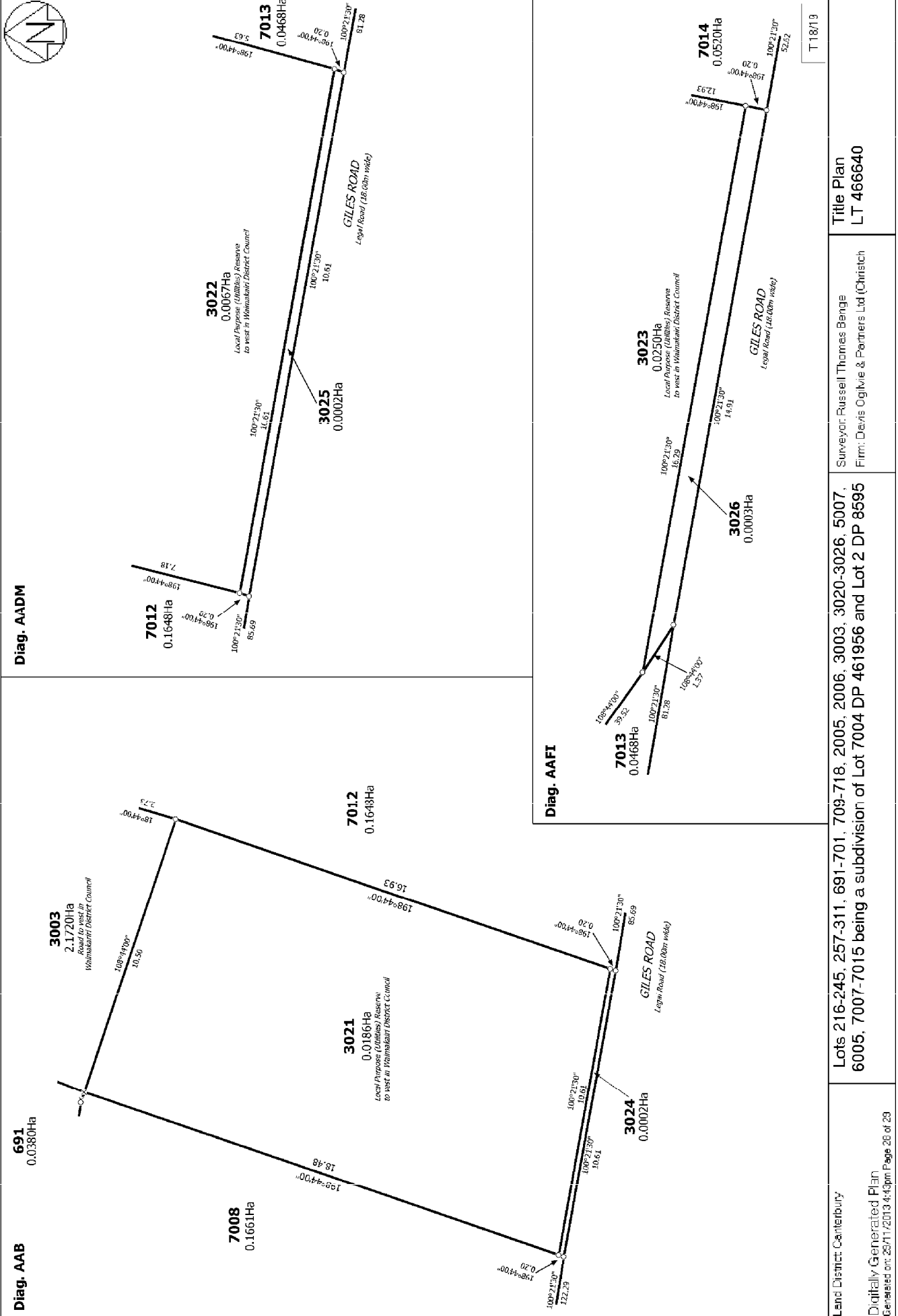
T 17/19

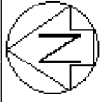
Title Plan
LT 466640

Surveyor: Russell Thomas Bengie
Firm: Davis Ogilvie & Partners Ltd (Christchurch)

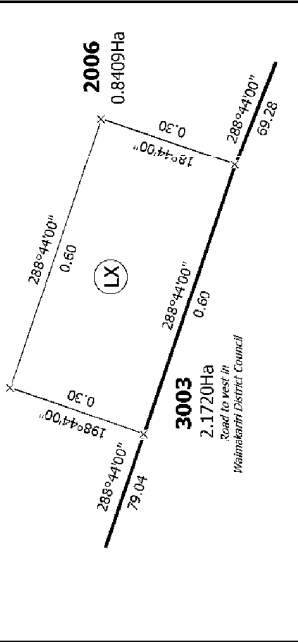
Lots 216-245, 257-311, 691-701, 709-718, 2005, 2006, 3003, 3020-3026, 5007, 6005, 7007-7015 being a subdivision of Lot 7004 DP 461956 and Lot 2 DP 8595

Land District: Canterbury
Digitally Generated Plan
Generated on: 20/11/2013 4:43pm Page 27 of 20





Diag. AAEG



T 19/19

Land District Canterbury

Surveyor: Russell Thomas Bengie
Firm: Davis Ogilvie & Partners Ltd (Christch)

Lots 216-245, 257-311, 691-701, 709-718, 2005, 2006, 3003, 3020-3026, 5007, 6005, 7007-7015 being a subdivision of Lot 7004 DP 461956 and Lot 2 DP 8595

Title Plan
LT 466640

Digitally Generated Plan

Generated on: 26/11/2013 4:43pm Page 20 of 20